

6 Roma Avenue, Mount Pritchard

Stylish Family Living on a Generous 556 sq. m* Parcel

Perfectly positioned in the heart of Mount Pritchard, 6 Roma Avenue presents a beautifully renovated double-storey residence that combines modern comfort with effortless family living on a generous parcel.

From the moment you arrive, the home impresses with its timeless brick facade and well-maintained presence, while inside reveals a thoughtfully updated interior designed for both functionality and style. The modern kitchen sits at the heart of the home, seamlessly connecting to separate living and dining zones that offer space for both relaxed everyday living and entertaining.

Upstairs, the home continues to deliver with spacious bedrooms, complemented by a stylishly renovated bathroom featuring floor-to-ceiling tiles and a luxe bathtub, creating the perfect space to unwind. Plantation shutters throughout enhance both privacy and aesthetic appeal, while split system air conditioning adds comfort.

Step outside to a low-maintenance backyard, ideal for families seeking space without the upkeep.

Positioned within close proximity to local schools, shops and transport, this is a home that delivers on lifestyle, convenience and quality - an ideal opportunity for families, investors or those looking to secure a move-in-ready property in a well-established location.

4 🏠 2 🚿 1 🚗

FOR SALE
Contact Agent

VIEW
Sat 2nd May @ 10:00AM - 10:30AM

AGENTS
Michael Montes de Oca
0419 466 639
michael@ljhunitedgroup.com.au

Tanisha McKenzie
0437 154 019
tanisha@ljhunitedgroup.com.au

AGENCY
LJ Hooker United Group
1800 486 4833

All information contained therein is gathered from relevant third parties sources.
We cannot guarantee or give any warranty about the information provided.
Interested parties must rely solely on their own enquiries.

 **LJ Hooker**

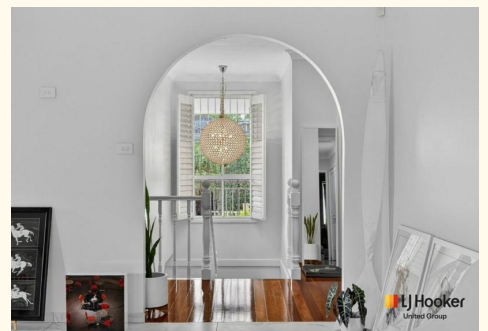
- Approx.
 - ^ Subject to Council Approval.
- Webpage enquiries must include a contact number and email address to receive a response. Photo ID is required for all inspections. While care has been taken in presenting this information, prospective purchasers should confirm details independently.

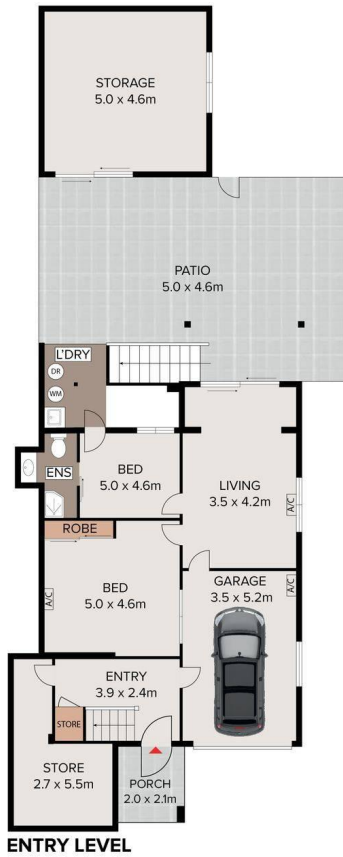
MORE DETAILS

Property ID U5J1T
Property Type House
Land Area 556.4 m2

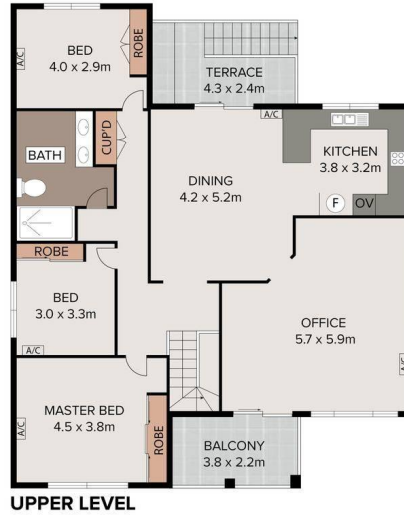
Michael Montes de Oca 0419 466 639
Principal | michael@ljhunitiedgroup.com.au
Tanisha McKenzie 0437 154 019
Sales Executive | tanisha@ljhunitiedgroup.com.au

LJ Hooker United Group 1800 486 4833
41 Wentworth Road, BRINGELLY NSW 2556
unitedgroup.ljhooker.com.au | reception@ljhunitiedgroup.com.au





ENTRY LEVEL



UPPER LEVEL



SITE PLAN

6 Roma Avenue, Mount Pritchard

Disclaimer: Floor plans and site plans are intended as a guide only. They are not part of any legal document or title and are subject to errors, omission, and inaccuracies and should not be used as reference. Sizes and dimensions are approximate only. Interested parties should make their own enquiries. Floor plan by: Flex Media