

## Mount Nelson, 14 Lachlan Drive

The Perfect Family Home or One for the Investment Portfolio

Discover the perfect family haven that offers a spacious blend of comfort, style, and captivating views, making it an ideal choice for families seeking a convenient lifestyle

Close to reputable schools, just 10 minutes to Hobarts CBD, bushwalking tracks nearby and shopping or access to a great beach in Sandy Bay almost on your doorstep, you will love the ease of living in Mt Nelson.

Key Features:

5 Generous Bedrooms: Ample space for the whole family to enjoy privacy and comfort.

2 easy access Bathrooms: Conveniently designed for busy family life.

Air Conditioning: Stay cool during summer and cosy in winter.

Expansive Garden: Perfect for children to play, family gatherings, or to create a productive

5

2

4

**For Sale**  
Please Call

**View**  
[ljhooker.com.au/5X36FCS](http://ljhooker.com.au/5X36FCS)

**Contact**  
**Alison Rogers**  
0409 220 211  
[arogers@ljhookerpinnacle.com](mailto:arogers@ljhookerpinnacle.com)



**Disclaimer:** All information contained therein is gathered from relevant third parties sources. We cannot guarantee or give any warranty about the information provided. Interested parties must rely solely on their own enquiries.

**LJ Hooker Pinnacle Property**  
**(03) 6272 8177**

garden

Stunning Water Views: Enjoy picturesque sunsets and tranquil water scenes from your home.

Breathtaking Mountain Views: Embrace the beauty of nature right from your living room.

Land Area: 669 sqm, providing plenty of room for outdoor activities and potential landscaping.

This home is not just a place to live; it's a place to create lasting memories with your loved ones. Don't miss out on the opportunity to make this beautiful property your family's new home!

For more information or to schedule a viewing, please contact us today!

Digital styling is utilised in this listing to allow an alternative perspective.

The information contained herein has been supplied to us and we have no reason to doubt its accuracy, however, cannot guarantee it. Accordingly, all interested parties should make their own enquiries to verify this information.

## More About this Property

Property ID	5X36FCS
Property Type	House
House Size	158 m <sup>2</sup>
Land Area	669 m <sup>2</sup>
Including	Air Conditioning Toilets (2) Outdoor Entertaining Fully Fenced

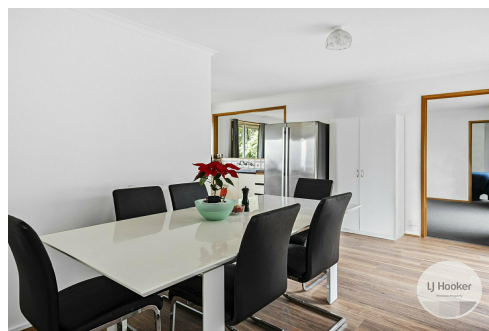
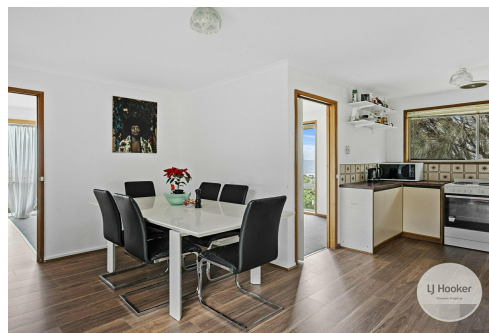
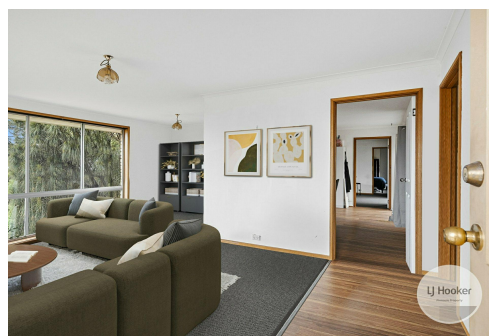
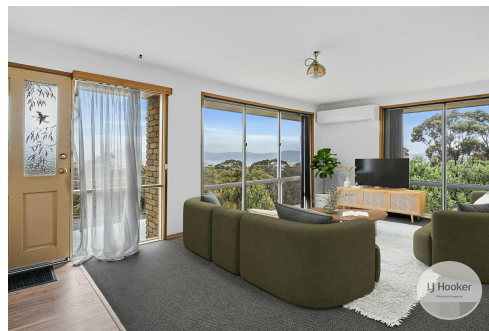
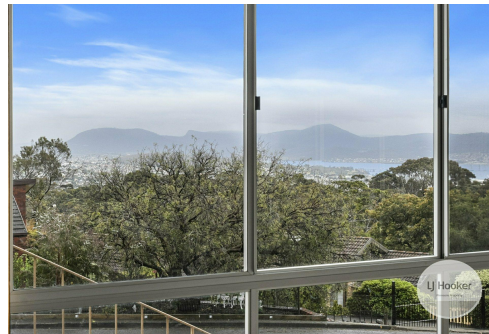
**Alison Rogers 0409 220 211**

Pinnacle Partner | Property Representative | [arogers@ljhookerpinnacle.com](mailto:arogers@ljhookerpinnacle.com)

**LJ Hooker Pinnacle Property (03) 6272 8177**

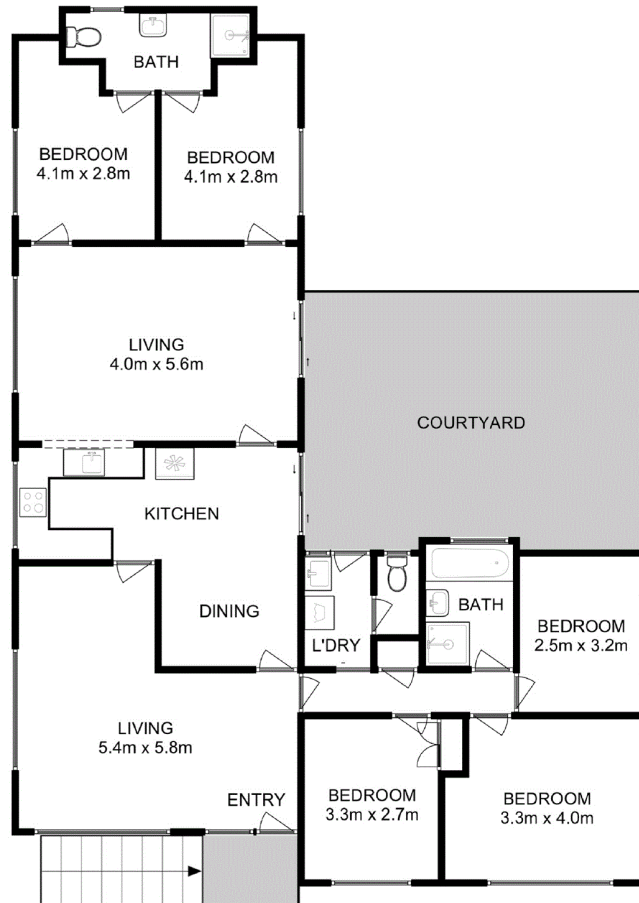
402 Main Road, GLENORCHY TAS 7010

[pinnacleproperty.ljhooker.com.au](http://pinnacleproperty.ljhooker.com.au) | [hello@ljhookerpinnacle.com](mailto:hello@ljhookerpinnacle.com)



**LJ Hooker Pinnacle Property**  
**(03) 6272 8177**

**Disclaimer:** All information contained therein is gathered from relevant third parties sources. We cannot guarantee or give any warranty about the information provided. Interested parties must rely solely on their own en



All measurements are internal and approximate.  
 This plan is a sketch for illustration, not valuation.  
 Produced by Open2view.com for LJ Hooker.

Approx. house area: 152 sqm

