

8 Brian Street, Mount Nasura

Modern Undercroft Masterpiece with Views

Discover sophisticated, single-level living in this architecturally designed undercroft home, completed in 2024. Boasting a unique and modern layout with expansive living spaces, a generous alfresco area, and a sleek, low-maintenance design, this property offers the perfect blend of style and functionality.

Property Overview

This stunning residence is situated in the desirable Mt Nasura and presents a rare opportunity to acquire a contemporary home built with precision and high-quality specifications.

The intelligent undercroft design provides a robust structural foundation, featuring a cantilevered slab and reinforced concrete construction for ultimate durability and a striking modern aesthetic.

Key Features & Highlights

Professionally designed with a focus on modern lines and structural integrity

Detailed cantilevered and suspended concrete slabs
Sophisticated brickwork bond breaker system

5 🏠 3 🚿 0 🚗

FOR SALE
From \$1,100,000

AGENTS

Sajad Ahmadyar
0405 602 210
saj.ahmadyar@ljhooker.com.au

Sajad Ahmadyar
0405 602 210
saj.ahmadyar@ljhooker.com.au

AGENCY

LJ Hooker Thornlie | Canning Vale
(08) 9459 7788

All information contained therein is gathered from relevant third parties sources.
We cannot guarantee or give any warranty about the information provided.
Interested parties must rely solely on their own enquiries.



Engineered beams and lintels for superior strength and longevity
Spacious & Light-Filled Interiors
Expansive open-plan living area filled with natural light
Seamless flow between living, dining, and outdoor entertaining zones
Neutral tones and contemporary finishes creating a timeless aesthetic
Seamless Indoor-Outdoor Flow
Large sliding doors opening to an impressive alfresco area
Perfect for entertaining guests or relaxing year-round
Elevated outlook with panoramic views of the surrounding landscape

Modern Fixtures & Finishes

Aluminium door and window frames for durability and low maintenance
Selected modern handrails and balustrades compliant with BCA standards
Contemporary kitchen and bathrooms with high-end fittings and finishes

Floor Plan & Layout

Intelligent undercroft floor plan maximizing function and space
Spacious garage with additional storage options
Thoughtful balcony step-down detail defining outdoor living zones

Electrical & Connectivity

Ample LED downlights and energy-efficient lighting
Double power points throughout at ideal heights
• wired for data, phone, and TV connections
Hardwired interconnected smoke alarms for enhanced safety
Gas and exhaust provisions for modern appliances

Location —8 Brian Street, Mt Nasura

Nestled in a peaceful street surrounded by greenery, this property offers a tranquil lifestyle while remaining close to:

Local schools and childcare facilities

Shopping centres and amenities

Parks and nature reserves

Public transport links and main road access

A Modern Architectural Gem

Every inch of this home has been crafted with care - from its reinforced structure to its light-filled interiors and seamless connection to the outdoors. Perfect for discerning buyers seeking elegance, comfort, and long-term quality in one stunning package.

Disclaimer: All information contained therein is gathered from relevant third parties sources. We cannot guarantee or give any warranty about the information provided. Interested parties must rely solely on their own enquiries.

MORE DETAILS

Property ID 9BCHA2
Property Type House
Land Area 343 m2

Sajad Ahmadyar 0405 602 210

Sales Representative | saj.ahmadyar@ljhooker.com.au

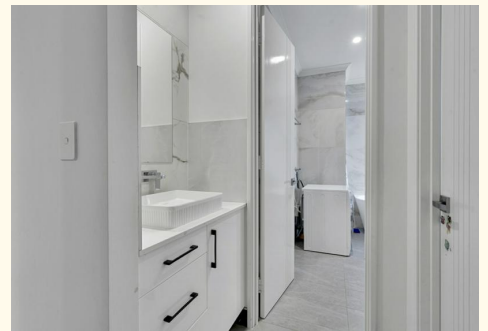
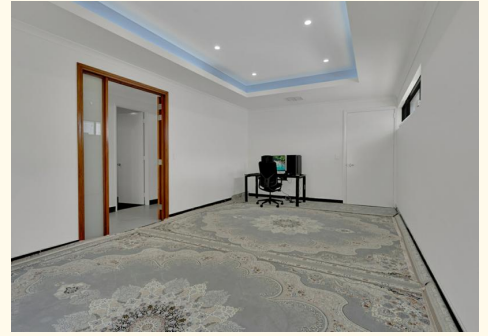
Sajad Ahmadyar 0405 602 210

Sales Representative | saj.ahmadyar@ljhooker.com.au

LJ Hooker Thornlie | Canning Vale (08) 9459 7788

Shop 26 Thornlie Square Shopping Centre, Spencer Road,
THORNLIE WA 6108

thornlie.ljhooker.com.au | thornlie@ljhooker.com.au



All information contained therein is gathered from relevant third parties sources.
We cannot guarantee or give any warranty about the information provided.
Interested parties must rely solely on their own enquiries.