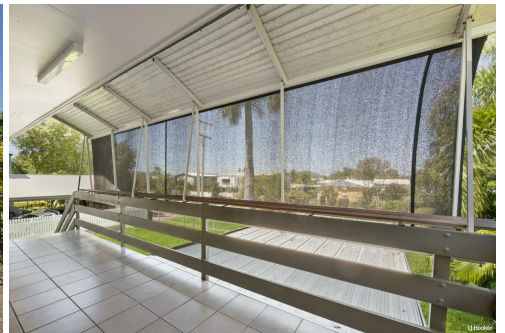




LJ Hooker



## Mount Louisa, 5 Mount Louisa Drive

Spacious Family Home in Mount Louisa - Offers Over \$499,000!

Nestled in the vibrant community of Mount Louisa, 5 Mount Louisa Drive offers the perfect balance of comfort, privacy, and practicality, making it an ideal home for families looking for living separation options. This high-set 3-bedroom, 2-bathroom house on a generous 607 sqm block provides both functional living spaces and a peaceful retreat.

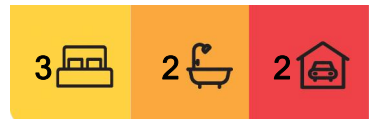
### Key Features:

**Separation & Privacy:** With living areas on each floor, this home offers the perfect setup for families seeking separate zones for relaxation, work, and entertainment. Whether you need a quiet space for the adults or a fun area for the kids, this layout offers it all.

**Three Spacious Bedrooms:** Each bedroom is designed to maximize space and natural light, providing the ideal environment for restful nights.



**Disclaimer:** All information contained therein is gathered from relevant third parties sources. We cannot guarantee or give any warranty about the information provided. Interested parties must rely solely on their own enquiries.



**For Sale**  
Offers over \$499,000

**View**  
[l.jhooker.com.au/3RWHWK](https://l.jhooker.com.au/3RWHWK)

**Contact**  
**Craig Whaley**  
0412 169 554  
[craig.whaley@l.jhooker.com.au](mailto:craig.whaley@l.jhooker.com.au)

**LJ Hooker Townsville**  
07 44262125

A downstairs teenagers retreat offers an additional space for growing families.

Two Functional Bathrooms: Designed with convenience in mind, ensuring everyone has ample space for their daily routines.

Outdoor Oasis: Step outside to a spacious backyard perfect for summer barbecues, outdoor activities, and entertaining. The sparkling swimming pool offers a refreshing retreat, giving the kids their own spot to relax or play while you unwind.

Functional Kitchen: The upstairs kitchen is designed for efficiency, with ample storage and a layout that makes meal preparation a breeze.

Gated Carports: Two gated carports provide secure parking, with room for vehicles.

Additional Features:

Beautiful hardwood flooring throughout

Proximity to parks, schools, and essential amenities

Family-friendly neighborhood with easy access to transportation

This home offers more than just a place to live; it's a space that adapts to your lifestyle.

Whether you're hosting family gatherings, relaxing in your private backyard, or taking advantage of nearby parks, 5 Mount Louisa Drive is the perfect place to call home.

Price Guide: Offers Over \$499,000

Don't miss your chance to secure this exceptional family home in the sought-after suburb of Mount Louisa. Contact us today to arrange a viewing and explore the potential this home has to offer!

## More About this Property

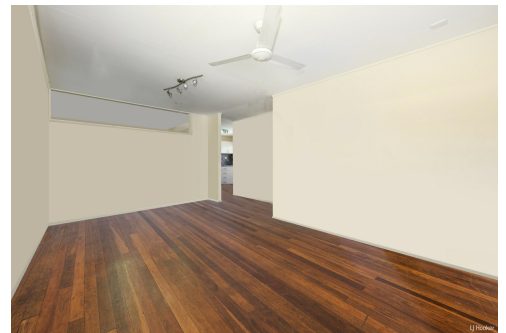
<b>Property ID</b>	3RWHWK
<b>Property Type</b>	House
<b>House Size</b>	214 m <sup>2</sup>
<b>Land Area</b>	607 m <sup>2</sup>
<b>Including</b>	Toilets (2)

**Craig Whaley 0412 169 554**

Sales & Marketing Consultant | [craig.whaley@ljhooker.com.au](mailto:craig.whaley@ljhooker.com.au)

**LJ Hooker Townsville 07 44262125**

Shop 18/39 Eyre Street, NORTH WARD QLD 4810  
[townsville.ljhooker.com.au](http://townsville.ljhooker.com.au) | [townsville@ljhooker.com.au](mailto:townsville@ljhooker.com.au)



**Disclaimer:** All information contained therein is gathered from relevant third parties sources. We cannot guarantee or give any warranty about the information provided. Interested parties must rely solely on their own enquiries.

**LJ Hooker Townsville**  
**07 44262125**