



6 Roderic Court, Mount Lofty

## A Bespoke, Designer Home with the Best View in Town

Nestled as high on Mount Lofty as you can get, peruse the city skyline, this stunningly elegant home is an enviable opportunity just waiting for you to secure. In one of our most prized locations, peace and tranquility abound down the end of your own private driveway.

A meticulous renovation, no stone has been left unturned. Ensuring this home boasts some of the most lavish finishes imaginable. Words can't properly articulate the feeling of bliss this home ensues as it draws inspiration from timeless design. A true entertainer's home designed with love to create memories in.

### Offering-

- Four built in bedrooms with two on the upper level and two on the middle level, potential for a fifth downstairs
- Spectacular marble encased ensuite and bespoke main bathroom, nearly too nice for the kids
- The kitchen is a masterpiece with crisp white cabinetry offset with brass fittings and integrated appliances
- Truly the heart of the home, the island bench offers a space for friends a family to gather with loads of bench space
- Casual dining or family area with CBD views perfect for relaxed

4 3 2

**FOR SALE**  
\$2,650,000 - \$2,850,000

**VIEW**  
By Appointment

**AGENTS**  
Matthew Keeley  
0437 720 885  
mkeeley@ljht.com.au

**AGENCY**  
LJ Hooker Toowoomba  
(07) 4688 2222

All information contained therein is gathered from relevant third parties sources.  
We cannot guarantee or give any warranty about the information provided.  
Interested parties must rely solely on their own enquiries.

**LJ Hooker**

- evenings at home
- Massive formal lounge room boasts towering windows framing the city scape and flows to the front balcony
- Running the length of the home, the front balcony begs to be enjoyed, watching the sunset and city lights
- The spacious yet private rear courtyard is easy to maintain and ideal for long lunches in the sun
- Downstairs has an open media room and home office or could be used as a guests retreat, a truly versatile space

This is a bespoke renovation in a private location overlooking the city skyline. A once in a lifetime opportunity to own a unique home where life can be lived, family can be loved, and memories can be made.

Available for inspection by appointment only so please connect with Matthew Keeley to arrange your time!

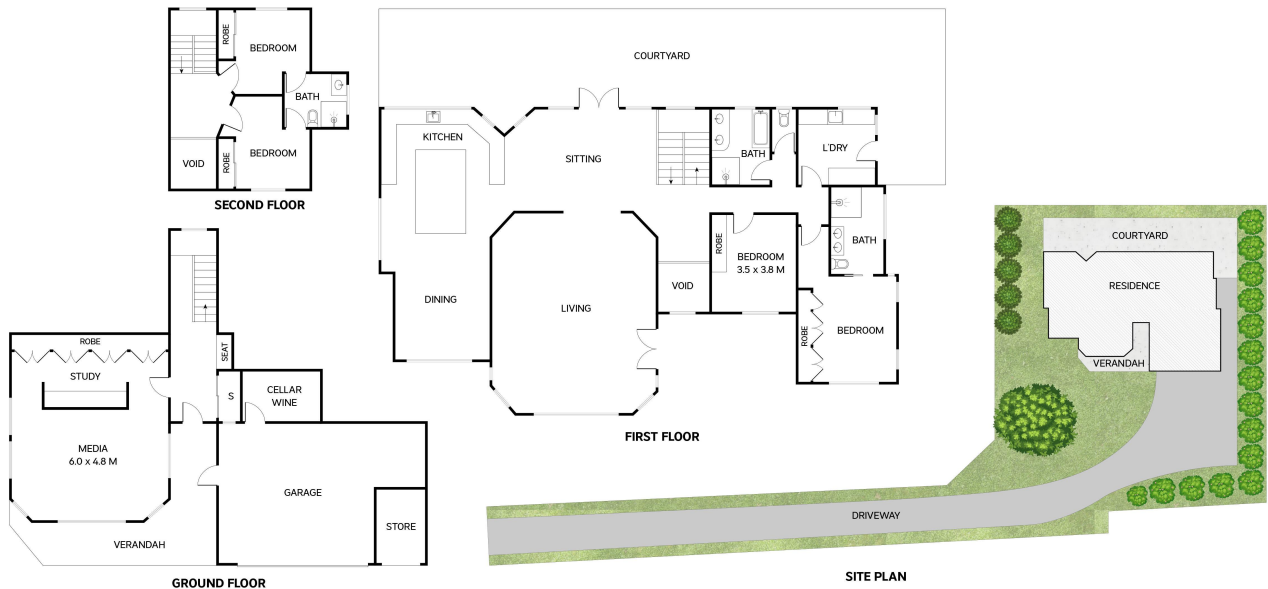
## MORE DETAILS

Property ID	1ZE3F4W
Property Type	House
Land Area	1415 m2
Including	Ensuite
	Study
	Air Conditioning
	Toilets (3)
	Built-in-Robes
	Area Views
	City Views
	Close to Schools
	Close to Shops
	Close to Transport
	Liveability

**Matthew Keeley 0437 720 885**  
Residential Sales Manager | mkeele@ljht.com.au

**LJ Hooker Toowoomba (07) 4688 2222**  
Level 1, 677-683 Ruthven Street, TOOWOOMBA QLD 4350  
toowoomba.ljhooker.com.au | toowoomba@ljht.com.au





Total: 476m<sup>2</sup>

## 6 Roderic Court

Mount Lofty



This plan is for representational purposes only. All dimensions are approximate and shouldn't be solely relied upon. Floorplan created by **Vue Digital**.