



43 Geoffrey Street, Mount Lofty

## Family abode on a stunning block boasting Character & Convenience

Take the time to explore this beautiful 1920's family home. Perched on a 992m2 allotment in a prime North-East corner location. This residence offers a highly sought after opportunity to set your family up just a stone's throw from parks, shops, cafes and schools. The home encapsulates all the character features you'd expect from the 1920's era.

- Boasting 4 spacious bedrooms, plus a study
- Two bathrooms including an ensuite off the main bedroom
- Centrally positioned formal lounge and formal dining rooms
- Light filled modern kitchen with Caesarstone bench tops and walk in pantry
- Casual family room off the kitchen flowing out to a deck and beyond to the back yard
- Double car accommodation with additional space for a workshop or work from home set up
- The high fenced yard offers privacy and security

Let your family enjoy the dappled shade of the long-established trees throughout the grounds. A beautiful place for kids to explore and your

4 🏠 2 🚗 2 🚗

### FOR SALE

Please Call

### AGENTS

Matthew Keeley  
0437 720 885  
mkeeley@ljht.com.au

### AGENCY

LJ Hooker Toowoomba  
(07) 4688 2222

All information contained therein is gathered from relevant third parties sources. We cannot guarantee or give any warranty about the information provided. Interested parties must rely solely on their own enquiries.



family to grow. The residence offers a chance to enjoy all the features a period home has to offer and is begging for you to add your own touches to truly make this "your home".

Available to inspect by way of private appointment, please reach out to make a time to have a look.

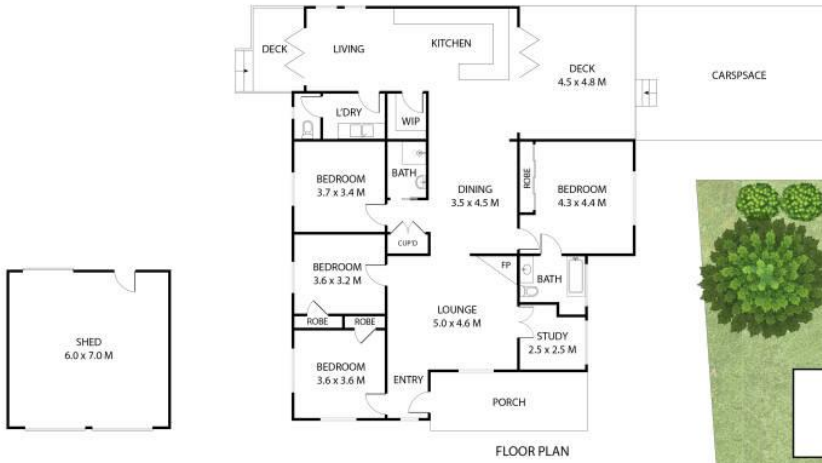
### MORE DETAILS

Property ID	1ZU6F4W
Property Type	House
House Size	112 m2
Land Area	992 m2

**Matthew Keeley 0437 720 885**  
Residential Sales Manager | [mkeeley@ljht.com.au](mailto:mkeeley@ljht.com.au)

**LJ Hooker Toowoomba (07) 4688 2222**  
Level 1, 677-683 Ruthven Street, TOOWOOMBA QLD 4350  
[toowoomba.ljhooker.com.au](http://toowoomba.ljhooker.com.au) | [toowoomba@ljht.com.au](mailto:toowoomba@ljht.com.au)





  
Total: 235m<sup>2</sup>

43 Geoffrey Street  
Mount Lofty



This plan is for representational purposes only. All dimensions are approximate and shouldn't be solely relied upon.  
Floorplan created by **Vue Digital**

All information contained therein is gathered from relevant third parties sources.  
We cannot guarantee or give any warranty about the information provided.  
Interested parties must rely solely on their own enquiries.

