



37A Alford Street, Mount Lofty

2 1 1

A Storybook Cottage in a Premium Location

Perfectly positioned in the heart of Mount Lofty only a hop skip and a jump from shops, schools, parks and cafes. This charming 1920's cottage is the epitome of Eastside living boasting character and charm in a convenient location.

- 2 generous sized bedrooms
- Walk in robe from the main or a study; nursery or build an ensuite
- Spacious galley kitchen with stainless steel appliances and country style sink
- Large bathroom with claw foot tub and separate shower
- Boasting signature character features, such as timber floors and VJ walls
- Outdoor living is a delight on the wrap around verandah
- Set on an easy to maintain allotment, which just allows you to enjoy the location even more.

With its white picket fence and quaint street appeal this is a quintessential Eastside cottage. Ideal for singles or couples. Perfect as a base in Toowoomba if you have kids at school or work out of town, whatever your demand, it is a fantastic investment in a high growth position not to be overlooked.

FOR SALE
Contact Agent

AGENTS

Matthew Keeley
0437 720 885
mkeeley@ljht.com.au

Sarah Fard
0474 571 674
sfard@ljht.com.au

AGENCY

LJ Hooker Toowoomba
(07) 4688 2222

All information contained therein is gathered from relevant third parties sources.
We cannot guarantee or give any warranty about the information provided.
Interested parties must rely solely on their own enquiries.

LJ Hooker

Council Rates: \$3746.16 p.a.
Water Rates: \$671.50 p.a.

MORE DETAILS

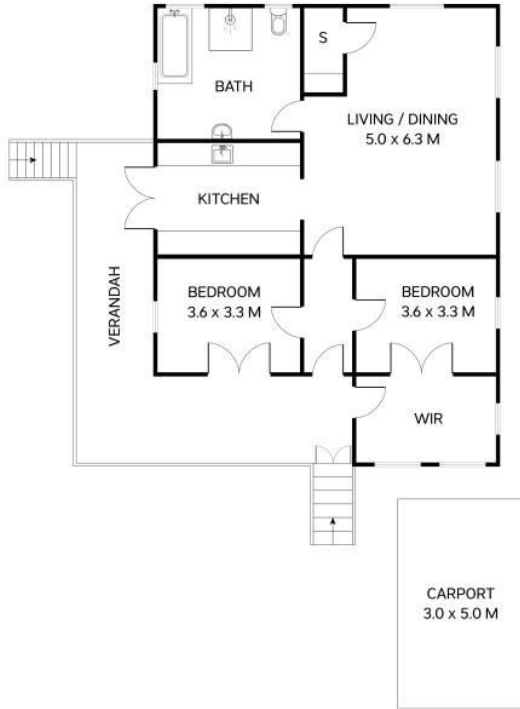
Property ID 1ZEWF4W
Property Type House
Land Area 400 m2

Matthew Keeley 0437 720 885
Residential Sales Manager | mkeeley@ljht.com.au
Sarah Fard 0474 571 674
Residential Sales Executive | sfard@ljht.com.au

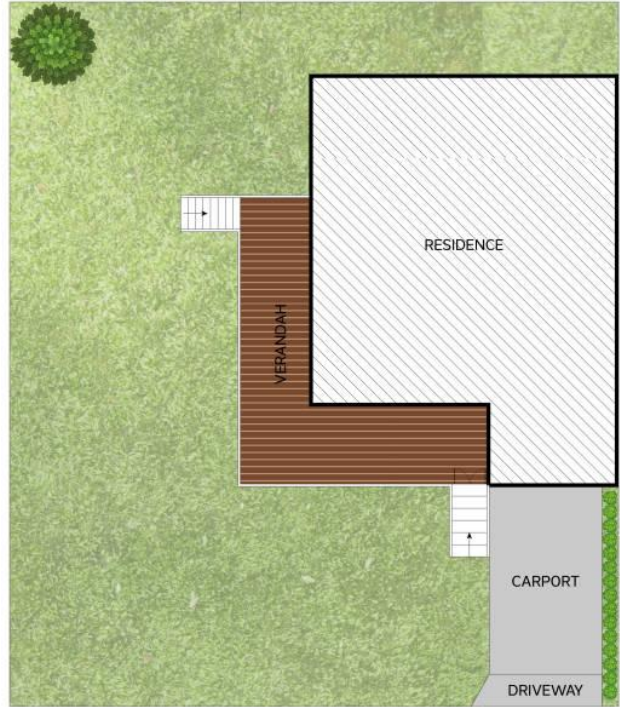
LJ Hooker Toowoomba (07) 4688 2222
Level 1, 677-683 Ruthven Street, TOOWOOMBA QLD 4350
toowoomba.ljhooker.com.au | toowoomba@ljht.com.au



All information contained therein is gathered from relevant third parties sources.
We cannot guarantee or give any warranty about the information provided.
Interested parties must rely solely on their own enquiries.



FLOOR PLAN



SITE PLAN



Total: 115m²

37A Alford Street
Mount Lofty



This plan is for representational purposes only. All dimensions are approximate and shouldn't be solely relied upon. Floorplan created by Vue Digital.