



Mount Lawley, 2/582 William Street

Must See in Mount Lawley!



Welcome to 2/582 William Street, Mount Lawley. This newly partially renovated ground floor apartment is one of only 6 in this prime location.

What stands out here are the bedrooms and bathroom sizes and although recently painted and benefitting from new wood look floors and carpets throughout, there is still scope to upgrade the bathroom/laundry and kitchen to add further value.

The front of the unit offers a little seating area surrounded by well-established gardens.

This property is also an absolute gem for an investor and will generate a high rental yield.

What we love:

* Prime Mount Lawley Location

For Sale
From \$550,000

View
By Appointment

Contact
Katie Lawley
0448 682 624
katie.lawley@ljhooker.com.au



LJ Hooker City Residential
(08) 9325 0700

Disclaimer: All information contained therein is gathered from relevant third parties sources. We cannot guarantee or give any warranty about the information provided. Interested parties must rely solely on their own enquiries.

- * Ground floor in lovely small development
- * Large bedrooms
- * Secure parking and store
- * Reasonable strata fees
- * Community environment
- * Great first home or investment

* NB - Staged photo's for presentation purposes only

Rates:

Council - \$1,742.04 p.a.

Water - \$1,084.22 p.a.

Strata - Admin \$467.50 p/qtr. Reserve \$125.00 p/qtr.

More About this Property

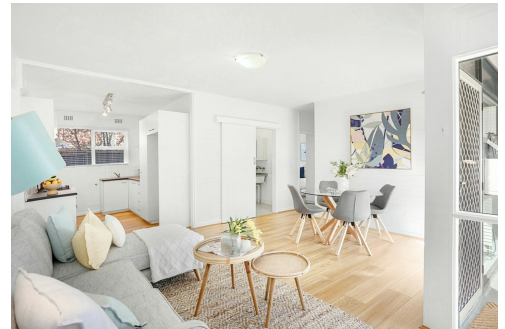
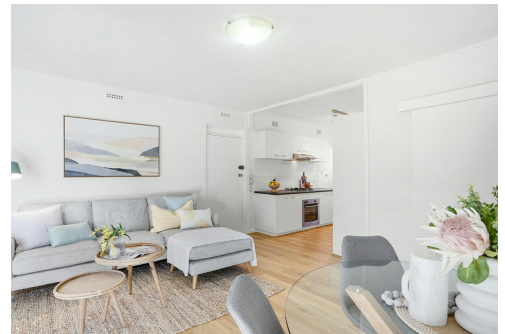
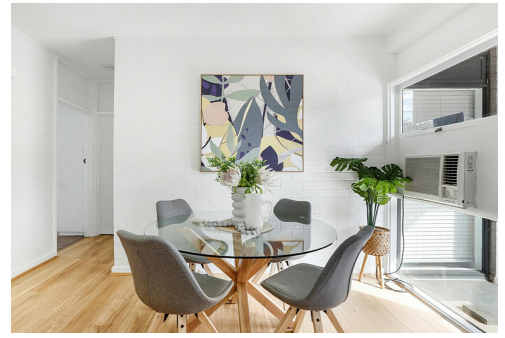
Property ID	3THTFGJ
Property Type	Unit
Including	Air Conditioning Toilets (1) Floorboards Built-in-Robes Secure Parking Liveability

Katie Lawley 0448 682 624

Sales Executive | katie.lawley@ljhooker.com.au

LJ Hooker City Residential (08) 9325 0700

Shop 30, 82 Royal Street, EAST PERTH WA 6004
cityresperth.ljhooker.com.au | hello@ljhpxp.com.au



**LJ Hooker City Residential
(08) 9325 0700**

Disclaimer: All information contained therein is gathered from relevant third parties sources. We cannot guarantee or give any warranty about the information provided. Interested parties must rely solely on their own enquiries.



GROUND FLOOR UNIT 2



SITE LOCATION PLAN

2/582 William Street, Mount Lawley, WA 6050

Katie Lawley 0448 682 624

Living size: 66m²

2 Bedroom, 1 Bathroom



The above plan is an artist's impression only, it includes elements that are for display purposes only and may not be to scale. Measurements do not take into account wall thickness. Landscaping shown is indicative only. Dimensions are approximate. Drawings are only to be used for display purposes. Bookings: contact@jarraesign.com



cityresperth.ljhooker.com.au