



11/551 William Street, Mount Lawley

## UNDER OFFER - HOME OPEN CANCELLED

Welcome to 551 William Street, positioned on the ground floor of this small development in a perfect location.

This would be ideal for a seasoned investor that knows the Mount Lawley market or a first timer looking to get on the investment ladder.




- \* REGISTERING TO VIEW THIS PROPERTY IS A MUST, NO ENTRY WITHOUT\*\*

What we love:

- Two bedrooms and good size bathroom with laundry
- Small development of just 15 apartments
- Stones throw from Hyde Park
- Ground floor unit
- Great size bedrooms
- Unallocated parking
- Tenant in place on fixed term lease to April 2026 at \$400 pw with rent review in place
- Scope to add value

Rates:

All information contained therein is gathered from relevant third parties sources. We cannot guarantee or give any warranty about the information provided. Interested parties must rely solely on their own enquiries.

2  1  1 

### FOR SALE

Suit buyers around \$475,000

### AGENTS

Katie Lawley  
0448 682 624  
katie.lawley@ljhooker.com.au

### AGENCY

LJ Hooker City Residential  
(08) 9325 0700



Council - \$1,707.81 p.a.  
Water - \$1,072.64 p.a.  
Strata - \$1,011.66 p/qtr.

## MORE DETAILS

Property ID	3UDWFGJ
Property Type	Unit
Including	Air Conditioning Built-in-Robes Liveability

**Katie Lawley 0448 682 624**

Sales Executive | [katie.lawley@ljhooker.com.au](mailto:katie.lawley@ljhooker.com.au)

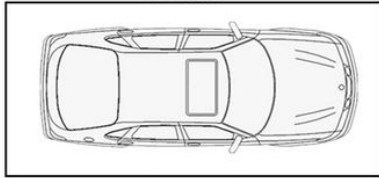
**LJ Hooker City Residential (08) 9325 0700**

Shop 30, 82 Royal Street, EAST PERTH WA 6004  
[cityresperth.ljhooker.com.au](http://cityresperth.ljhooker.com.au) | [hello@ljhxp.com.au](mailto:hello@ljhxp.com.au)

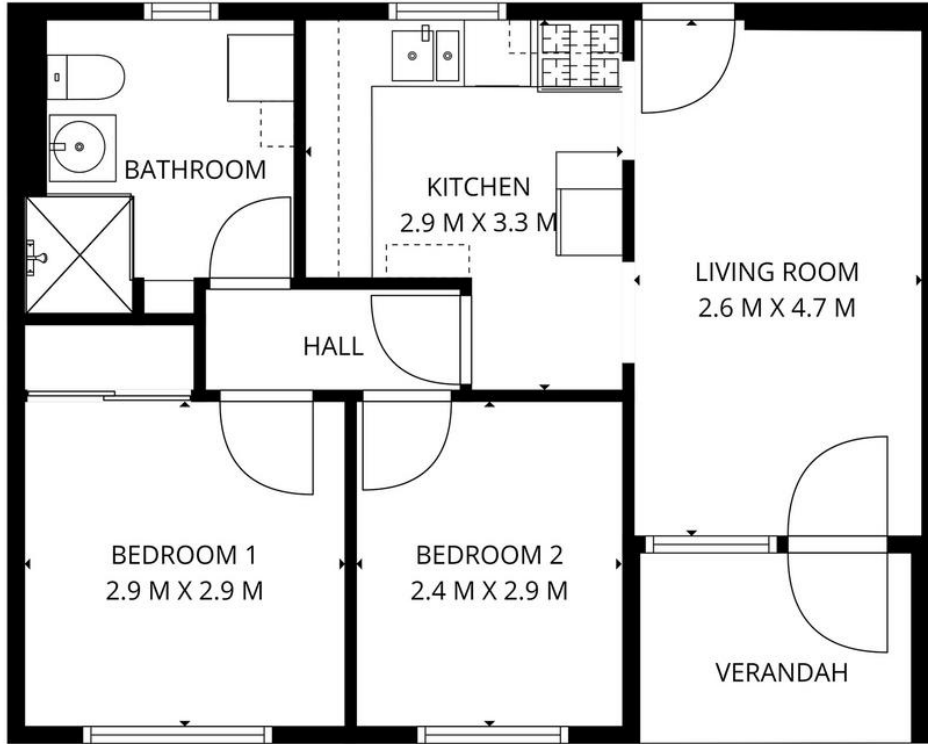


All information contained therein is gathered from relevant third parties sources.  
We cannot guarantee or give any warranty about the information provided.  
Interested parties must rely solely on their own enquiries.

CARBAY



(NOT ACTUAL LOCATION)



<i>Approximate Areas</i>	
Internal Area	53m <sup>2</sup>
Verandah	5m <sup>2</sup>
Total Lot Size	58m <sup>2</sup>



11/551 William St, Mount Lawley

This floor plan is for illustrative purposes only. While every effort has been made to provide an accurate representation, all measurements & other information are approximation only.

www.propertyexperience.ljhooker.com.au  
www.perthrealestatemedia.com

