

## Mount Lawley, 8/43 Walcott Street

### 1930's Glamour with a View To Kill

If your property vibe is period with captivating high ceilings, stunning polished jarrah floorboards, ceiling roses and leadlight windows then this is absolutely the property for you!

Built in 1932 in this cosy development of only 8 apartments in the heart of Mount Lawley, this evocative apartment also has an amazing direct city view! Many evenings will be spent watching sunsets over Perth and the city coming to life with an uninterrupted view. In fact there are stunning views from every window in the apartment.

You are transported to opulence as soon as you enter this charming abode.

What we love -



**Disclaimer:** All information contained therein is gathered from relevant third parties sources. We cannot guarantee or give any warranty about the information provided. Interested parties must rely solely on their own enquiries.



#### For Sale

From \$530,000

#### View

[ljhooker.com.au/3MA7FGJ](https://ljhooker.com.au/3MA7FGJ)

#### Contact

**Katie Lawley**

0448 682 624

[katie.lawley@ljhooker.com.au](mailto:katie.lawley@ljhooker.com.au)

**LJ Hooker City Residential**  
(08) 9325 0700

- \* Small development located within walking distant to Beaufort Street
- \* Stunning high ceilings, ceiling roses and leaded light feature windows
- \* Period light fittings and switches
- \* Stunning decorative fireplace
- \* Newly polished jarrah floors throughout and freshly painted
- \* Two great size bedrooms
- \* Abundance of natural light
- \* Large living and dining
- \* Incredible city view from balcony
- \* Secure allocated parking

Rates & Dimesions:

- Council Rates \$1,544.15 pa
- Water Rates \$873.53 pa
- Strata Levy \$725.00 p/qtr
- Total Area 77sqm
- Internal Area 57sqm
- Balcony 6sqm
- Car Bay 14sqm

Register your interest ASAP!

## More About this Property

Property ID	3MA7FGJ
Property Type	Apartment
House Size	77 m²
Including	Air Conditioning Fire Place Balcony Outdoor Entertaining Secure Parking

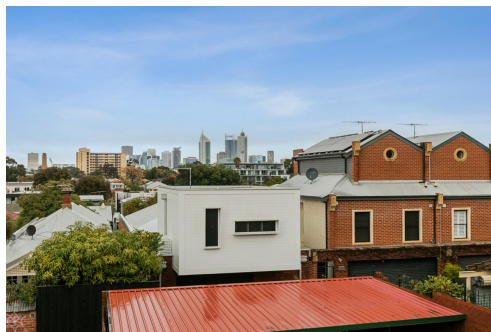
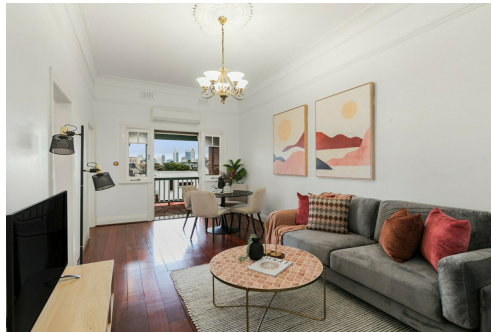
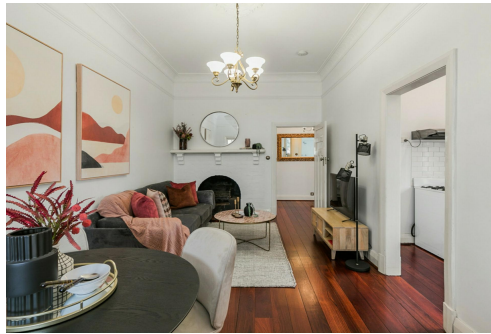
**Katie Lawley 0448 682 624**

Sales Executive | [katie.lawley@ljhooker.com.au](mailto:katie.lawley@ljhooker.com.au)

**LJ Hooker City Residential (08) 9325 0700**

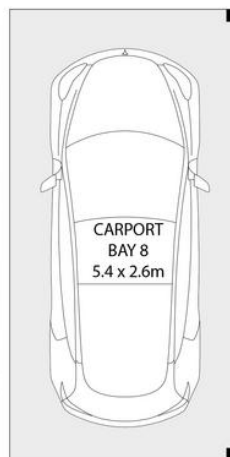
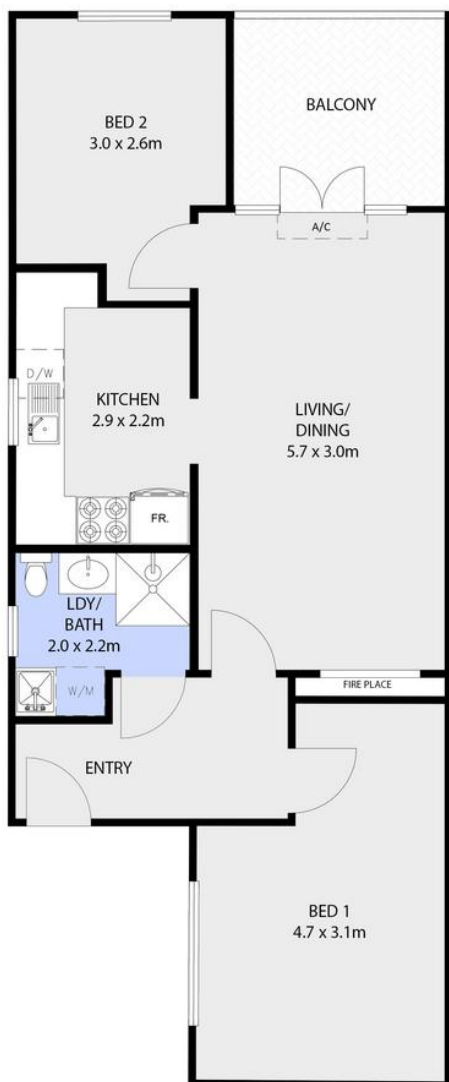
Shop 30, 82 Royal Street, EAST PERTH WA 6004

[cityresperth.ljhooker.com.au](http://cityresperth.ljhooker.com.au) | [cityresperth@ljhooker.com.au](mailto:cityresperth@ljhooker.com.au)

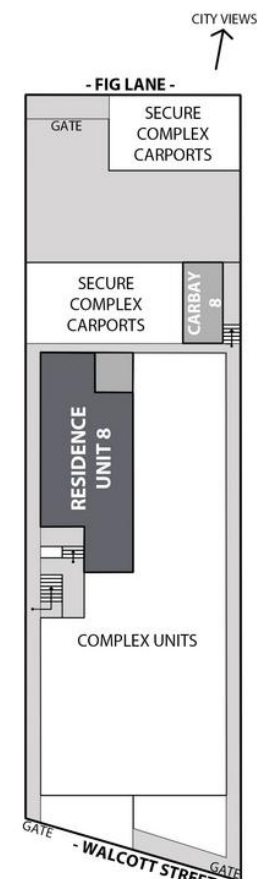


**Disclaimer:** All information contained therein is qathered from relevant third parties sources. We cannot guarantee or give any warranty about the information provided. Interested parties must rely solely on their own enquiries.

**LJ Hooker City Residential  
(08) 9325 0700**



(not actual location)



**SITE LOCATION PLAN**

8/43-45 Walcott St, Mount Lawley, WA 6050

Katie Lawley 0448 682 624

Living size: 62m<sup>2</sup>

Balcony: 6m<sup>2</sup> Total size: 68m<sup>2</sup>

2 Bedrooms, 1 Bathroom, 1 Car space



The above plan is an artist's impression only, it includes elements that are for display purposes only and may not be to scale. Measurements do not take into account wall thickness. Landscaping shown is indicative only. Dimensions are approximate. Drawings are only to be used for display purposes. Bookings: contact@jarraesign.com



[cityresperth.ljhooker.com.au](http://cityresperth.ljhooker.com.au)