



2 Sylvia Place, Mount Hutton

ELEVATE YOUR LIFESTYLE!

This stylish home is situated on an elevated corner block, enjoying sweeping local views and amazing sunsets.

From the gourmet kitchen, open plan and multiple living areas to the covered alfresco dining area and sparkling in-ground pool, every day will feel like you are on holidays.

Superbly maintained and presented, this home offers a great lifestyle in a perfect location; close to shops, schools and the shores of Lake Macquarie.


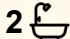

There is a double garage with internal access and a workshop space which could easily be converted into a home office or fourth bedroom.

There are two garden sheds and an off-street parking pad, perfect for a boat, trailer or caravan.

This single level home is ready to welcome you and your family today.
FEATURES:

- Three generous bedrooms
- Master with walk through wardrobe and ensuite
- Two large living areas centred around an entertainer's kitchen with modern Westinghouse appliances

All information contained therein is gathered from relevant third parties sources. We cannot guarantee or give any warranty about the information provided. Interested parties must rely solely on their own enquiries.

3  2  2 

AUCTION

Thu 21st May @ 6:00PM

VIEW

Fri 24th Apr @ 5:00PM - 5:30PM

AGENTS

John Church
0414 294 944
john.church@ljhooker.com.au

Robert Church
0468 813 659
Robert.church@ljhooker.com.au

AGENCY

LJ Hooker Warners Bay
(02) 4915 3800



- Gas fire place
- Ducted air conditioning
- Tiled floors, carpet to bedrooms
- Elevated views from a prominent corner block
- Sparkling covered pool, ready to enjoy in all seasons
- Alfresco dining area with louvered shutters to control light and breezes
- Motorised blinds and plantation shutters to living and bedroom areas
- Solar panels (3.21kW capacity)
- Full double garage plus workshop with internal access
- Parking pad for boat, trailer or caravan
- Established, easy care gardens
- Two garden sheds and covered BBQ area
- Convenient and central location in quiet cul-de-sac

The information contained herein has been provided by people we believe to be reliable, however all interested parties must rely on their own enquiries.

MORE DETAILS

Property ID	ZDFHN8
Property Type	House
Land Area	612.3 m2
Including	Air Conditioning Built-in-Robes Close to Schools Close to Shops Close to Transport Exhaust Fenced Backyard Pool

John Church 0414 294 944

Sales and Marketing Executive | Independent Contractor |
john.church@ljhooker.com.au

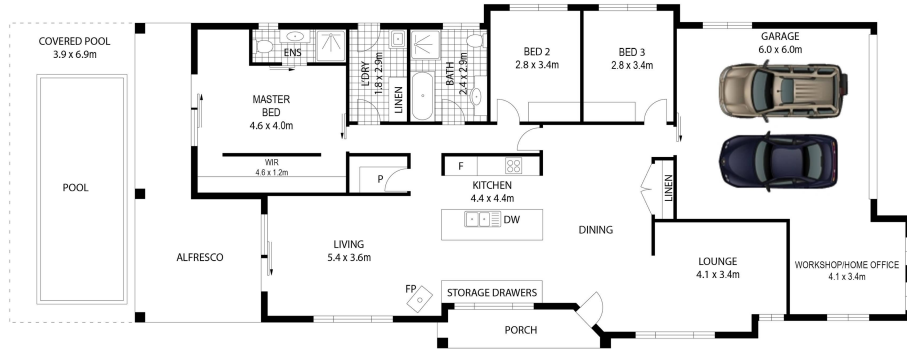
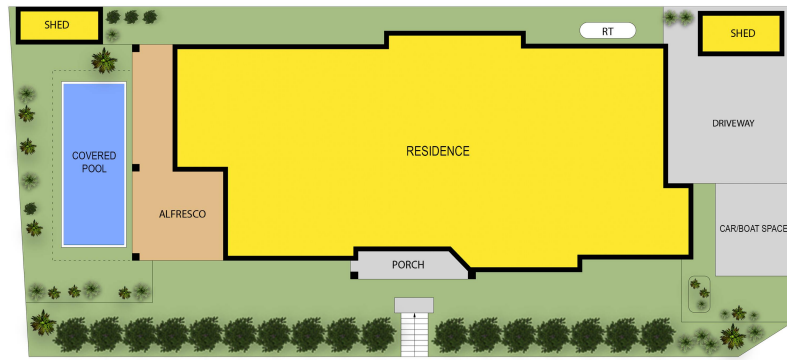
Robert Church 0468 813 659

Sales Executive | Robert.church@ljhooker.com.au

LJ Hooker Warners Bay (02) 4915 3800

Shop 12, 240-260 Hillsborough Rd, WARNERS BAY NSW 2282
warnersbay.ljhooker.com.au | warnersbay@ljhooker.com.au





LJ Hooker 2 Sylvia Place
Mount Hutton

Total internal Floor Area : 148 sqm

Scale in metres. Indicative only. Dimensions are approximate. All information contained herein is gathered from sources we believe to be reliable. However we cannot guarantee its accuracy and interested persons should rely on their own enquiries

