



Mount Gravatt East, 32 Panorama Place

SOLD BY KOS COMINO

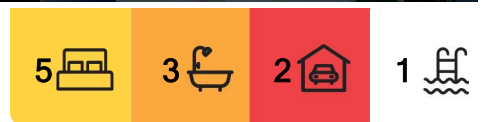
A sprawling stunner located in one of Mount Gravatt East's finest streets, this rendered double-storey residence is the personification of modern sophistication and style. Boasting five spacious bedrooms, two lounges including a sunken formal lounge, and a family dining area, this home has been designed with comfort and luxury in mind. Set on a massive 1,000 sqm block adorned with manicured, low-maintenance gardens and an indulgent saltwater swimming pool, this entertainer's dream is perfect for large gatherings and intimate family moments alike. A vast tiled balcony offers breathtaking city vistas, making it ideal for sunset drinks or morning coffees. Nestled close to shops, parks, schools, and hospitals, this magnificent home offers everything for the discerning buyer, all within a tranquil cul-de-sac in the coveted 4122 postcode.

Key Features:

- Expansive five-bedroom residence with air-conditioned lounges, including a formal



Disclaimer: All information contained therein is gathered from relevant third parties sources. We cannot guarantee or give any warranty about the information provided. Interested parties must rely solely on their own enquiries.



For Sale
Please Call

View
ljhooker.com.au/B2B0F4R

Contact
Kosma Comino
0438 365 222
kosmacomino@ljhpp.com.au

Erfan Babaie
0481 868 871
erfanbabaie@ljhpp.com.au

LJ Hooker Property Partners
07 3344 0288

sunken lounge, and a family dining room.

- Situated on a sprawling 1,000 sqm block with low-maintenance gardens and a luxurious saltwater swimming pool.
- Grand entertainer's balcony with stunning city views, plus a spacious patio perfect for alfresco dining.
- Located on one of Mount Gravatt East's most prestigious cul-de-sac streets with sweeping city vistas.
- Close proximity to buses, shops, parks, motorways, and top local amenities like schools and hospitals.

Nestled between the Pacific and Gateway motorways, this prime location offers families and professionals the ultimate in convenience. Whether you're running errands, dropping off the kids, or heading to work, everything is just a short stroll or drive away. Enjoy the luxury of walking to nearby schools, shops, childcare, and parks, while Griffith University, major hospitals, and popular shopping centres are just minutes away. With its unbeatable connectivity and proximity to essential services, this area truly offers the best of Brisbane living.

- 900 m to bus stop
- 1 km to Mount Gravatt State School
- 1.1 km to Pod Early School
- 1.3 km to Mount Gravatt State High School
- 1.3 km to Mt Gravatt Plaza
- 1.4 km to Panorama Place Park
- 1.6 km to TAFE Queensland Mount Gravatt
- 2 km to Seton College
- 2.8 km to Griffith University Mount Gravatt Campus
- 4.1 km to Westfield Mt Gravatt
- 4.7 km to Greenslopes Private Hospital
- 5.4 km to Westfield Carindale
- 7.3 km to QE II Jubilee Hospital

Situated at the centre of a serene cul-de-sac, this home stands tall and proud on an elevated block, offering panoramic views of Brisbane's skyline. The beautifully rendered double-storey facade is framed by meticulously manicured gardens, which are dotted with outdoor lighting to enhance the property's allure after dark.

A radiant double-doored portico, accented with glass block feature windows, invites you into the home, while ample driveway parking and a double garage ensure convenience for both residents and guests.

Inside, this home is a haven of timeless elegance, with chic modern touches like Plantation shutters and glowing downlights adding a contemporary flair. The sunken formal lounge, with its plush carpeting, air conditioning, and moody navy feature wall, provides an opulent space to entertain guests.

Adjacent to this is a spacious, tiled lounge with a crackling fireplace, perfect for festive family gatherings or quiet movie nights. For everyday dining, the adjacent tiled family dining area with its stylish raked ceiling offers a sophisticated space for family meals or dinner parties.



LJ Hooker Property Partners
07 3344 0288

Disclaimer: All information contained therein is gathered from relevant third parties sources. We cannot guarantee or give any warranty about the information provided. Interested parties must rely solely on their own enquiries.

The sparkling original kitchen, with neutral tones and ample cabinetry, overlooks the dining area, ensuring easy access and flow when entertaining. Featuring abundant bench space, a breakfast bar for casual dining, and a convenient dishwasher, this immaculate kitchen is a dream come true for any home chef.

Step outside to discover a secluded patio, ideal for alfresco dining or casual family barbecues. Overlooking the pristine saltwater pool surrounded by tropical landscaping, this outdoor haven is a hub for relaxation and fun. The vast tiled balcony, accessible from the sunken lounge, offers even more space for entertaining and lounging while taking in the sparkling city skyline.

With five large bedrooms, this home has ample space for every member of the family or even guests. All bedrooms are carpeted and come with built-in robes, while four have ceiling fans and three are air-conditioned for year-round comfort.

The master suite is a retreat in itself, featuring a spacious layout and access to an ensuite with a spa bath, dual vanity, and shower. Two additional original yet immaculate bathrooms provide further comfort for the rest of the household, with one boasting a bathtub and dual vanity for added luxury.

This grand home also includes a central vacuum system, adding a touch of modern convenience to its pristine interiors.

Don't miss out on this rare opportunity to own a sprawling entertainer in one of Mount Gravatt East's most sought-after streets. To experience the sophistication and lifestyle this property has to offer, contact Kosma Comino or Karl Gillespie today to arrange a viewing or find out more!

All information contained herein is gathered from sources we consider to be reliable. However, we cannot guarantee or give any warranty about the information provided and interested parties must solely rely on their own enquiries.

Desma Pty Ltd with Sunnybank Districts P/L T/A LJ Hooker Property Partners
ABN 33 628 090 951 / 21 107 068 020



LJ Hooker Property Partners
07 3344 0288

Disclaimer: All information contained therein is gathered from relevant third parties sources. We cannot guarantee or give any warranty about the information provided. Interested parties must rely solely on their own enquiries.

More About this Property

Property ID	B2B0F4R
Property Type	House
Land Area	1000 m ²
Including	Ensuite Air Conditioning Toilets (3) Pool Fire Place Balcony Dishwasher Outdoor Entertaining Built-in-Robes Secure Parking Fully Fenced Remote Garage

Kosma Comino 0438 365 222

Partner & Agent/Independent Contractor | kosmacomino@ljhpp.com.au

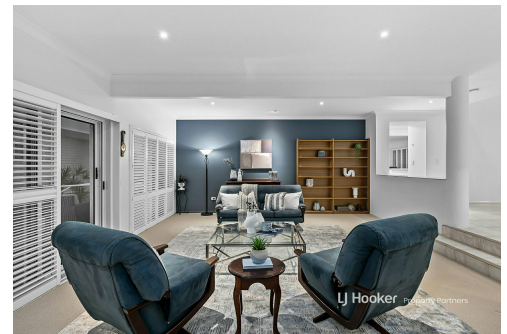
Erfan Babaie 0481 868 871

Sales Agent to Kos Comino | erfanbabaie@ljhpp.com.au

LJ Hooker Property Partners 07 3344 0288

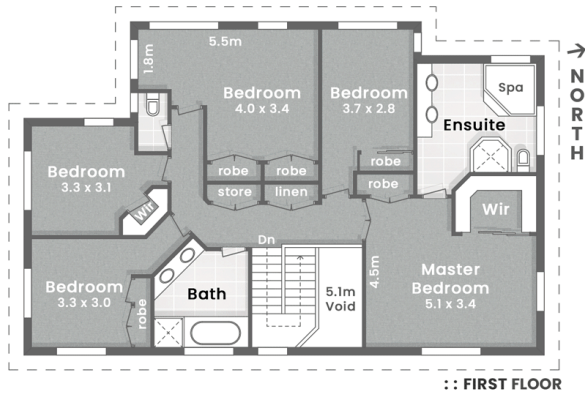
25 Pinelands Road, SUNNYBANK HILLS QLD 4109

propertypartners.ljhooker.com.au | sunnybankhills@ljhpp.com.au

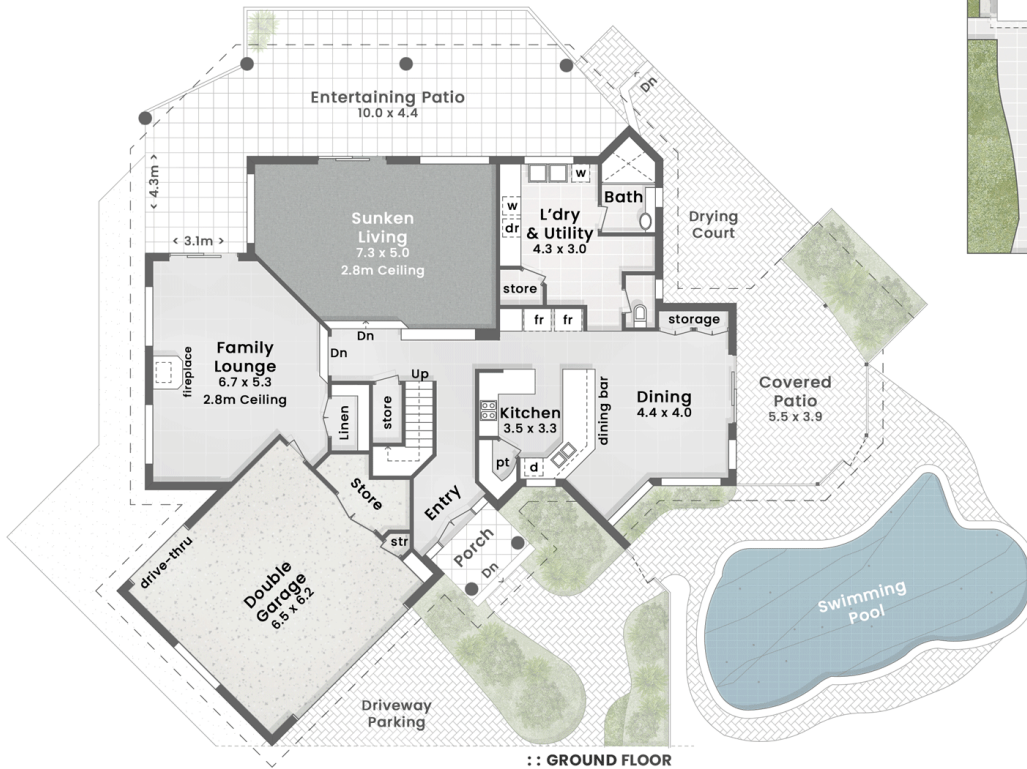
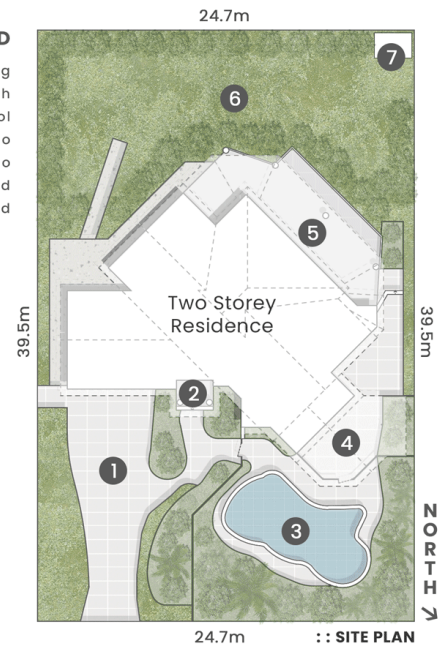


LJ Hooker Property Partners
07 3344 0288

Disclaimer: All information contained therein is gathered from relevant third parties sources. We cannot guarantee or give any warranty about the information provided. Interested parties must rely solely on their own enquiries.



- LEGEND**
1. Driveway Parking
 2. Entry Porch
 3. Swimming Pool
 4. Covered Patio
 5. Entertaining Patio
 6. Grass Yard
 7. Garden Shed



LJ Hooker
Property Partners

**32 Panorama Place
MOUNT GRAVATT EAST**

Internal 348m² | Patios & Porch 86m² | **Total 434m²**

1,000m²

5 Bed

3 Bath

2 Car + Off-Street

DISCLAIMER: This is not a legal document therefore all measurements and information provided is subject to survey. No permission is given to use or alter this Floor Plan without the consent of Pure Design Concepts. The overall presentation style, layout, imagery, fonts, background, colours and terminology has been originally created by PDC and is subject to strict copyright. No ownership is taken of building design. Find out more at puredesignconcepts.com.au

pdc.

LJ Hooker

**LJ Hooker Property Partners
07 3344 0288**

Disclaimer: All information contained therein is gathered from relevant third parties sources. We cannot guarantee or give any warranty about the information provided. Interested parties must rely solely on their own enquiries.