



Mount Cotton, 112 Balthazar Circuit

For the Discerning Buyer.....

****INSPECTION BY APPOINTMENT****

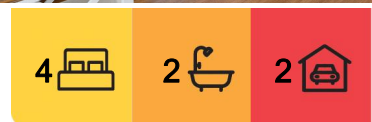
Just like the proverbial "icing on the cake", this outstanding Metricon, steel frame home has been meticulously presented to showcase its top shelf inclusions and finishes. The fastidious owners spared no expense turning their vision into reality when building their dream home, with every detail thoughtfully considered. The new owners will relish just moving straight in and enjoying every aspect of this gorgeous home.

Situated in Greater Silkwood Estate, which has the closest proximity to Victoria Point and Redland Bay, with the shopping village, 41-acre Community Park and Bayview Conservation Park just a short distance away, your family will be ready for their next chapter and thrive in one of the most impeccably appointed homes in this choice suburb.

*Main bedroom with walk-in and built-in robes; massive ensuite with double vanities, and



Disclaimer: All information contained therein is gathered from relevant third parties sources. We cannot guarantee or give any warranty about the information provided. Interested parties must rely solely on their own enquiries.



For Sale
By Negotiation

View
ljhooker.com.au/BSPVF2S

Contact
Corinne Guterres
0407 146 252
cguterres@ljhpropertycentre.com.au

LJ Hooker Property Centre
(07) 3286 2500

dual shower head shower

*3 generous bedrooms with built-in robes

*Stunning hostess kitchen featuring waterfall stone bench and counters; Ilve 900mm freestanding, 6-burner gas stove and rangehood; integrated Ilve dishwasher and microwave; large butler's pantry with fridge space (connection for plumbed fridge) and plenty of storage

*Open living/dining area with bi-fold doors to covered patio

*Spacious lounge room

*Main bathroom with separate bath and shower; separate w/c

*Laundry with above and under bench storage cabinets; linen cupboard

*Covered patio with views across to acreage; garden shed

*2-car garage with 2140mm garage door height

*Fujitsu, commercial grade, zoned, reverse cycle, ducted air conditioning

*6.6kw solar; gas hot water system

*Wheelchair friendly doorways and hallways

*Internet - NBN FTTP with battery back-up; Gigabit ethernet switch with 8 points and Cat6 LAN cabling throughout

*Security cameras and alarm system

*Redland Bay State School (primary) and Victoria Point State High catchment

All information contained herein is gathered from sources we consider to be reliable. However, we cannot guarantee or give any warranty about the information provided. Interested parties must solely rely on their own enquiries.

Note: This property is being sold without a price and therefore a price guide cannot be provided. The website may have filtered the property into a price bracket for website functionality purposes only.

More About this Property

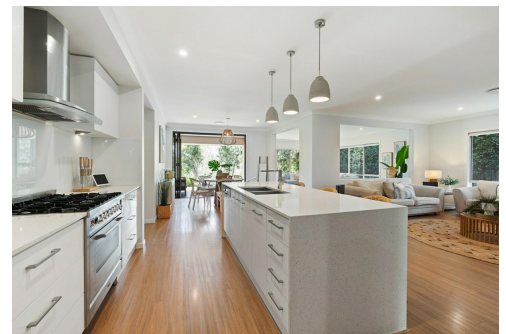
Property ID	BSPVF2S
Property Type	House
Land Area	709 m ²
Including	Air Conditioning

Corinne Guterres 0407 146 252

Independent Contractor - Tonca Pty Ltd | cguterres@ljhpropertycentre.com.au

LJ Hooker Property Centre (07) 3286 2500

152-164 Shore Street West, Raby Bay, Brisbane QLD 4163
propertycentre.ljhooker.com.au | hello@ljhpc.com.au



Disclaimer: All information contained therein is gathered from relevant third parties sources. We cannot guarantee or give any warranty about the information provided. Interested parties must rely solely on their own enquiries.

**LJ Hooker Property Centre
(07) 3286 2500**



112 Balthazar Circuit, Mount Cotton

PLEASE NOTE THIS PLAN IS FOR MARKETING PURPOSES AND IS TO BE USED AS A GUIDE ONLY. ALL MARKINGS, MEASUREMENTS, AREAS, AND LAYOUT ARE INDICATIVE ONLY AND INTERESTED PARTIES SHOULD MAKE THEIR OWN ENQUIRIES BEFORE MAKING ANY DECISIONS. FLOOR COVERINGS INDICATED ARE FOR ILLUSTRATIVE PURPOSES ONLY AND MAY NOT ACCURATELY PORTRAY ACTUAL FLOOR COVERINGS OF THE PROPERTY. NO GUARANTEES ARE MADE REGARDING THE INFORMATION CONTAINED IN THIS PLAN AND NO LIABILITY FOR ANY INACCURACIES IS ACCEPTED.