



9 Zanker Drive, Mount Barker

## **SOLD by Phil & Anna - LJ Hooker**

Potential Plus!

This home is beautifully situated on a fabulous 803sqm corner block presenting a great opportunity for a first home buyer, investor or those looking for a bit more yard with a cosy home. Or for those looking for a project with ample space to extend the home and/or add garaging/shedding. Built in 1993, this home is likely to appeal to a number of demographics.

Featuring a centrally located kitchen, spacious living/dining with split system a/c for added comfort, separate family room with sliding door access to outside, ceiling fans to two of the bedrooms and main living. Plus, the fourth bedroom is large enough to be a multi-function area including rumpus or games room for the kids with sliding door leading to the rear gardens.

Internal features:

- 4 bedrooms
- Centrally located kitchen
- Spacious living/dining
- Separate family room

All information contained therein is gathered from relevant third parties sources. We cannot guarantee or give any warranty about the information provided. Interested parties must rely solely on their own enquiries.

4 1 1

**FOR SALE**

Please Call

**AGENTS**

Phil Chapman

0418 846 052

pchapman@ljhmtbarker.com.au

Anna Locke

0402 474 501

alocke@ljhmtbarker.com.au

**AGENCY**

LJ Hooker Mount Barker

(08) 8398 6300

**LJ Hooker**

- Split system a/c for added comfort
- Ceiling fans to 2 bedrooms & main living

External features:

- Spacious 803sqm corner block
- Single iron garage
- Garden shed
- Lovely gardens

**MORE DETAILS**

Property ID	SX3FDQ
Property Type	House
House Size	135 m2
Land Area	803 m2
Including	Toilets (1)

**Phil Chapman 0418 846 052**

Principal | pchapman@ljhmtbarker.com.au

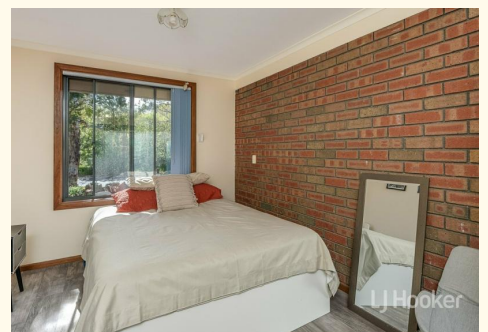
**Anna Locke 0402 474 501**

Sales Consultant | alocke@ljhmtbarker.com.au

**LJ Hooker Mount Barker (08) 8398 6300**

53 Gawler Street, MOUNT BARKER SA 5251

mountbarker.ljhooker.com.au | office@ljhmtbarker.com.au



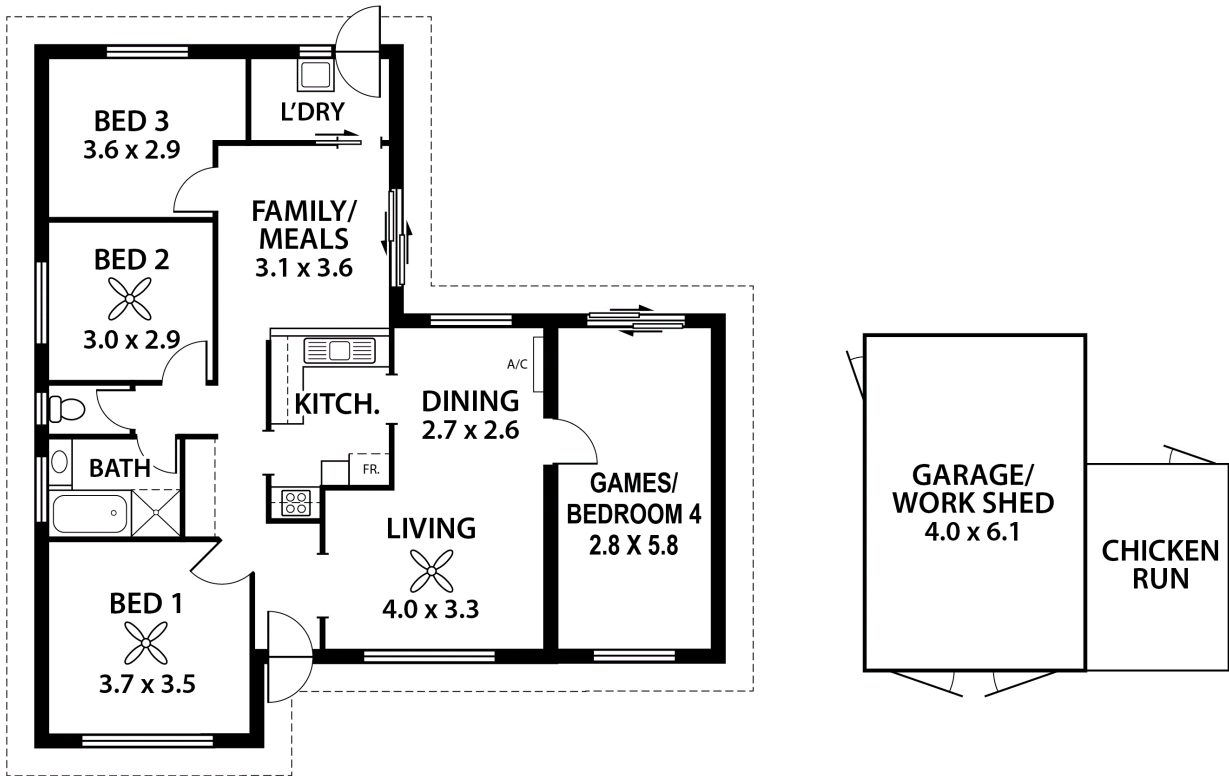
**SHED**  
3.0 x 2.2



RWT

**AREA**

LIVING:	119.8 m <sup>2</sup>
GARAGE/WORK SHED:	24.6 m <sup>2</sup>
SHED:	6.7 m <sup>2</sup>
<b>TOTAL:</b>	<b>151.1 m<sup>2</sup></b>



This floorplan is for illustration purposes only and all measurements are approximate. Any information that is intended to be relied upon should be independently verified. Neither the agent or the illustrators take any responsibility for any omission, wrongful inclusion or typographical error which may occur in this drawing as it is intended as an artist's impression only. While every endeavour has been made to verify the correct details in this floor plan, neither the agent, vendor, nor illustrators accept any responsibility for any error or omission.