

Mount Barker, 9 Symonds Drive

Cute Cottage on Spacious 1,082sqm Allotment with Large Shed

2  1  6 

For Sale
Please Call

View
ljhooker.com.au/14GFFDQ

Contact
Phil Chapman
0418 846 052
pchapman@ljhmtbarker.com.au

Anna Locke
0402 474 501
alocke@ljhmtbarker.com.au

Looking for space without the upkeep of a big home? This property offers the perfect balance of comfort and practicality!

- * Expansive 1,082sqm allotment
- * 4-car carport plus a 6x6m powered garage/workshop with concrete flooring
- * Comfortable 2-bedroom home

Inside, you'll find two generously sized bedrooms, with the master featuring a walk-in robe and direct access to the two-way bathroom. The open-plan kitchen and meals area flow effortlessly into the living space, equipped with split system air-conditioning, a ceiling fan, and a slow-combustion heater-ensuring comfort all year round.

Outside, the four-car carport provides easy access to the 6x6m shed with power and roller



LJ Hooker Mount Barker
(08) 8398 6300

Disclaimer: All information contained therein is gathered from relevant third parties sources. We cannot guarantee or give any warranty about the information provided. Interested parties must rely solely on their own enquiries.

doors. The property also features a rainwater tank, spacious lawns, fruit trees, a garden shed, and a chook house.

Conveniently located near the golf course, bus routes, and with easy access to central Mount Barker.

Huge potential giving the successful buyers a fantastic opportunity to either move straight in, or renovate, or extend (STCC).

More About this Property

| | |
|----------------------|---|
| Property ID | 14GFFDQ |
| Property Type | House |
| Land Area | 1082 m2 |
| Including | Air Conditioning Toilets (1) Workshop Secure Parking Fully Fenced Water Tank |

Phil Chapman 0418 846 052

Principal | pchapman@ljhmtbarker.com.au

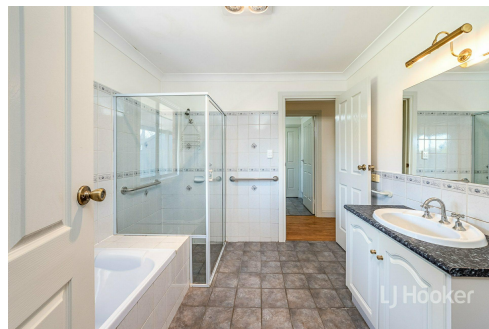
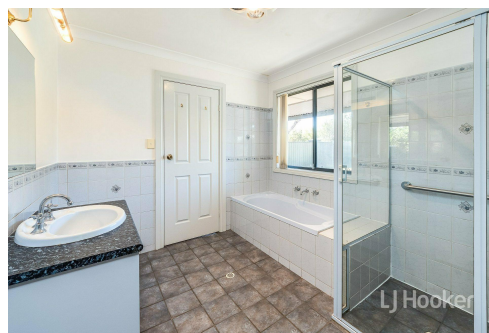
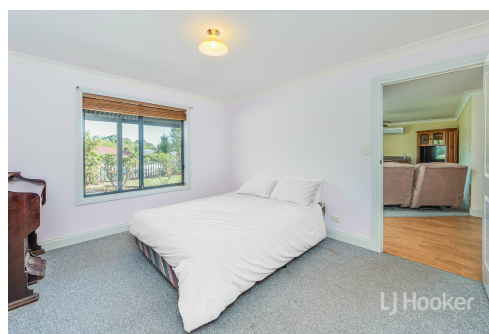
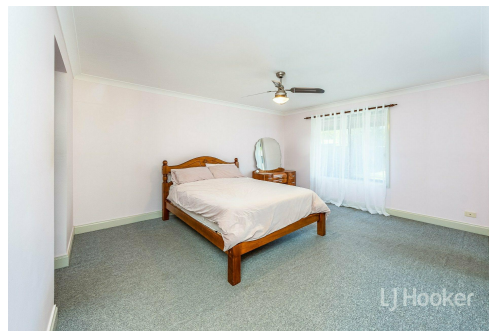
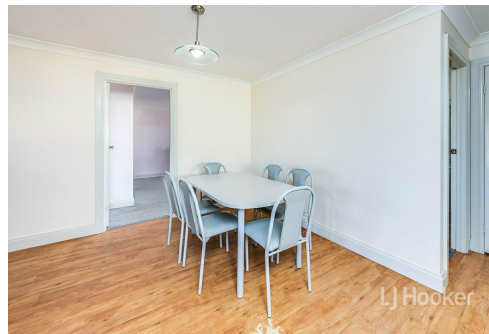
Anna Locke 0402 474 501

Sales Consultant | alocke@ljhmtbarker.com.au

LJ Hooker Mount Barker (08) 8398 6300

53 Gawler Street, MOUNT BARKER SA 5251

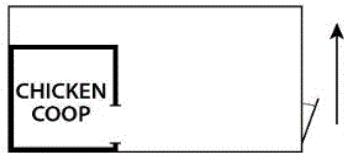
mountbarker.ljhooker.com.au | office@ljhmtbarker.com.au



Disclaimer: All information contained therein is gathered from relevant third parties sources.

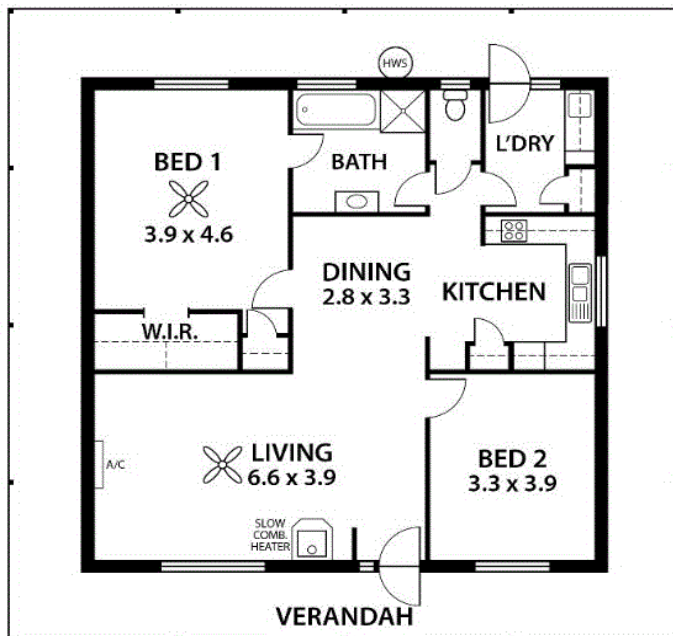
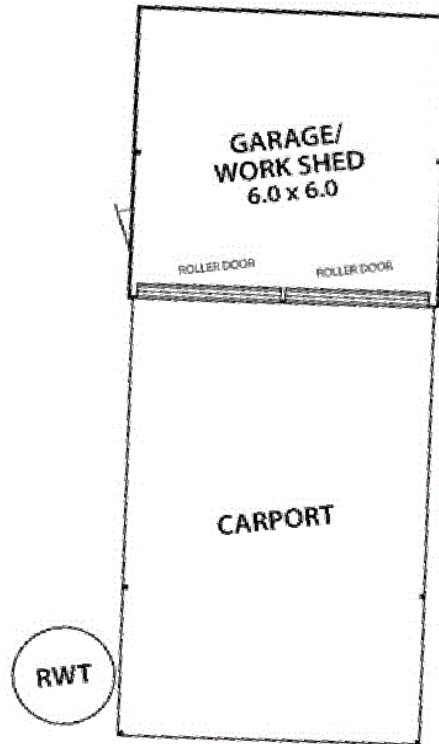
We cannot guarantee or give any warranty about the information provided. Interested parties must rely solely on their own enquiries.

**LJ Hooker Mount Barker
(08) 8398 6300**



AREA

| | |
|---------------------|----------------------------|
| LIVING: | 110.7 m ² |
| VERANDAH: | 69.7 m ² |
| GARAGE / WORK SHED: | 35.9 m ² |
| CARPORT: | 53.0 m ² |
| SHED: | 6.0 m ² |
| TOTAL: | 275.3 m² |



This floorplan is for illustration purposes only and all measurements are approximate. Any information that is intended to be relied upon should be independently verified. Neither the agent or the illustrators take any responsibility for any omission, wrongful inclusion or typographical error which may occur in this drawing as it is intended as an artist's impression only. While every endeavour has been made to verify the correct details in this floor plan, neither the agent, vendor, nor illustrators accept any responsibility for any error or omission.