

Mount Barker, 20 Fry Street

Get Ready to Reno!

Not for the faint hearted - this amazing 962sqm block with 1980s built home sits opposite a reserve in a tightly held, quiet leafy area.

Almost at land value the home has already had the kitchen and all flooring removed and is now ready for someone to renovate before moving in! The bathroom, separate toilet and laundry are all still original. The potential to value add to this home is endless.

There is also a great studio set behind the long carport, perfect as an extra bedroom, office, rumpus room or secure storage shed.

The huge block is nearly level and would make a fabulous opportunity to create a large private garden space by the right person, a fabulous area for both kids and pets alike.

There is also a large pergola that runs the full length of the home plus a shed behind the



For Sale
Please Call

View
ljhooker.com.au/KXUFDQ

Contact
Phil Chapman
0418 846 052
pchapman@ljhmtbarker.com.au

Anna Locke
0402 474 501
aolcke@ljhmtbarker.com.au



LJ Hooker Mount Barker
(08) 8398 6300

Disclaimer: All information contained therein is gathered from relevant third parties sources. We cannot guarantee or give any warranty about the information provided. Interested parties must rely solely on their own enquiries.

studio and a paved garden shed.

Best Offers by 3rd December at 12noon (USP)

More About this Property

Property ID	KXUFDQ
Property Type	House
Land Area	962 m2
Including	Air Conditioning Toilets (1) Outdoor Entertaining Workshop Fully Fenced

Phil Chapman 0418 846 052

Principal | pchapman@ljhmtbarker.com.au

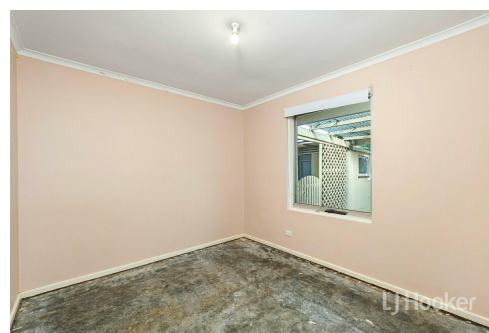
Anna Locke 0402 474 501

Sales Consultant | alocke@ljhmtbarker.com.au

LJ Hooker Mount Barker (08) 8398 6300

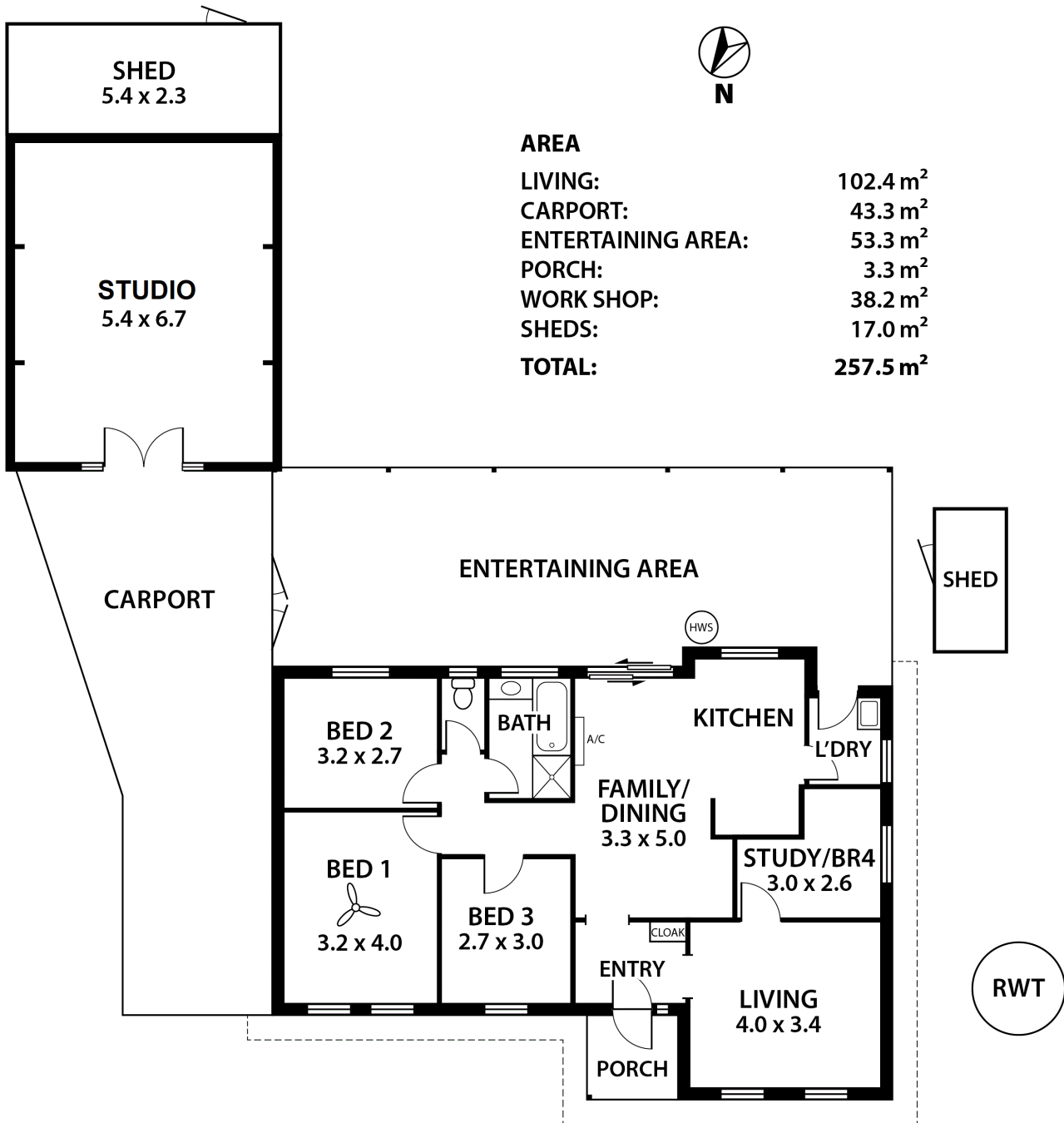
53 Gawler Street, MOUNT BARKER SA 5251

mountbarker.ljhooker.com.au | office@ljhmtbarker.com.au



**LJ Hooker Mount Barker
(08) 8398 6300**

Disclaimer: All information contained therein is gathered from relevant third parties sources. We cannot guarantee or give any warranty about the information provided. Interested parties must rely solely on their own enquiries.



This floorplan is for illustration purposes only and all measurements are approximate. Any information that is intended to be relied upon should be independently verified. Neither the agent or the illustrators take any responsibility for any omission, wrongful inclusion or typographical error which may occur in this drawing as it is intended as an artist's impression only. While every endeavour has been made to verify the correct details in this floor plan, neither the agent, vendor, nor illustrators accept any responsibility for any error or omission.