



Mount Barker, 18 Scarborough Way

Spacious Family Entertainer in a Tranquil Haven

Situated on a stunning tree-lined street in the heart Mountain Glen Estate surrounded by other well-maintained properties this home is certainly a family favourite with plenty of spacious living on offer and a serene outdoor ambiance, this one is sure to tick all the boxes!

Filled with natural sunlight the formal living area an ideal setting for hosting guests or simply enjoying a moment of solitude with a great book. The welcoming atmosphere doesn't stop there, the open plan living and dining area creates an inviting space when entertaining and seamlessly merges out onto the stunning outdoor pergola area. The kitchen provides an abundance of cupboard and bench space making meal preparation a breeze and offers stainless steel appliances. All bedrooms feature built-in robes with the main bedroom offering a walk-in robe and ensuite. The timeless neutral bathroom has a full-sized bath,

3 2 2

For Sale

UNDER CONTRACT

View

ljhooker.com.au/PF9GW0

Contact

Jarad Henry

0418 842 701

jarad@ljhglenelgbrighton.com.au

Trinity Egglestone

trinity@ljhglenelgbrighton.com.au



LJ Hooker Glenelg | Brighton
(08) 8294 6000

Disclaimer: All information contained therein is gathered from relevant third parties sources. We cannot guarantee or give any warranty about the information provided. Interested parties must rely solely on their own enquiries.

shower and single vanity. The laundry includes extra storage space and there is a separate water closet s well.

Step outside to your very own private sanctuary where you'll find yourself surrounded by a canopy of mature trees with a lush green lawn area providing a great space for playing with your kids or for your furry friends and a garden shed to hold all the gardening equipment. Car accommodation includes a double garage with drive-through access to the rear undercover pergola area.

The location is simply superb with backing onto the Laratinga Wetlands where you can enjoy the serenity of the cycling track and within walking distance to the Aston Hills Golf Club. Just a short drive to the main hustle and bustle of Mount Barker where you will find plenty of shopping amenities, cafes and restaurants, health facilities and schooling options.

*Please note that this property is currently tenanted to July 2024

Property Details:

Council: Mount Barker District Council

Land Size: 492sqm

House Size: 202sqm

Year Built: 2004

For further information please contact Jarad Henry or Trinity Egglestone.

Visit glenelgbrighton.ljhooker.com.au to view other LJ Hooker Glenelg | Brighton Listings.

Disclaimer: Neither the Agent nor the Vendor accept any liability for any error or omission in this advertisement.

Any prospective purchaser should not rely solely on 3rd party information providers to confirm the details of this property or land and are advised to enquire directly with the agent in order to review the certificate of title and local government details provided with the completed Form 1 vendor statement.



LJ Hooker Glenelg | Brighton
(08) 8294 6000

Disclaimer: All information contained therein is gathered from relevant third parties sources. We cannot guarantee or give any warranty about the information provided. Interested parties must rely solely on their own enquiries.

More About this Property

Property ID PF9GW0

Property Type House

House Size 202 m²

Land Area 492 m²

Jarad Henry

Principal & Sales Consultant | jarad@ljhglenelgbrighton.com.au

Trinity Egglestone

Sales Associate | trinity@ljhglenelgbrighton.com.au

LJ Hooker Glenelg | Brighton (08) 8294 6000

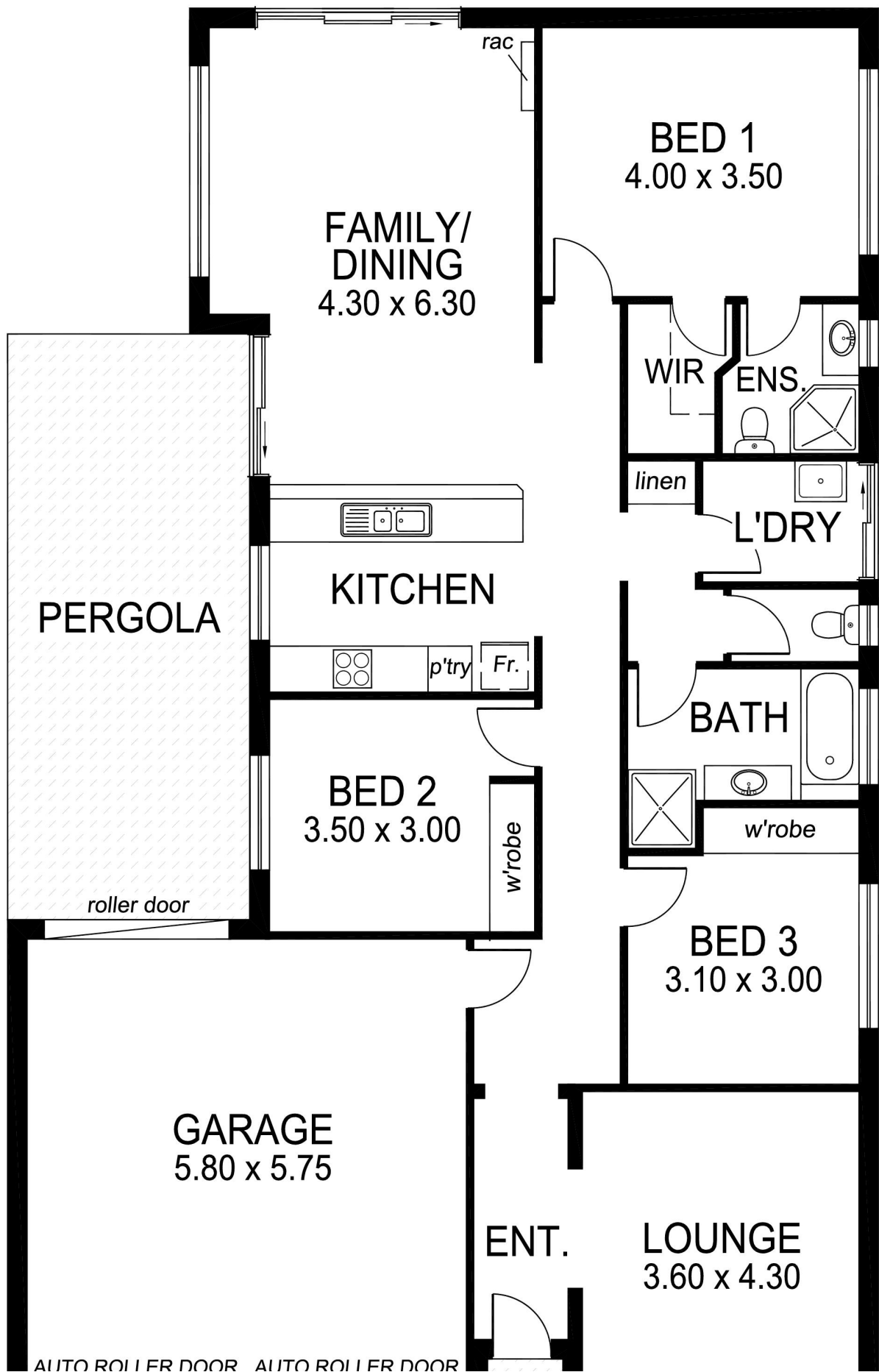
76 Oaklands Road, SOMERTON PARK SA 5044

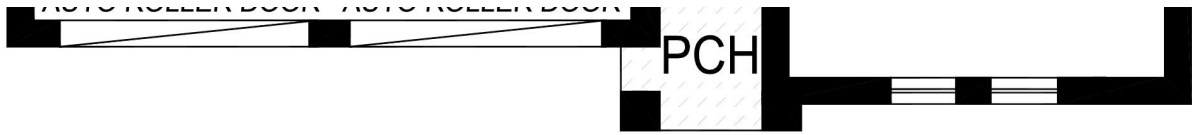
glenelgbrighton.ljhooker.com.au | rebecca@ljhglenelgbrighton.com.au



LJ Hooker Glenelg | Brighton
(08) 8294 6000

Disclaimer: All information contained therein is gathered from relevant third parties sources. We cannot guarantee or give any warranty about the information provided. Interested parties must rely solely on their own enquiries.





TOTAL AREA:	202.08m ² /21.72sqs
(Estimate only)	(incl. porch, pergola & garage)

This drawing is for illustration purposes only.
All measurements are approximate only and information
intended to be relied upon should be independently verified.