



## Moulden, 49 Schombacher Circuit

Affordable living on a full sized block

\* Sold from our extensive data base prior to being advertised.

Very tidy and well presented this affordable home sits on a large block with gardens around the fence line and loads of lawn for the kids to play on. The home includes a number of updates making the home great value in the area.

Features includes:

- \* Fully fenced yard
- \* Solar panels for free electricity from the sun
- \* Solar hot water
- \* Fully tiled throughout
- \* Air cons in the bedrooms
- \* Security screens on windows and doors



**For Sale**  
\$492,500

**View**  
[ljhooker.com.au/5D8VF2X](http://ljhooker.com.au/5D8VF2X)

**Contact**  
**Jennifer Wardell**  
0447 007 474  
[jwardell@ljhookerdarwin.com.au](mailto:jwardell@ljhookerdarwin.com.au)  
**Robert Higgins**  
0418 184 754  
[rhiggins@ljhookerdarwin.com.au](mailto:rhiggins@ljhookerdarwin.com.au)



**LJ Hooker Darwin**  
**(08) 8924 0900**

**Disclaimer:** All information contained therein is gathered from relevant third parties sources. We cannot guarantee or give any warranty about the information provided. Interested parties must rely solely on their own enquiries.

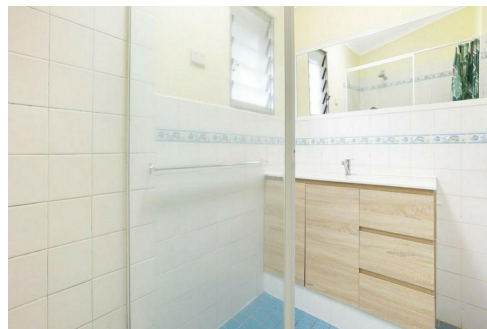
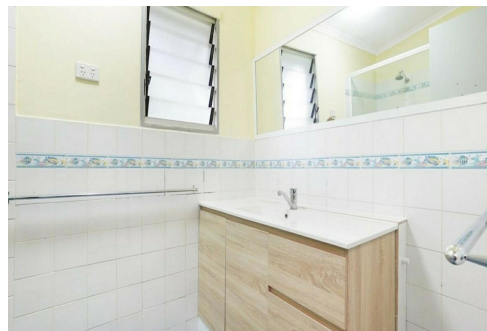
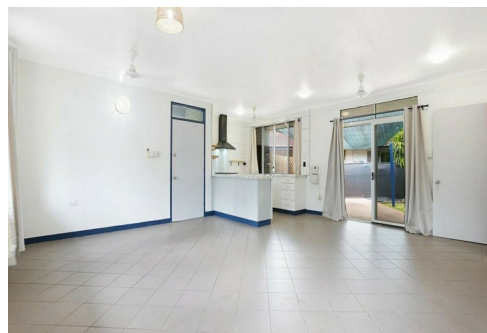
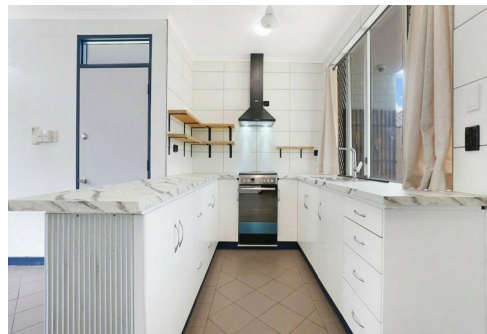
Located close to Woodroffe Primary School, Bellamack commercial precinct and the Moulden shops there is plenty of amenity close by.

## More About this Property

<b>Property ID</b>	5D8VF2X
<b>Property Type</b>	House

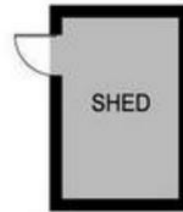
**Jennifer Wardell 0447 007 474**  
Sales Representative | [jwardell@ljhookerdarwin.com.au](mailto:jwardell@ljhookerdarwin.com.au)  
**Robert Higgins 0418 184 754**  
Project Planning and Marketing | [rhiggins@ljhookerdarwin.com.au](mailto:rhiggins@ljhookerdarwin.com.au)

**LJ Hooker Darwin (08) 8924 0900**  
Shop 1/25 Parap Road, PARAP NT 0820  
[darwin.ljhooker.com.au](http://darwin.ljhooker.com.au) | [reception@ljhookerdarwin.com.au](mailto:reception@ljhookerdarwin.com.au)



**LJ Hooker Darwin**  
**(08) 8924 0900**

**Disclaimer:** All information contained therein is gathered from relevant third parties sources. We cannot guarantee or give any warranty about the information provided. Interested parties must rely solely on their own enquiries.



49 SCHOMBACHER CIRCUIT, MOULDEN