



## Moulden, 19 Bonson Terrace

Great value close to sports amenity

\* Sold from our extensive data base prior to being advertised.

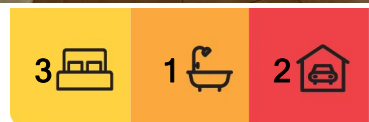
Neat and tidy entry level home that has been freshly painted and is well presented. The yard is fully fenced and includes shaded car parking for 2 cars. The yard is a blank canvas looking for someone to add their own personality and there is plenty of room for future sheds or pools.

Features include:

- \* Fully tiled throughout
- \* Air conditioned bedrooms and living room.
- \* Freshly painted inside and out
- \* Shaded parking for 2 cars
- \* Tiled roof to keep the noise down during the wet season



**Disclaimer:** All information contained therein is gathered from relevant third parties sources. We cannot guarantee or give any warranty about the information provided. Interested parties must rely solely on their own enquiries.



**For Sale**  
\$492,500

**View**  
[ljhooker.com.au/5D8ZF2X](http://ljhooker.com.au/5D8ZF2X)

**Contact**  
**Jennifer Wardell**  
0447 007 474  
[jwardell@ljhookerdarwin.com.au](mailto:jwardell@ljhookerdarwin.com.au)  
**Robert Higgins**  
0418 184 754  
[rhiggins@ljhookerdarwin.com.au](mailto:rhiggins@ljhookerdarwin.com.au)

**LJ Hooker Darwin**  
(08) 8924 0900

- \* Solar hot water system
- \* Fully fenced yard

The location of this property is fantastic for those with kids being only 100m from a massive recreational precinct which includes the Palmerston Netball club, Palmerston tennis Club, Palmerton YMCA and he recently redeveloped Pool and aquapark.

## More About this Property

<b>Property ID</b>	5D8ZF2X
<b>Property Type</b>	House
<b>Land Area</b>	804 m2

**Jennifer Wardell 0447 007 474**

Sales Representative | [jwardell@ljhookerdarwin.com.au](mailto:jwardell@ljhookerdarwin.com.au)

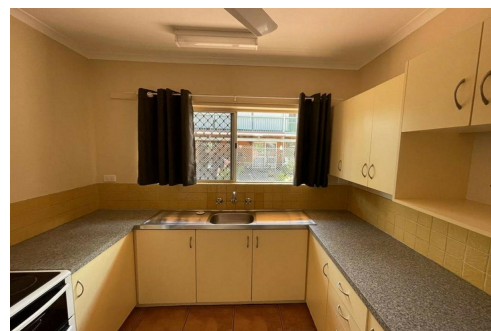
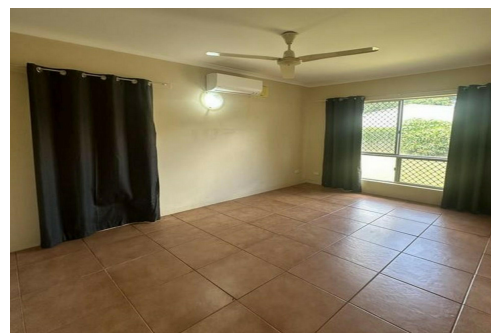
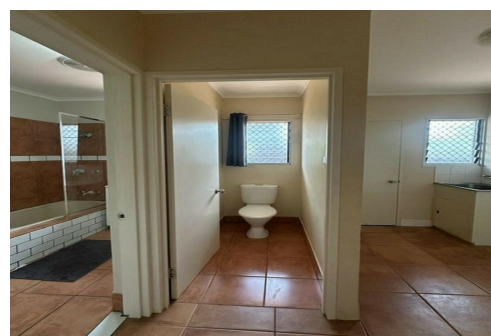
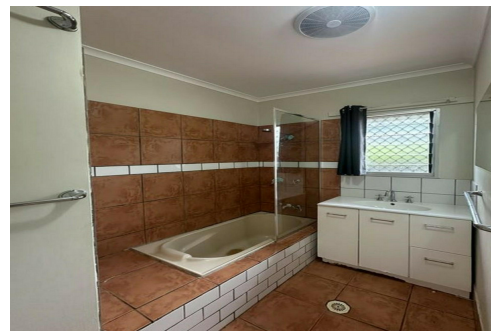
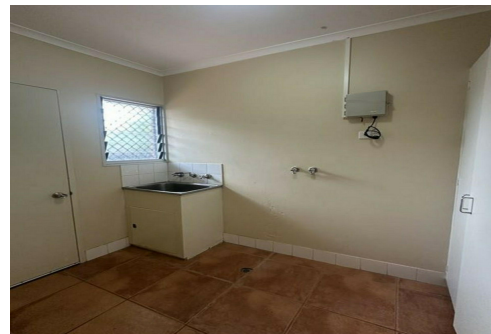
**Robert Higgins 0418 184 754**

Project Planning and Marketing | [rhiggins@ljhookerdarwin.com.au](mailto:rhiggins@ljhookerdarwin.com.au)

**LJ Hooker Darwin (08) 8924 0900**

Shop 1/25 Parap Road, PARAP NT 0820

[darwin.ljhooker.com.au](http://darwin.ljhooker.com.au) | [reception@ljhookerdarwin.com.au](mailto:reception@ljhookerdarwin.com.au)



**Disclaimer:** All information contained therein is gathered from relevant third parties sources. We cannot guarantee or give any warranty about the information provided. Interested parties must rely solely on their own enquiries.

**LJ Hooker Darwin**  
**(08) 8924 0900**