



1/214 South Head Road, Moruya Heads

Coastal Townhouse

Positioned in the heart of Moruya Heads, this well-presented townhouse offers low-maintenance living, just moments from the river and beaches.

The home features three bedrooms with built-ins, including a generous master with ensuite and built-in robes. Comfort is assured year-round with air conditioning and ceiling fans.

The functional floor plan includes open plan lounge and dining, a practical kitchen with good storage and an additional sitting area upstairs.

The private courtyard is spacious, offering secure outdoor space without the upkeep. A single garage with internal access adds convenience.

From the property, the footpath takes you along the river through to the headland and main beach, making it easy to enjoy everything Moruya Heads has to offer. Moruya township is only minutes (4.1km) away for shopping, schools and services.

A solid coastal option in a tightly held location, suitable for owner occupiers, downsizers, or investors.

3 2 1

FOR SALE

\$729,000

VIEW

By Appointment

AGENTS

James Hamilton
0408 135 553
jhamilton.moruya@ljhooker.com.au

AGENCY

LJ Hooker Moruya
(02) 4474 4433

All information contained therein is gathered from relevant third parties sources.
We cannot guarantee or give any warranty about the information provided.
Interested parties must rely solely on their own enquiries.



- Rates: \$2,793.70 pa
- Zoning: R2 Low Density

MORE DETAILS

Property ID	ENUGT2
Property Type	House
Including	Air Conditioning
	Built-in-Robes

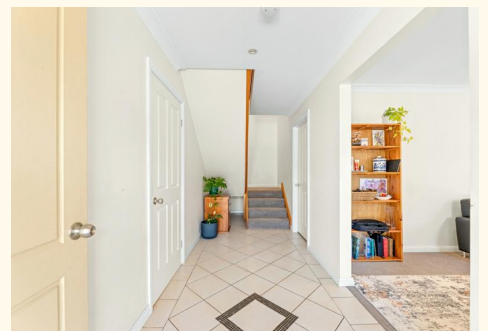
James Hamilton 0408 135 553

Licensed Real Estate Agent | jhamilton.moruya@ljhooker.com.au

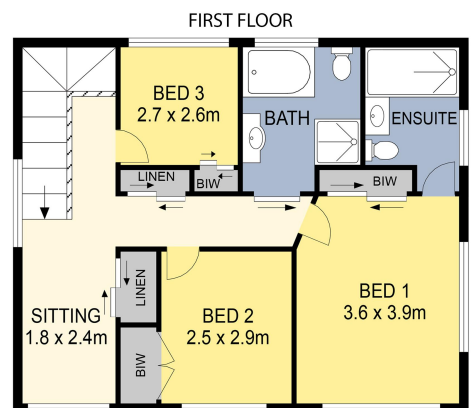
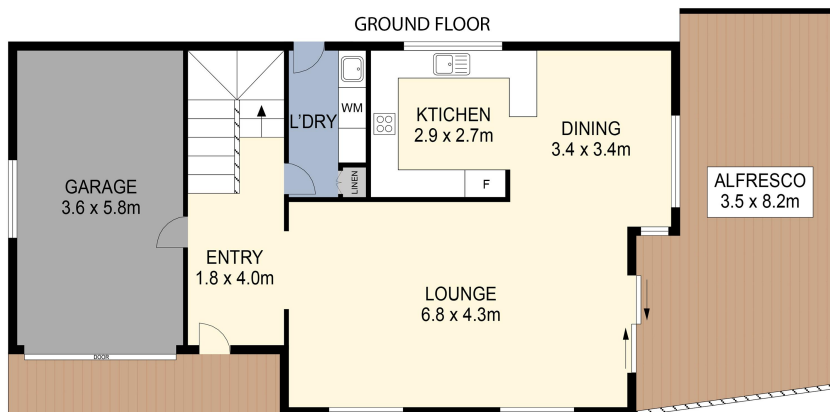
LJ Hooker Moruya (02) 4474 4433

2/45 Vulcan Street, MORUYA NSW 2537

moruya.ljhooker.com.au | moruya@ljhooker.com.au



All information contained therein is gathered from relevant third parties sources.
We cannot guarantee or give any warranty about the information provided.
Interested parties must rely solely on their own enquiries.



PLANS SHOWN ONLY INDICATIVE OF LAYOUT. DIMENSIONS ARE APPROXIMATE.

TOTAL: 205m²



1/214 South Head Road, Moruya

LJ Hooker