



210-212 South Head Road, Moruya Heads

## Bush Retreat




This charming property is nestled in serene bushland setting just 2.8 km from the beach and 1 km from the boat ramp.

This inviting home features three cozy loft-style bedrooms and an open-plan living area that seamlessly connects to shaded verandahs, offering a perfect spot to enjoy the soothing sights and sounds of nature. With 1.5 bathrooms and a delightful timber construction, this property exudes warmth and character.

In addition to the main residence, you'll find a 70 m<sup>2</sup> detached garage/shed, ideal for storing your boat and other essentials. Set on a generous 1.03 ha, this property perfectly blends the tranquility of nature with the convenience of nearby beaches and recreational facilities.

Experience the best of both worlds in this enchanting hideaway.

If you would like more information please enquire through [realestate.com](https://www.realestate.com) or [domain.com](https://www.domain.com) and they will be automatically sent for your perusal.

3  1  3 

**FOR SALE**  
NEW PRICE \$780,000

### AGENTS

James Hamilton  
0408 135 553  
[jhamilton.moruya@ljhooker.com.au](mailto:jhamilton.moruya@ljhooker.com.au)

### AGENCY

LJ Hooker Moruya  
(02) 4474 4433

All information contained therein is gathered from relevant third parties sources.  
We cannot guarantee or give any warranty about the information provided.  
Interested parties must rely solely on their own enquiries.

 **LJ Hooker**

## MORE DETAILS

Property ID ECRGT2  
Property Type House  
Land Area 1.03 hectare  
Including Air Conditioning

**James Hamilton 0408 135 553**

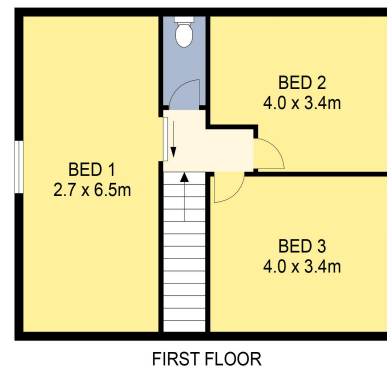
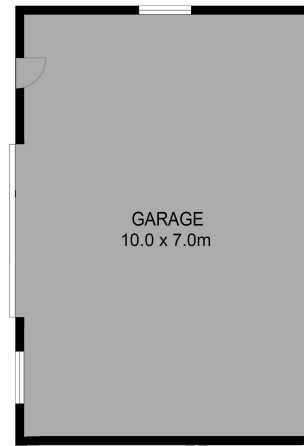
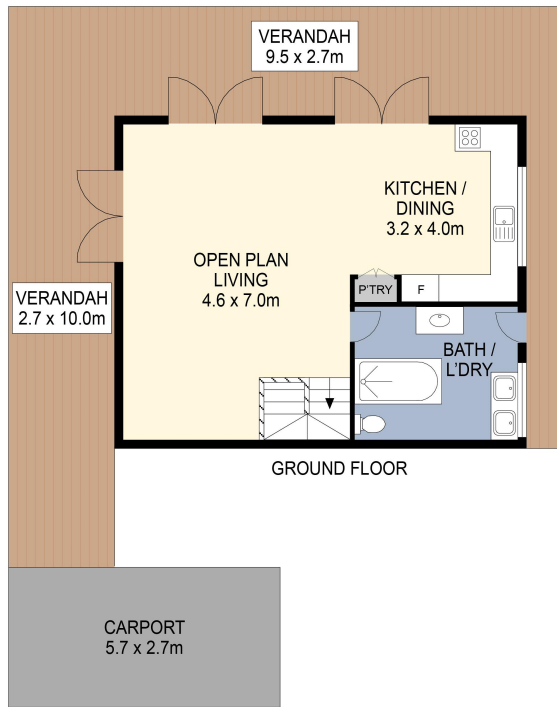
Licensed Real Estate Agent | [jhamilton.moruya@ljhooker.com.au](mailto:jhamilton.moruya@ljhooker.com.au)

**LJ Hooker Moruya (02) 4474 4433**

2/45 Vulcan Street, MORUYA NSW 2537  
[moruya.ljhooker.com.au](http://moruya.ljhooker.com.au) | [moruya@ljhooker.com.au](mailto:moruya@ljhooker.com.au)



All information contained therein is gathered from relevant third parties sources.  
We cannot guarantee or give any warranty about the information provided.  
Interested parties must rely solely on their own enquiries.



PLANS SHOWN ONLY INDICATIVE OF LAYOUT. DIMENSIONS ARE APPROXIMATE.

210-212 South Head Road, Moruya Heads

 LJ Hooker

All information contained therein is gathered from relevant third parties sources.  
We cannot guarantee or give any warranty about the information provided.  
Interested parties must rely solely on their own enquiries.

 LJ Hooker