



9/48 Edwin Street, Mortlake

Luxurious, Full-Brick Waterside Retreat.


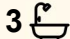
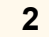
Set in the exclusive waterside Kingfisher Cove complex, this luxurious full-brick townhouse offers an exceptional blend of elegance, space, and versatility - the perfect retreat for modern family living or executive comfort.

Featuring a sundrenched floorplan with four generous bedrooms - two with ensuite bathrooms - all with built in wardrobes. Private courtyards featured on three levels, the residence unfolds over a spacious, flexible floor plan designed to suit your lifestyle.

A private entry to the ground floor creates a versatile zone ideal for a home office, guest suite, or in-law accommodation, offering true flexibility and independence.

The huge refined lounge and dining area with towering ceilings are framed by bifold doors that seamlessly open to an entertainer's courtyard, perfect for indoor-outdoor living. A modern stone kitchen appointed with premium stainless steel appliances provides a stylish heart to the home.

Enjoy the breathtaking rooftop patio with a leafy outlook across the

4  3  2 

AUCTION
Sat 18th Apr @ 3:30PM

VIEW
By Appointment

AGENTS
Joe Murania
0416 044 267
joe@ljhburwood.com.au

AGENCY
LJ Hooker Burwood
(02) 9745 3999

All information contained therein is gathered from relevant third parties sources.
We cannot guarantee or give any warranty about the information provided.
Interested parties must rely solely on their own enquiries.

 **LJ Hooker**

bay, ideal for sunset gatherings or peaceful relaxation. The property also features a double basement garage with internal access, ensuring convenience and security.

Located on the edge of Yaralla Bay within easy walking distance to Breakfast Point shops, cafes, local schools and amenities, this is a rare opportunity to secure a waterside lifestyle of luxury, comfort, and connection.

Total area - 336m2

MORE DETAILS

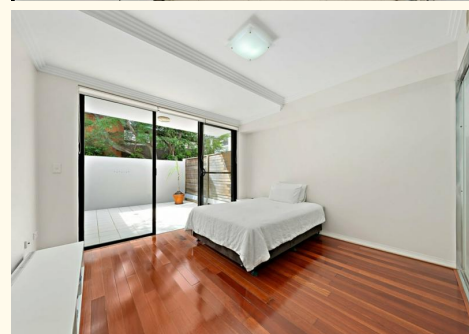
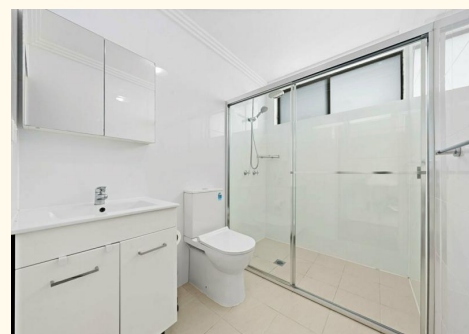
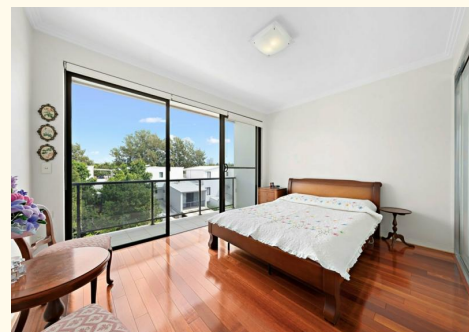
Property ID	129MF8R
Property Type	Townhouse
Land Area	336 m2

Joe Murania 0416 044 267

Director | Sales Manager | joe@ljhburwood.com.au

LJ Hooker Burwood (02) 9745 3999

Shop 2/27-29 Burwood Road, BURWOOD NSW 2134
burwood.ljhooker.com.au | burwood@ljhburwood.com.au





9/48 Edwin Street, Mortlake



DISCLAIMER: THIS FLOOR PLAN IS INTENDED AS A GUIDE ONLY. IT DOES NOT CONSTITUTE PART OF ANY LEGAL DOCUMENTS. ALL DIMENSIONS ARE APPROXIMATE, ACTUAL MAY VARY. NO LIABILITY ACCEPTED. YOU MUST SEEK ADVICE FROM YOUR SOLICITOR. FLOOR PLAN BY WWW.MCPixelsAU.COM