



Morrinsville, 5 Maple Place

Elevated & Beautiful

Set proudly on an elevated site in sought after Holmwood Park, this stunning family home offers a perfect mix of style, comfort and modern convenience. With immaculate presentation inside & out - it's ready for you to move in and enjoy.

- 4 spacious double bedrooms. The master bedroom has an ensuite and walk-in wardrobe.
- Open plan living - allowing seamless flow between the kitchen and living spaces. The two living areas boast entertaining or having quiet family time. Stacker doors allow the living areas to spill out to the private garden. The bonus of having an office or hobby room is magic!

Located in a peaceful & family-friendly cul-de-sac, this beautifully presented home with well maintained gardens offers convenience & comfort, all within easy reach of schools, parks & Morrinsville's amenities.

Lovely homes like this one don't last long on the market - make 5 Maple Place your forever home!



Disclaimer: All information contained therein is gathered from relevant third parties sources. We cannot guarantee or give any warranty about the information provided. Interested parties must rely solely on their own enquiries.

4

2

2

For Sale
\$979,000

View
[ljhooker.co.nz/FPNGEW](https://l.jhooker.co.nz/FPNGEW)

Contact
Julie Wood
021 815 192
juliewood@ljhmo.co.nz

LJ Hooker Morrinsville
(07) 889 8015
Central Waikato Realty Limited

Call Julie today to view!

More About this Property

Property ID	FPNGEW
Property Type	House
House Size	240 m ²
Land Area	800 m ²
Licensed Real Estate Agents (REAA2008)	

Julie Wood 021 815 192

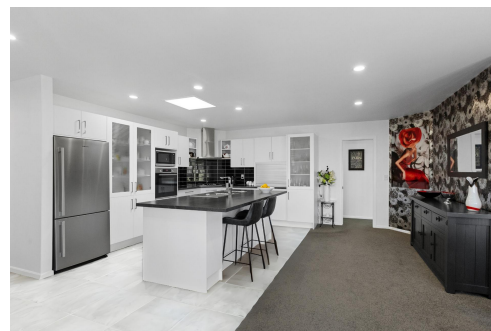
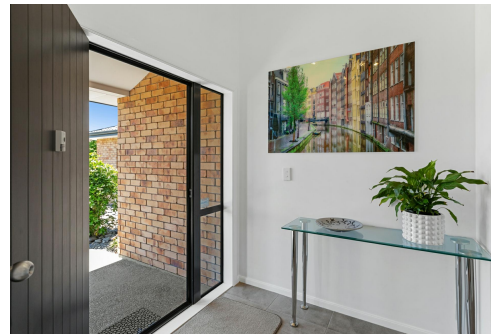
Residential Sales | juliewood@ljhmo.co.nz

LJ Hooker Morrinsville (07) 889 8015

Central Waikato Realty Limited

49 Studholme Street, MORRINSVILLE 3300

morrinsville.ljhooker.co.nz | office@ljhmo.co.nz



LJ Hooker Morrinsville
(07) 889 8015

Central Waikato Realty Limited

Disclaimer: All information contained therein is gathered from relevant third parties sources.

We cannot guarantee or give any warranty about the information provided. Interested parties must rely solely on their own enquiries.