



26 Carson Street, Mornington

Sunny Mornington Treasure



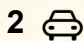
Positioned in the highly sought-after Mornington location, this appealing three bedroom brick home presents a fantastic opportunity to step onto the property ladder, downsize with ease, or expand your investment portfolio.

Enjoying excellent sun exposure, this home is filled with natural light and offers a warm, welcoming interior. The generous open-plan living, kitchen and dining area blends both comfort and practicality, creating a versatile space for relaxed everyday living.

Downstairs, a secure basement garage leads into a spacious workshop or hobby room, perfect for tradespeople, creatives, or simply anyone needing extra storage. Additionally, off-street parking for up to three vehicles is an added bonus, and a rare find in such a central location.

Located just minutes from Mornington's shopping centre, local schools, parks and public transport, this home delivers unmatched convenience to everything you need.

Don't miss your opportunity to secure a solid, sunny home in a prime central location!

3  1  2 

FOR SALE

Enquiries Over \$585,000

AGENTS

Geraldine Hermens

027 473 0922

Geraldine@ljhdunedin.co.nz

Cherish Thom

cherish@ljhdunedin.co.nz

AGENCY

LJ Hooker Dunedin

(03) 470 1370

Wayne Graham Realty Ltd

All information contained therein is gathered from relevant third parties sources.
We cannot guarantee or give any warranty about the information provided.
Interested parties must rely solely on their own enquiries.

 **LJ Hooker**

MORE DETAILS

Property ID 3PZ5GDS
Property Type House
House Size 100 m²
Land Area 498 m²
Licensed Real Estate Agents (REAA2008)

Geraldine Hermens 027 473 0922

Licensee | Geraldine@ljhdunedin.co.nz

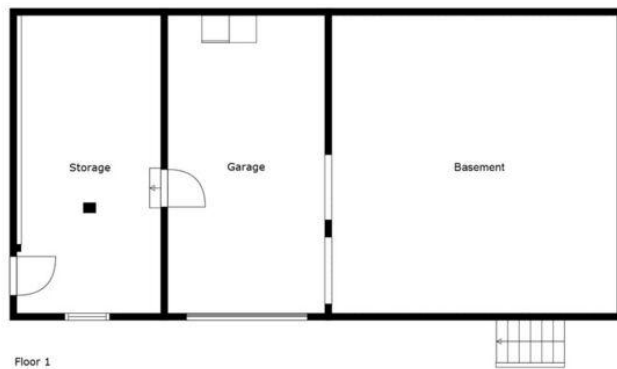
Cherish Thom

Sales Associate to Jason Hynes & Lawrence Schaumann |
cherish@ljhdunedin.co.nz

LJ Hooker Dunedin (03) 470 1370

Wayne Graham Realty Ltd
63 Musselburgh Rise, DUNEDIN 9013
dunedin.ljhooker.co.nz | dunedin@ljhdunedin.co.nz





Sizes And Dimensions Are Approximate, Actual May Vary

