






22/18 Elwell Street, Morningside

3  1  1 

Spacious, Serene & Convenient —Townhouse Living in Richmond Grove

FOR SALE
UNDER OFFER

AGENTS

Courtney Brown
0410 232 200
cbrown@ljhpropertycentre.com.au

AGENCY

LJ Hooker Property Centre
(07) 3286 2500

Set in the highly regarded Richmond Grove complex, this beautifully presented three-bedroom townhouse offers the ideal blend of comfort, privacy, and location. Whether you're looking for your first home, downsizing, or investing in a high-demand area, this property delivers effortless living in the heart of Morningside.

Property Highlights:

- Three generous bedrooms, all recently painted
- Master bedroom features a private balcony with a leafy outlook and large wardrobe
- Well-maintained main bathroom with separate shower
- All bedrooms recently painted
- Additional powder room on the ground level for convenience
- Light-filled open-plan living and dining area
- New blinds throughout
- Neat and functional kitchen with a nice bright leafy outlook from the sink
- Private, fully fenced courtyard —ideal for relaxing or entertaining
- Under-stair storage and laundry located in the garage with direct

All information contained therein is gathered from relevant third parties sources.
We cannot guarantee or give any warranty about the information provided.
Interested parties must rely solely on their own enquiries.

 **LJ Hooker**

- access to the clothesline in the backyard
- Single lock-up garage with internal access

About Richmond Grove:

Tucked away in a quiet, well-kept complex, Richmond Grove is known for its peaceful atmosphere, leafy surrounds, and welcoming community. With beautifully landscaped gardens and ample visitor parking, it offers a low-maintenance lifestyle in a secure and central location.

Located just 6km from Brisbane CBD, Morningside offers exceptional connectivity and lifestyle perks:

- Walk to public transport, including Morningside train station and local buses
- Minutes to Morningside Central, cafes, gyms, and shops
- Short drive to Oxford Street, Bulimba, or the Gateway Motorway
- Surrounded by local parks, schools, and lifestyle amenities

Approximate Fees:

Council Rates: \$500 per quarter

Water Rates: \$350 per quarter

Body Corporate Fees: \$815 per quarter

This is your chance to secure a quality home in a sought-after lifestyle suburb, with nothing to do but move in and enjoy this quiet complex. Properties with this much to offer don't last long.

Contact Courtney Brown today to arrange a private viewing or request more information.

Disclaimer: We have in preparing this advertisement used our best endeavours to ensure the information contained is true and accurate but make no representation or warranty as to the accuracy or completeness of the information relating to this property. Prospective purchasers should make their own enquiries in respect of any property or information in this advertisement. We accept no responsibility and disclaim all liability in respect to any errors, omissions, inaccuracies, or misstatements contained therein.

Note: This property is being sold without a price and therefore a price guide cannot be provided. The website may have filtered the property into a price bracket for website functionality purposes only.

MORE DETAILS

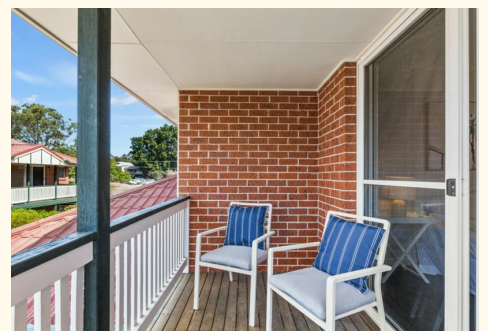
Property ID	BTMKF2S
Property Type	Townhouse
Land Area	130 m2
Including	Courtyard

Courtney Brown 0410 232 200

Independent Contractor - All About Selling Pty Ltd |
cbrown@ljhpropertycentre.com.au

LJ Hooker Property Centre (07) 3286 2500

152-164 Shore St West, Raby Bay, Brisbane Qld 4163
propertycentre.ljhooker.com.au | hello@ljhpc.com.au





22/18 Elwell Street, Morningside

PLEASE NOTE THIS PLAN IS FOR MARKETING PURPOSES AND IS TO BE USED AS A GUIDE ONLY. ALL MARKINGS, MEASUREMENTS, AREAS, AND LAYOUT ARE INDICATIVE ONLY AND INTERESTED PARTIES SHOULD MAKE THEIR OWN ENQUIRIES BEFORE MAKING ANY DECISIONS. FLOOR COVERINGS INDICATED ARE FOR ILLUSTRATIVE PURPOSES ONLY AND MAY NOT ACCURATELY PORTRAY ACTUAL FLOOR COVERINGS OF THE PROPERTY. NO GUARANTEES ARE MADE REGARDING THE INFORMATION CONTAINED IN THIS PLAN AND NO LIABILITY FOR ANY INACCURACIES IS ACCEPTED.