



14 Bona Crescent, Morning Bay

## North-East Facing Deep Waterfront - The Ultimate Pittwater Position!


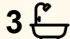
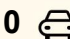
Gently rolling, lush lawns flow from this classic mid-century beach shack to the inviting private sandy beach and sparkling crystal-clear deep water. So deep the pontoon allows for a 50' boat at all tides.

Clean, simple lines, large windows, and an open floor plan intent on making indoor and outdoor living spaces complement each other with ease.

Morning Bay is truly paradise; locals know it as Towler's Bay. It's a tightly held and revered position on Pittwater known for its outstanding views, abundance of sunshine and year-round tranquility. Set in the heart of the national park only one hour from Sydney.

Be prepared to share tales during wonderful gatherings on the huge deck overlooking the magical panorama, and days spent fishing, swimming and boating.

Positioned on a rare 866sqm private allotment of easy-care grounds. With its wide frontage you will have an opportunity to own a property

3  3  0 

**FOR SALE**

North-East Facing Deep Waterfront

**VIEW**

By Appointment

**AGENTS**

Lachlan Elder  
0418 224 180  
lelder@ljhmv.com.au

**AGENCY**

LJ Hooker Mona Vale  
(02) 9979 8000

All information contained therein is gathered from relevant third parties sources.  
We cannot guarantee or give any warranty about the information provided.  
Interested parties must rely solely on their own enquiries.

 **LJ Hooker**

that many can only aspire too.

If you're looking for something special, it doesn't get any more special than this.

**Disclaimer:**

All information contained herewith, including but not limited to the general property description, price and the address, is provided to LJ Hooker Mona Vale by third parties. We have obtained this information from sources we believe to be reliable; however, we cannot guarantee its accuracy. The information contained herewith should not be relied upon and you should make your own enquiries and seek advice in respect of this property or any property on this website.

**MORE DETAILS**

Property ID	2WR3F6K
Property Type	House
Land Area	866 m2

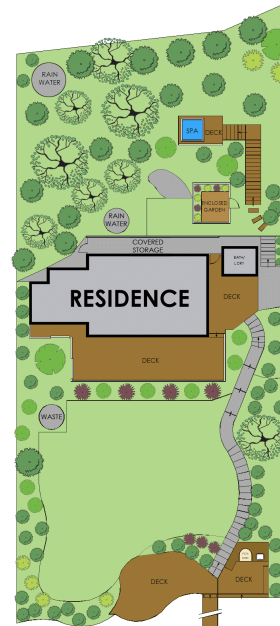
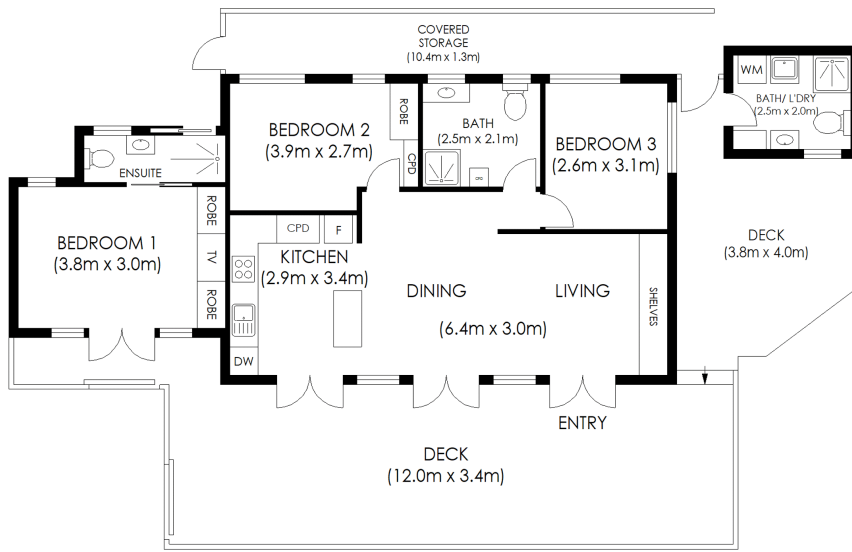
**Lachlan Elder 0418 224 180**

Principal, Licensed Real Estate Agent | [lelder@ljhmv.com.au](mailto:lelder@ljhmv.com.au)

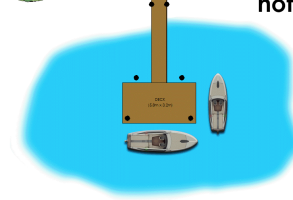
**LJ Hooker Mona Vale (02) 9979 8000**

3/18 Bungan Street, MONA VALE NSW 2103  
[monavale.ljhooker.com.au](http://monavale.ljhooker.com.au) | [monavale@ljhmv.com.au](mailto:monavale@ljhmv.com.au)





**SITE PLAN**  
not to scale



All information contained herewith, including but not limited to the general property description is provided to LJ Hooker Mona Vale by third parties. We have obtained this information from sources we believe to be reliable; however, we cannot guarantee its accuracy. The information contained herewith should not be relied upon and you should make your own enquiries and seek advice in respect of this property.



**14 BONA CRESCENT, MORNING BAY**

Scale 1:100

All information contained therein is gathered from relevant third parties sources. We cannot guarantee or give any warranty about the information provided. Interested parties must rely solely on their own enquiries.

