



Morley, 11A Ripley Place

Cracking Family Home Up For Grabs!

Welcome to this fantastic large home on a 570sqm block. Quintessential family living right here with ample space, large bedrooms, open plan family living and separate lounge.

Freshly painted and new carpets throughout, this gem of a home is ready to move into.

Tucked away at the back of the block, private, quiet and not overlooked, plenty of space for the kids to run around at the front without the worry of major traffic. On the doorstep of multiple parks, great shopping at Morley Galleria and only a short drive to Bayswater Waves.

Put this one on the weekend viewing list!

What we love:

4  2  4 

For Sale
\$749,000

View
ljhooker.com.au/3RD CFGJ

Contact
Katie Lawley
0448 682 624
katie.lawley@ljhooker.com.au



Disclaimer: All information contained therein is gathered from relevant third parties sources. We cannot guarantee or give any warranty about the information provided. Interested parties must rely solely on their own enquiries.

LJ Hooker City Residential
(08) 9325 0700

- * Large family home with excellent floorplan
- * Large master suite with walk-in robe and spa bath in en-suite*
- * Three great size minor bedrooms with built-ins
- * Huge open plan living and dining and separate lounge room
- * Parking for 2 cars
- * Great size garden to back and front
- * Freshly painted and new carpets throughout
- * Please note Spa bath not tested.

Rates:

Council - \$2,406.16 p.a.

Water - \$1,374.18 p.a.

More About this Property

Property ID	3RDCFGJ
Property Type	House
Land Area	569 m ²
Including	Air Conditioning Built-in-Robes Secure Parking Liveability

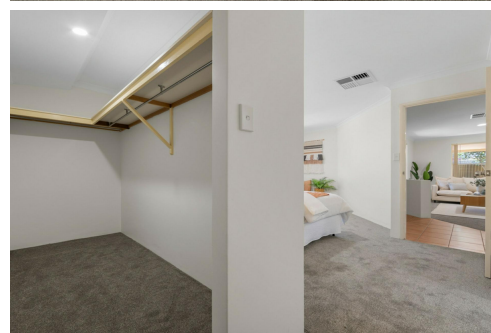
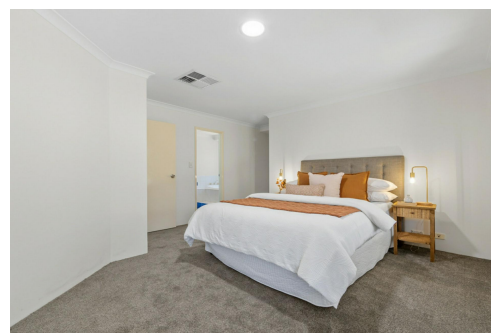
Katie Lawley 0448 682 624

Sales Executive | katie.lawley@ljhooker.com.au

LJ Hooker City Residential (08) 9325 0700

Shop 30, 82 Royal Street, EAST PERTH WA 6004

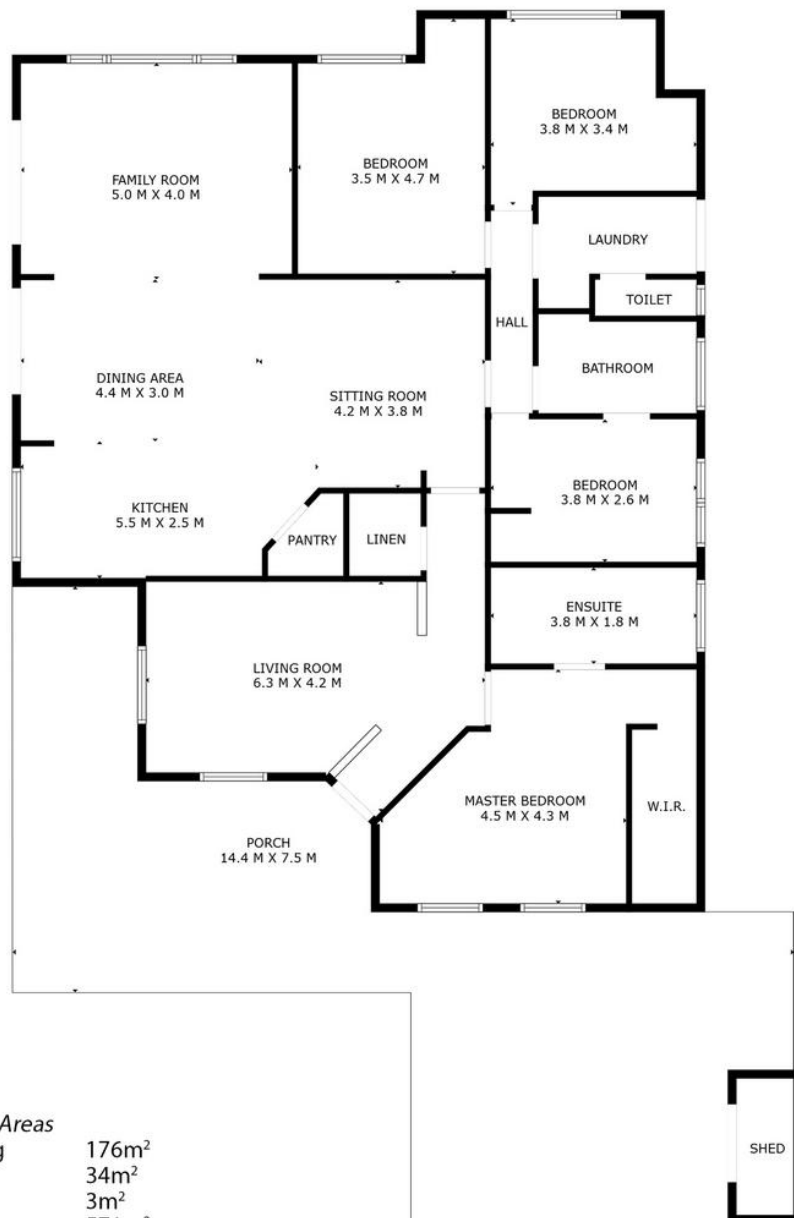
cityresperth.ljhooker.com.au | cityresperth@ljhooker.com.au



Disclaimer: All information contained therein is gathered from relevant third parties sources.

We cannot guarantee or give any warranty about the information provided. Interested parties must rely solely on their own enquiries.

LJ Hooker City Residential
(08) 9325 0700



<i>Approximate Areas</i>	
Internal Living	176m ²
Carport	34m ²
Shed	3m ²
Total Lot Size	571m ²



11A Ripley Place Morley

This floor plan is for illustrative purposes only. While every effort has been made to provide an accurate representation, all measurements & other information are approximation only.
www.perthrealestaemedia.com www.cityresperth.ljhooker.com.au



LJ Hooker City Residential
(08) 9325 0700

Disclaimer: All information contained therein is gathered from relevant third parties sources.
We cannot guarantee or give any warranty about the information provided. Interested parties must rely solely on their own enquiries.