



11a Esther Crescent, Mooroolbark

A Little Bit of Panache...

...and a touch of elegance ensures this 3 bedroom, 2 bathrooms with 2 living zones and single garage on a 303sqm (approx) of land has the "impress me" covered.

Positioned within a short stroll to the vibrant Mooroolbark shopping district, the design features a modern kitchen with central island to control the flow of entertainment inside and out. Lots of natural balanced light and total temperature control throughout covering all seasonal temperatures.

...And the "piece de resistance"- situated close to a variety of nature walks, parks and bicycle tracks - perfect for any adventure.

Call to inspect.

3 2 1

FOR SALE

\$750,000 - \$820,000

VIEW

Sat 21st Feb @ 11:00AM - 11:30AM

AGENTS

Richard Goldsmith

0407 348 172

richardgoldsmith@ljhookermooroolbark.com.au

Ben Hudson

0424 288 954

benhudson@ljhookermooroolbark.com.au

AGENCY

LJ Hooker Mooroolbark

(03) 9726 7711

All information contained therein is gathered from relevant third parties sources.
We cannot guarantee or give any warranty about the information provided.
Interested parties must rely solely on their own enquiries.



MORE DETAILS

Property ID	NQEFMS
Property Type	Townhouse
Land Area	303 m2
Including	Ensuite
	Ducted Heating
	Evaporative Cooling
	Toilets (2)
	Built-in-Robes

Richard Goldsmith 0407 348 172

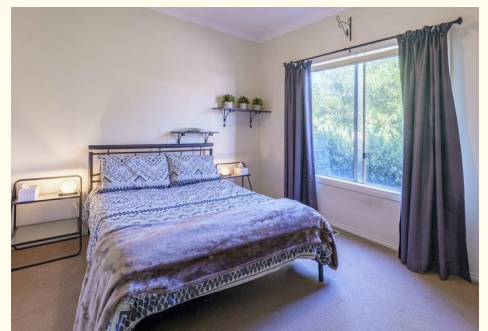
Senior Sales Consultant |
richardgoldsmith@ljhookermooroolbark.com.au

Ben Hudson 0424 288 954

Sales Consultant | benhudson@ljhookermooroolbark.com.au

LJ Hooker Mooroolbark (03) 9726 7711

64 Brice Avenue, MOOROOLBARK VIC 3138
mooroolbark.ljhooker.com.au | admin@ljhookermooroolbark.com.au



0 1 2 3 4



approx. scale (m)

This plan is a sketch, and all data shown is general only.

NB: All stated dimensions are approximate only & should not be taken as definite.



11A Esther Crescent, Mooroolbark

All information contained therein is gathered from relevant third parties sources.
We cannot guarantee or give any warranty about the information provided.
Interested parties must rely solely on their own enquiries.

 **LJ Hooker**