



## Mooroolbark, 10 Masefield Avenue

### READY TO RENOVATE

With walls begging to be painted, hardwood floors waiting to be freed from beneath the carpets, and a functional kitchen and bathroom both ready to be updated, this 3-bedroom, 1-bathroom family home is ready to be awoken from a decades long slumber.

Set on a generous half block, with no shared driveway, the property features an under-house work-shop/store, and enough space to landscape or entertain.

Don't miss this chance to create your dream starter home - schedule a viewing today and start planning your future!



**For Sale**  
Please Call

**View**  
[ljhooker.com.au/RX2FMS](https://ljhooker.com.au/RX2FMS)

**Contact**  
**Richard Goldsmith**  
0407 348 172  
[richardgoldsmith@ljhookermooroolbark.com.au](mailto:richardgoldsmith@ljhookermooroolbark.com.au)

**Ben Hudson**  
0424 288 954  
[benhudson@ljhookermooroolbark.com.au](mailto:benhudson@ljhookermooroolbark.com.au)



**Disclaimer:** All information contained therein is gathered from relevant third parties sources. We cannot guarantee or give any warranty about the information provided. Interested parties must rely solely on their own enquiries.

**LJ Hooker Mooroolbark**  
**(03) 9726 7711**

## More About this Property

<b>Property ID</b>	RX2FMS
<b>Property Type</b>	House
<b>Land Area</b>	434 m <sup>2</sup>
<b>Including</b>	Ducted Heating Toilets (1)

### **Richard Goldsmith 0407 348 172**

Senior Sales Consultant | richardgoldsmith@ljhookermooroolbark.com.au

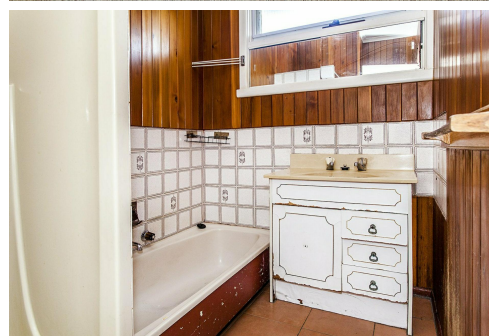
### **Ben Hudson 0424 288 954**

Sales Consultant | benhudson@ljhookermooroolbark.com.au

### **LJ Hooker Mooroolbark (03) 9726 7711**

64 Brice Avenue, MOOROOLBARK VIC 3138

mooroolbark.ljhooker.com.au | admin@ljhookermooroolbark.com.au



**Disclaimer:** All information contained therein is gathered from relevant third parties sources.  
We cannot guarantee or give any warranty about the information provided. Interested parties must rely solely on their own enquiries.

**LJ Hooker Mooroolbark  
(03) 9726 7711**

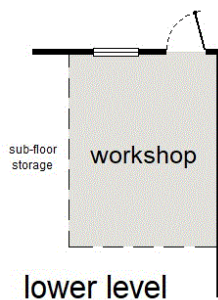


0 1 2 3 4

approx. scale (m)

This plan is a sketch, and all data shown is general only.

NB: All stated dimensions are approximate only & should not be taken as definite.



10 Masfield Avenue, Mooroolbark