



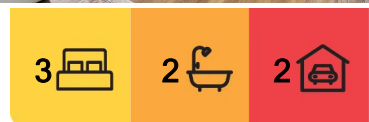
Moorooka, 5/10 Patricia Street

BEAUTIFUL TOWNHOUSE IN A BOUTIQUE COMPLEX

Just 7km from Brisbane CBD, this modern two-level townhouse is situated within a boutique complex of five. Positioned at the rear of the complex with only 1 adjoining wall it's perfect for owner-occupiers, investors, or families alike.

The appeal of this property is obvious from the moment you arrive, greeted by an open plan layout and elegant finishes. The striking black and white kitchen offers an island bench, great storage, modern appliances & dishwasher. The laundry sits behind the kitchen. The open plan lounge & dining provides ample space for the dining tables & oversized lounge, flowing effortlessly to the large courtyard enjoying breath taking views.

Ascend the timber staircase to the 3, well appointed bedrooms. The main bedroom is the first bedroom to the left with ensuite, built-in wardrobe, split system air-conditioning & ceiling fan. Down the hall are the two other bedrooms, both with built-in wardrobes and ceiling fans. The stunning main bathroom has a similar finish to the ensuite with a black



For Sale
INVITING OFFERS

View
By Appointment

Contact
Jane Elvin
0408 344 417
j.elvin@ljhookerproperty.com.au
Josephine Elvin
0457 000 897
joey.elvin@ljhookerproperty.com.au



Disclaimer: All information contained therein is gathered from relevant third parties sources. We cannot guarantee or give any warranty about the information provided. Interested parties must rely solely on their own enquiries.

LJ Hooker Annerley | Yeronga |
Salisbury
(07) 3848 7369

tilled feature wall, black tapware, floor to ceiling tiles & shower over bath.

Back on the ground level there is a double carport, with street parking available for visitors.

The location on offer is second to none. Situated on the upper side of Beaudesert Rd, in a very residential & highly sought after part of Moorooka it simply doesn't get any more convenient than this. Located within walking distance to the shops (inc. Woolworths), restaurants, parks & bus, within easy access to the train, universities, hospitals, QLD Tennis Centre & the CBD. Within the Moorooka State School & the Yeronga State High School Catchment.

Notable features of 5/10 Patrica St, Moorooka:

- Modern complex, only 6 years old
- Within a boutique complex of only 5 townhouses.
- 3 good-sized bedrooms all with built-in wardrobes & ceiling fans
- The main bedroom is air-conditioned & ensuited
- Main bathroom has a black tiled feature wall, black tapware, floor to ceiling tiles & shower over bath.
- Powder room on the lower level
- Striking black and white kitchen offers an island bench, great storage, modern appliances & dishwasher.
- The laundry sits behind the kitchen
- Spacious, air-conditioned, open plan lounge & dining with an engineered timber floor
- Large courtyard enjoying beautiful views
- Double carport
- Situated on the upper side of Beaudesert Rd, in a very residential & highly sought after part of Moorooka it simply doesn't get any more convenient than this.
- Located within walking distance to the shops (inc. Woolworths), restaurants, parks & bus
- Within easy access to the train, universities, hospitals, QLD Tennis Centre & the CBD.
- Within the Moorooka State School & the Yeronga State High School Catchment.

Contact Jane Elvin or Nick Morrison to discuss this outstanding property further.



Disclaimer: All information contained therein is gathered from relevant third parties sources. We cannot guarantee or give any warranty about the information provided. Interested parties must rely solely on their own enquiries.

**LJ Hooker Annerley | Yeronga |
Salisbury
(07) 3848 7369**

More About this Property

Property ID	1EWZH31
Property Type	Townhouse
Including	Ensuite Air Conditioning Courtyard Dishwasher Built-in-Robes

Jane Elvin 0408 344 417

Principal - Sales & Marketing Consultant | j.elvin@ljhookerproperty.com.au

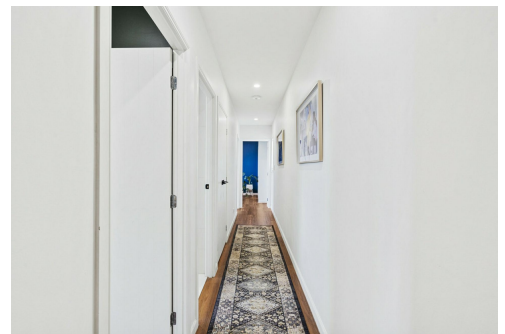
Josephine Elvin 0457 000 897

Property Manager & New Business Manager | Sales Associate to Jane Elvin | joey.elvin@ljhookerproperty.com.au

LJ Hooker Annerley | Yeronga | Salisbury (07) 3848 7369

443 Ipswich Road, ANNERLEY QLD 4103

annerleyyeronga.ljhooker.com.au | admin@ljhookerproperty.com.au



Disclaimer: All information contained therein is gathered from relevant third parties sources. We cannot guarantee or give any warranty about the information provided. Interested parties must rely solely on their own enquiries.

**LJ Hooker Annerley | Yeronga |
Salisbury
(07) 3848 7369**



Internal : 111m²
 External : 73m²
 Total : 184m²

3 | 2 | 2 | 184m²



5/10 Patricia Street MOOROOKA

LJ Hooker

All dimensions are approximate; they are subject to errors and inaccuracies and no liability will be accepted.
 Plans are shown for marketing purposes only.

LJ Hooker

**LJ Hooker Annerley | Yeronga |
 Salisbury
 (07) 3848 7369**

Disclaimer: All information contained therein is gathered from relevant third parties sources.
 We cannot guarantee or give any warranty about the information provided. Interested parties must rely solely on their own enquiries.