

4 Elouera Crescent, Moorebank

## An impressive family entertainer on 892sqm, where expansive living meets a resort-inspired pool retreat.

Positioned in a quiet crescent on approximately 892sqm of R3 Medium Density zoned land with an impressive 18.3m frontage, this spacious double-storey residence offers outstanding family living with future development potential (STCA). Featuring multiple living zones, generous bedrooms and a private backyard with swimming pool, this is a rare opportunity in one of Moorebank's most convenient pockets.

- Approx. 892sqm block
- R3 Medium Density zoning
- Wide 18.3 metre frontage
- Five generous bedrooms including master with ensuite
- Study that can also be your 6th bedroom
- Multiple formal & informal living areas
- Large kitchen with island bench & ample storage
- Separate lounge, dining & rumpus zones
- Covered alfresco entertaining area
- ground swimming pool with timber deck surrounds
- Carport plus additional off-street parking

All information contained therein is gathered from relevant third parties sources. We cannot guarantee or give any warranty about the information provided. Interested parties must rely solely on their own enquiries.

5 🚗 3 🚗 2 🚗

**FOR SALE**

Please Call

**AGENTS**

Larissa Schembri

0427 582 245

larissaschembri.bl@ljhooker.com.au

Elie Hosni

0489 046 251

eliehosni.bl@ljhooker.com.au

**AGENCY**

LJ Hooker Liverpool

02 9708 2333

 **LJ Hooker**

- Drive-through access to backyard
- Close to schools, shops & transport

**DISCLAIMER:** While LJ Hooker Bankstown | Liverpool have taken all care in preparing this information and used their best endeavours to ensure that the information contained is true and accurate, we accept no responsibility and disclaim all liability in respect of any errors, inaccuracies, or misstatements contained herein. LJ Hooker Bankstown | Liverpool urges prospective purchasers to make their own inquiries to verify the information contained herein.

## MORE DETAILS

Property ID	J4J0W
Property Type	House
Land Area	892 m2

**Larissa Schembri 0427 582 245**

Licensee in charge/Director | [larissaschembri.bl@ljhooker.com.au](mailto:larissaschembri.bl@ljhooker.com.au)

**Elie Hosni 0489 046 251**

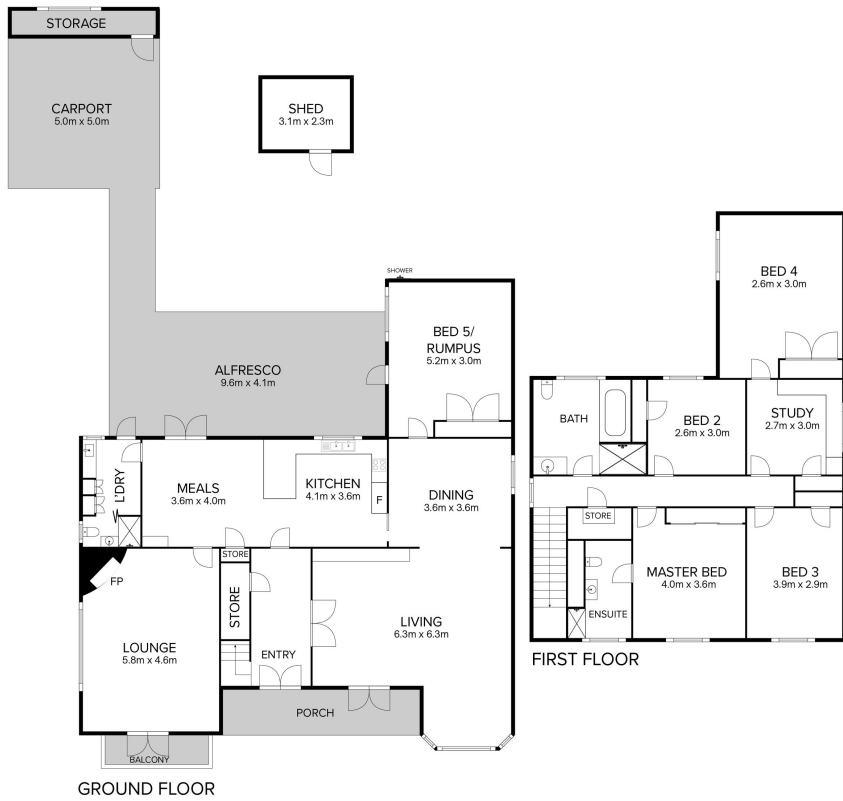
| [eliehosni.bl@ljhooker.com.au](mailto:eliehosni.bl@ljhooker.com.au)

**LJ Hooker Liverpool 02 9708 2333**

312 Macquarie Street, LIVERPOOL NSW 2170

[liverpool.ljhooker.com.au](http://liverpool.ljhooker.com.au) | [liverpool@ljhooker.com.au](mailto:liverpool@ljhooker.com.au)





4 Elouera Crescent, | Moorebank

**Disclaimer:** Dimensions are approximate and should only be used as a guide. All information contained herein is gathered from sources we believe to be reliable. However, we cannot guarantee its accuracy and interested parties should rely on their own enquiries.