



Moorebank, 31 Thompson Avenue

Stylish Family Living with Space, Storage & A Modern Touch

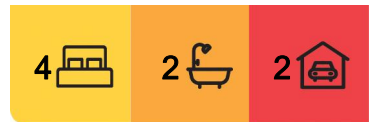
Set in a quiet, family-friendly pocket of Moorebank, this beautifully updated home offers the perfect blend of modern comfort, versatile space and effortless living. Boasting three generous bedrooms, multiple living areas and an expansive outdoor entertaining area, this is a property ready to impress growing families, investors and upsizers alike.

Step inside and discover an open plan layout enhanced by fresh updates throughout. The fully renovated kitchen is a standout, featuring sleek cabinetry, stainless steel appliances, gas cooking and a convenient breakfast bar —all flowing seamlessly into the spacious dining and outdoor entertaining zone.

Enjoy total relaxation in the designer bathroom, complete with floor-to-ceiling tiles, a freestanding bathtub, black matte fittings and a frameless walk-in shower. The master bedroom includes a private ensuite, while the additional bedrooms are well-sized with easy



Disclaimer: All information contained therein is gathered from relevant third parties sources. We cannot guarantee or give any warranty about the information provided. Interested parties must rely solely on their own enquiries.



For Sale
Please Call

View
ljhooker.com.au/BDJ0W

Contact
Larissa Schembri
0427 582 245
larissaschembri.bl@ljhooker.com.au

Rosie Nader
0448 828 218
rosienader.bl@ljhooker.com.au

LJ Hooker Liverpool
02 9708 2333

access to the main bath.

Outside, entertain in style under the covered alfresco or make use of the huge workshop and additional storage areas —ideal for tradies, hobbyists or families needing extra room.

Property Features:

- Four bedrooms with built-in wardrobes,
- Master features ensuite
- Stylishly renovated bathroom with luxury finishes
- Contemporary kitchen with gas cooktop & breakfast bar
- Open plan living and dining, ideal for entertaining
- Spacious undercover alfresco area
- Large workshop + additional storage room
- Carport parking, wide side access
- Land size approx. 676.6sqm
- R3 Zoning

Located moments to local schools, parks, transport, and Moorebank Shopping Village, this home offers exceptional lifestyle and value in one of the area's most convenient pockets.

DISCLAIMER: While LJ Hooker Bankstown Liverpool have taken all care in preparing this information and used their best endeavours to ensure that the information contained is true and accurate, we accept no responsibility and disclaim all liability in respect of any errors, inaccuracies or misstatements contained herein. LJ Hooker Bankstown Liverpool urges prospective purchasers to make their own inquiries to verify the information contained herein.

More About this Property

| | |
|----------------------|--------|
| Property ID | BDJ0W |
| Property Type | House |
| Land Area | 676 m2 |

Larissa Schembri 0427 582 245

Licensee in charge/Director | larissaschembri.bl@ljhooker.com.au

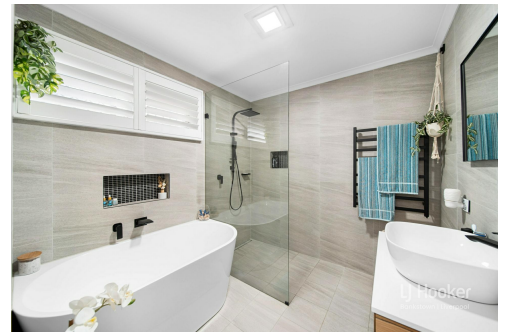
Rosie Nader 0448 828 218

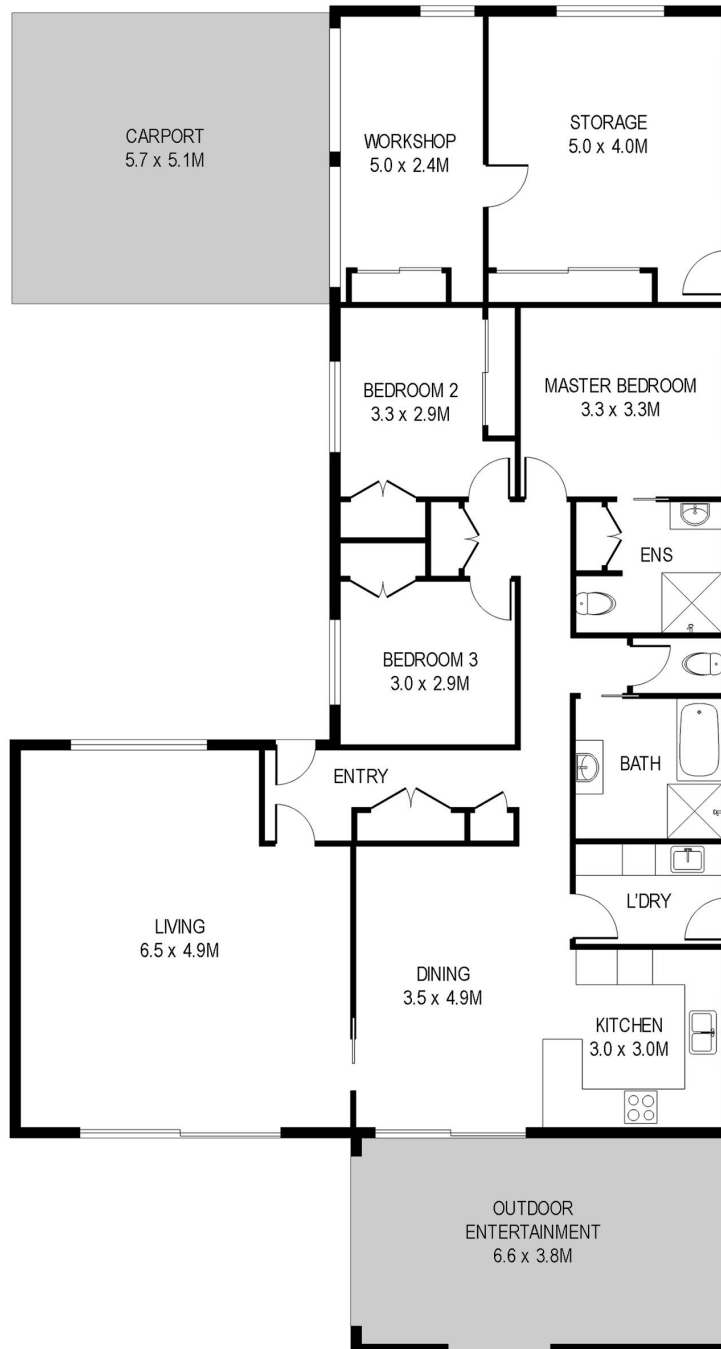
Licensed Real Estate Agent | rosienader.bl@ljhooker.com.au

LJ Hooker Liverpool 02 9708 2333

312 Macquarie Street, LIVERPOOL NSW 2170

liverpool.ljhooker.com.au | liverpool@ljhooker.com.au





31 Thompson Avenue | Moorebank

Disclaimer: Dimensions are approximate and should only be used as a guide. All information contained herein is gathered from sources we believe to be reliable. However, we cannot guarantee its accuracy and interested parties should rely on their own enquiries.