



## Moorebank, 32 Ikara Crescent

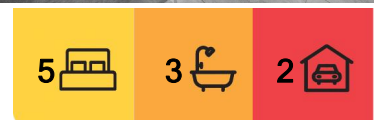
Contemporary & Elegant 5 Bedroom Home, Peaceful Cul-de-Sac

Experience modern luxury and exceptional family living in this stunning five bedroom home, ideally positioned at the end of a peaceful cul-de-sac in a highly convenient location. Set within a quiet, sought-after neighbourhood, this quality residence enjoys a prized north-east rear aspect that bathes the home in natural sunlight. Architecturally crafted with spacious and versatile light-filled interiors, this superb property features contemporary finishes, high-quality design and meticulous attention to detail. A perfect fusion of elegance and comfort, this home is your ideal haven for stylish entertaining and relaxed family living!

- Sleek contemporary facade leading to sitting area upon keyless front door entry, complete with large designated study area and built-in shelves
- Feature hardwood timber staircase with ample under stairs storage area leading to additional family retreat area upstairs



**Disclaimer:** All information contained therein is gathered from relevant third parties sources. We cannot guarantee or give any warranty about the information provided. Interested parties must rely solely on their own enquiries.



**For Sale**  
FOR SALE | Contact Agent

**View**  
Sat 7th Jun @ 11:00AM - 11:30AM

**Contact**  
**Muhammad Sarmini**  
0403 750 917  
muhammad@ljhbl.com.au

**LJ Hooker Belmore**  
(02) 9750 9244

- Inviting open plan living, kitchen and dining area flowing to outdoor entertaining area
- Four (4) spacious bedrooms upstairs with custom joinery built-in wardrobes, generous sized master bedroom includes plush ensuite and walk-in robe plus additional built-in wardrobe
- Versatile 5th bedroom downstairs with built-in robes, ideal for additional family/guest accommodation or large home office/additional study
- Stylish designer kitchen with stone benchtops and generous sized breakfast bar, gas cooking, quality European appliances and fully integrated dishwasher
- Three (3) deluxe fully tiled bathrooms with stone top vanities, frameless glass finishes, main includes bathtub and shower, internal laundry
- Quality porcelain tiled flooring downstairs and timber floors on upper level
- Zoned Daikin ducted air-conditioning, security video intercom and alarm system
- Covered outdoor alfresco entertaining area including kitchenette, gas cooktop, ceiling fan and storage space
- Low maintenance landscaped gardens and child friendly rear yard
- Driveway leading to remote lock-up garage with internal access and car space

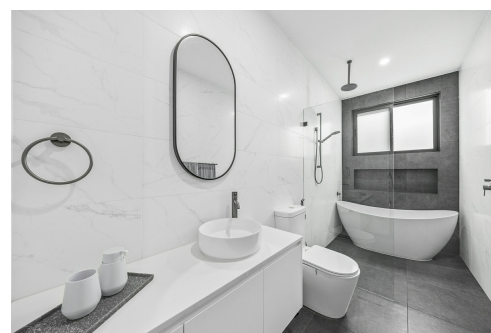
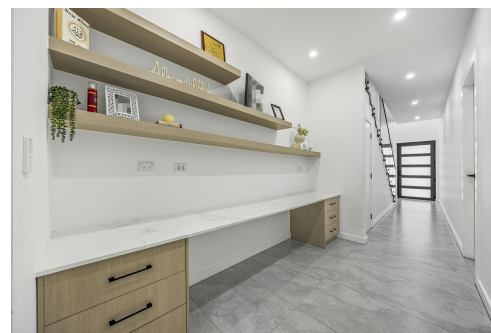
Conveniently situated only 1km from Moorebank Plaza featuring main shopping facilities, vibrant cafes and restaurants, 850m to recreational parklands such as Central Park, 600m to nearby amenities including medical centre and public library and within close proximity to local schools, public transport and offers easy access to M5 motorway!

Address: 32 Ikara Crescent, Moorebank

For Sale: Contact Agent

Inspect: As advertised or by appointment

Contact: Muhammad Sarmini 0403 750 917 or [muhammad@ljhbl.com.au](mailto:muhammad@ljhbl.com.au)



## More About this Property

<b>Property ID</b>	969HRQ
<b>Property Type</b>	DuplexSemi-detached
<b>Including</b>	Ensuite Study Air Conditioning Ducted Cooling Ducted Heating Toilets (3) Alarm Intercom Balcony Dishwasher Outdoor Entertaining Floorboards Built-in-Robes Secure Parking Remote Garage

**Muhammad Sarmini 0403 750 917**

Director | Selling Licensee-in-Charge | [muhammad@ljhbl.com.au](mailto:muhammad@ljhbl.com.au)

**LJ Hooker Belmore (02) 9750 9244**

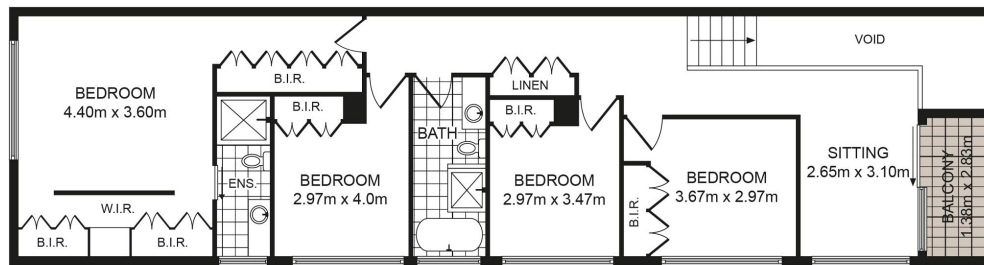
435-437 Burwood Road, BELMORE NSW 2192

[belmore.ljhooker.com.au](http://belmore.ljhooker.com.au) | [info@ljhbl.com.au](mailto:info@ljhbl.com.au)

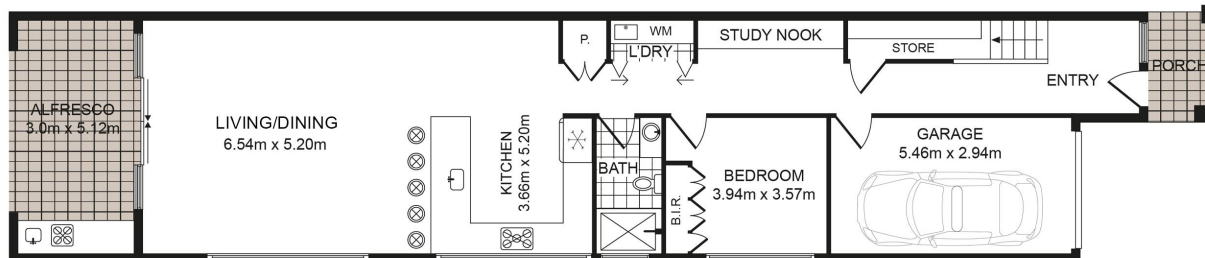


**Disclaimer:** All information contained therein is gathered from relevant third parties sources. We cannot guarantee or give any warranty about the information provided. Interested parties must rely solely on their own enquiries.

**LJ Hooker Belmore**  
(02) 9750 9244



FIRST FLOOR



GROUND FLOOR



SITE PLAN

### 32 Ikara Cres, Moorebank NSW 2170

Whilst every attempt has been made to ensure the accuracy of the floor plan contained here, measurements of doors, windows, room and any other items are approximate and no responsibility is taken for any error, omission or mis-statement. This plan is for illustration purpose only and should be used as such by any prospective purchaser. The service, systems and appliances shown have not been tested and no guarantee as to their operability or efficiency can be given.

**LJ Hooker** Belmore