



## Moore, 7 Bishop Street

Charming North Facing Home with Mountain Views on Elevated 1,012m<sup>2</sup>; Block

Discover comfort, convenience and country charm in this beautifully positioned home, set in a peaceful street just 900 metres from the scenic Brisbane Valley Rail Trail. Boasting an elevated 1,012m<sup>2</sup>; block with direct north facing orientation, this property captures year round sunshine and stunning mountain views from a spacious front deck, the perfect spot to relax or entertain.

Step inside to a light filled open plan lounge, dining, and kitchen area enhanced by skylight windows that invite natural light to stream in. The functional kitchen offers electric cooking, ample pantry storage and flows seamlessly into the living space, ideal for modern, connected living.

Featuring two bedrooms, including a master with a built in robe, the home is designed for comfort with ceiling fans and air conditioning throughout. The combined bathroom and

2	1	0
---	---	---

**For Sale**  
Please Call

**View**  
[ljhooker.com.au/9N6HES](http://ljhooker.com.au/9N6HES)

**Contact**  
**Leanne Tinney**  
0417 747 608  
[leanne.tinney@ljhooker.com.au](mailto:leanne.tinney@ljhooker.com.au)



**LJ Hooker Esk | Toogoolawah**  
**(07) 5424 2222**

**Disclaimer:** All information contained therein is gathered from relevant third parties sources. We cannot guarantee or give any warranty about the information provided. Interested parties must rely solely on their own enquiries.

laundry are conveniently accessible, and the entire home has been thoughtfully designed with wheelchair access in mind.

Additional highlights include:

- Quiet, family friendly street
- Wheelchair accessible layout
- School bus stop just 400 metres away
- 23km to Blackbutt, 34km to Kilcoy
- Moore township amenities: police station, cafes, popular children's playground, tennis courts, and a vibrant community hall

Perfect for first home buyers, downsizers, or those seeking a peaceful tree change, this home combines practicality, charm, and a brilliant location close to nature and community.

Don't miss your chance to secure this delightful property. Contact us today to arrange your inspection!

Advertising Disclaimer

LJ Hooker Esk | Toogoolawah, its directors, agents, employees, officers and those otherwise associated with maintaining, updating and preparing information on this website have used our best endeavours to ensure that the information contained herein is true and accurate, but accept no responsibility and disclaim all liability in respect of any errors, omissions, inaccuracies or misstatements that may occur. Prospective purchasers should make their own enquiries to verify the information contained herein.

## More About this Property

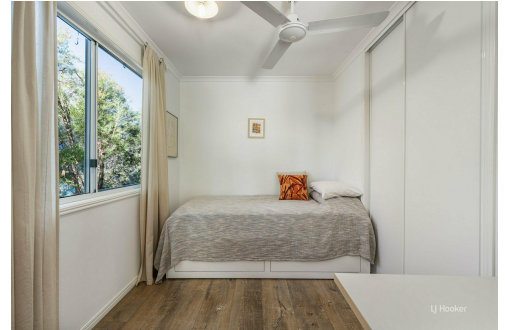
<b>Property ID</b>	9N6HES
<b>Property Type</b>	House
<b>Land Area</b>	1012 m2
<b>Including</b>	Air Conditioning Toilets (1) Deck Outdoor Entertaining Built-in-Robes Grey Water System Water Tank

**Leanne Tinney 0417 747 608**

Sales | [leanne.tinney@ljhooker.com.au](mailto:leanne.tinney@ljhooker.com.au)

**LJ Hooker Esk | Toogoolawah (07) 5424 2222**

221 Ipswich Street, ESK QLD 4312  
[esk.ljhooker.com.au](http://esk.ljhooker.com.au) | [esk@ljhooker.com.au](mailto:esk@ljhooker.com.au)



**LJ Hooker Esk | Toogoolawah  
(07) 5424 2222**

**Disclaimer:** All information contained therein is gathered from relevant third parties sources. We cannot guarantee or give any warranty about the information provided. Interested parties must rely solely on their own enquiries.