



Mona Vale, 24/12-14 Waratah Street

2 Bedrooms + Oversized Study - Entry Level Buying In A Prime Location

First home?

Investment?

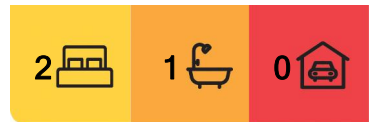
Welcome to 'Waratah Court' the original shop top housing in Mona Vale offering unbeatable space, lifestyle, and value right in the centre of one of the Northern Beaches' most sought after suburbs.

This unique and spacious 90sqm unit features:

- * Two huge bedrooms plus an extra-large study, all with built-in wardrobes
- * Open-plan living and a sunny, generously sized kitchen
- * A massive master bedroom (lots of room for a king size bed) and a spacious second



Disclaimer: All information contained therein is gathered from relevant third parties sources. We cannot guarantee or give any warranty about the information provided. Interested parties must rely solely on their own enquiries.



For Sale
Auction - Best Value On Beaches

View
By Appointment

Contact
Josephine Cowling
0419 430 766
jcowling@ljhmv.com.au
Luka Valkovic
0432 609 312
lvalkovic@ljhmv.com.au

LJ Hooker Mona Vale
(02) 9979 8000

bedroom

- * A private easterly-facing balcony to enjoy your morning coffee
- * An original large bathroom filled with natural light
- * Easy-care layout
- * Potential to update and add your own stamp

When it comes to location, this truly stands out. Positioned right in the heart of Mona Vale Village, everything you need is just moments from your doorstep from vibrant cafes and popular restaurants to supermarkets, boutiques, and essential services.

Enjoy a relaxed coastal lifestyle with the beach and Pittwater just a 10-minute walk away. Plus, with B-Line express buses only a few minutes from home, commuting to the city is fast and hassle-free.

Offering the best value per square metre in central Mona Vale, this is a smart choice for first home buyers, savvy investors, or downsizers who are looking for generous space and unbeatable convenience all without compromising on location.

** For access take any of the courtyard stairs within Waratah Court to level one and keep an eye out for our signage **

Current Rates (approx.)

Strata Rates: \$ 1,311.90 p/qtr

Council Rates: \$359.20 p/qtr

Water Rates: \$170.90 p/qtr

Disclaimer:

All information contained herewith, including but not limited to the general property description, price and the address, is provided to LJ Hooker Mona Vale by third parties. We have obtained this information from sources we believe to be reliable; however, we cannot guarantee its accuracy. The information contained herewith should not be relied upon and you should make your own enquiries and seek advice in respect of this property or any property on this website.

More About this Property

Property ID	2W6HF6K
Property Type	Unit
House Size	90 m2

Josephine Cowling 0419 430 766

Licensed Real Estate Agent & Auctioneer | jcowling@ljhmv.com.au

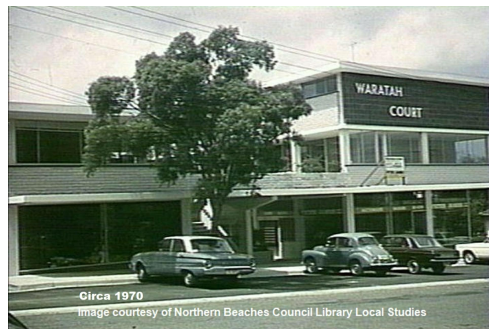
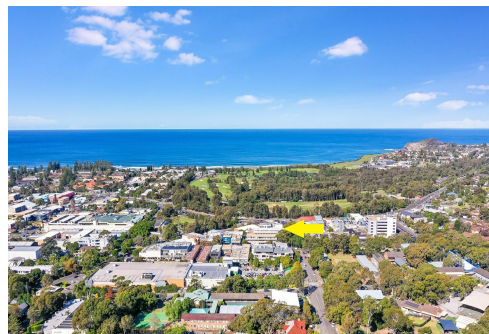
Luka Valkovic 0432 609 312

Licensed Real Estate Agent | lvalkovic@ljhmv.com.au

LJ Hooker Mona Vale (02) 9979 8000

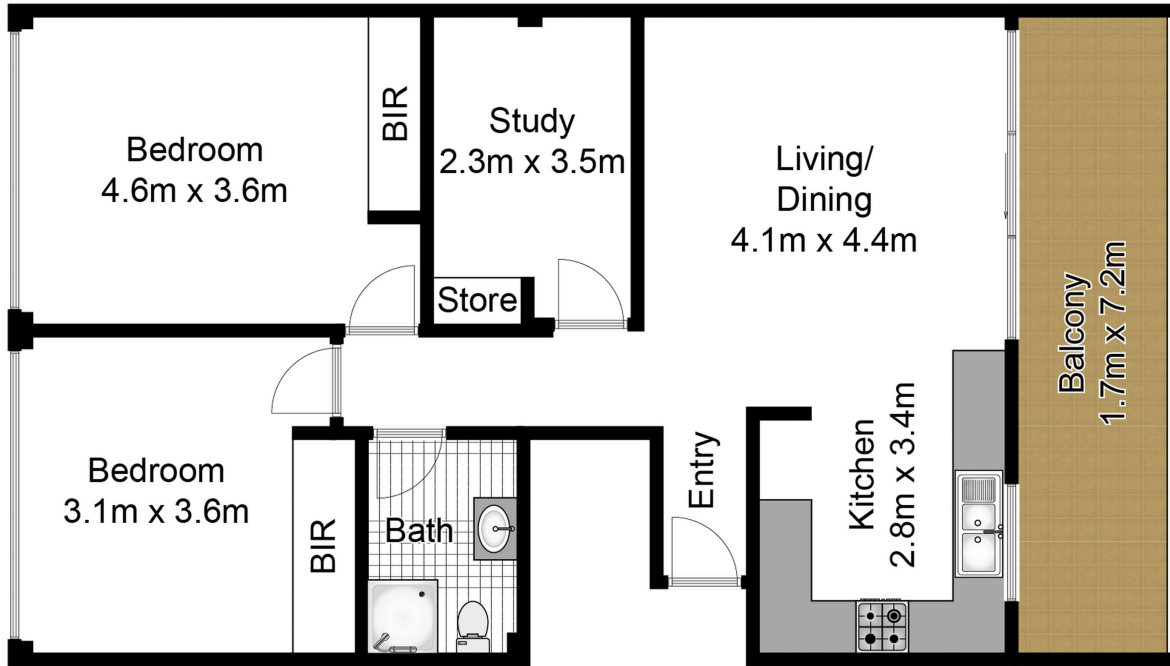
3/18 Bungan Street, MONA VALE NSW 2103

monavale.ljhooker.com.au | monavale@ljhmv.com.au



**LJ Hooker Mona Vale
(02) 9979 8000**

Disclaimer: All information contained therein is gathered from relevant third parties sources. We cannot guarantee or give any warranty about the information provided. Interested parties must rely solely on their own enquiries.



Whilst bwrn.com.au has made every attempt to ensure the accuracy of the floor plan contained here, measurements are approximate and no responsibility is taken for any error, omission, or mis-statement. This plan is for illustrative purposes only.



24/12-14 Waratah Street, Mona Vale



LJ Hooker Mona Vale
(02) 9979 8000

Disclaimer: All information contained therein is gathered from relevant third parties sources. We cannot guarantee or give any warranty about the information provided. Interested parties must rely solely on their own enquiries.