



Mona Vale, 2/28-30 Golf Avenue

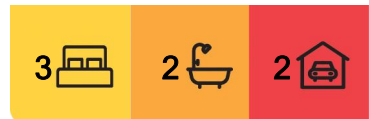
Boutique Townhouse In Sought After Beachside Location

Capturing the essence of relaxed coastal luxury, this beautifully presented townhouse provides the perfect low maintenance lifestyle directly opposite Mona Vale Golf course and within ear shot of the breaking waves. With its own street entrance, twin courtyards to capture all day sun and free flowing living spaces, life at 'Monterey' will keep you smiling. A terrific opportunity for those looking for that modern beachside abode. Short walk to trendy seaside cafes and restaurants, beach and ocean pool, express B-Line buses, dog park and Mona Vale village.

- * Bathed in all day sunshine, lovely fresh air and cooling sea breezes
- * Stylishly renovated Caesarstone kitchen with stainless steel European appliances, gas cooktop and breakfast bar
- * Sun filled family room connects seamlessly with the private north facing alfresco and entertaining space
- * Large open lounge/dining flows out to the front courtyard through glass sliding doors



Disclaimer: All information contained therein is gathered from relevant third parties sources. We cannot guarantee or give any warranty about the information provided. Interested parties must rely solely on their own enquiries.



For Sale
Priced to Entice \$2,200,000 - \$2,300,000

View
ljhooker.com.au/2VDFF6K

Contact
Ryan Petrie
0403 988 123
rpetrie@ljhmv.com.au
Simone Novak
0418 601 599
snovak@ljhmv.com.au

LJ Hooker Mona Vale
(02) 9979 8000

- * Light and bright freshly painted interiors, timber floors, louvers, air conditioning and gas bayonet for heating
- * Generous bedrooms all with built-ins, spacious main has luxe full size ensuite and balcony
- * Chic bathrooms/guest powder room and internal laundry
- * Direct internal access to side-by-side lockup double garage with bespoke built-in storage

Enjoy the best of beachside living and village convenience. A prized opportunity not to be missed for all beach lovers, especially downsizers looking for that perfect lock up and leave lifestyle.

Strata: \$2318pq

Council: \$1615.91pa

Disclaimer:

All information contained herewith, including but not limited to the general property description, price and the address, is provided to LJ Hooker Mona Vale by third parties. We have obtained this information from sources we believe to be reliable; however, we cannot guarantee its accuracy. The information contained herewith should not be relied upon and you should make your own enquiries and seek advice in respect of this property or any property on this website.

More About this Property

Property ID	2VDF6K
Property Type	Townhouse

Ryan Petrie 0403 988 123

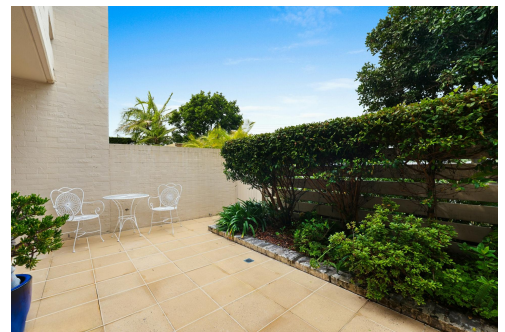
Licensed Real Estate Agent | rpetrie@ljhmv.com.au

Simone Novak 0418 601 599

Licensed Real Estate Agent | snovak@ljhmv.com.au

LJ Hooker Mona Vale (02) 9979 8000

3/18 Bungan Street, MONA VALE NSW 2103
 monavale.ljhooker.com.au | monavale@ljhmv.com.au

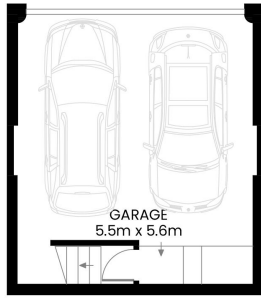


**LJ Hooker Mona Vale
 (02) 9979 8000**

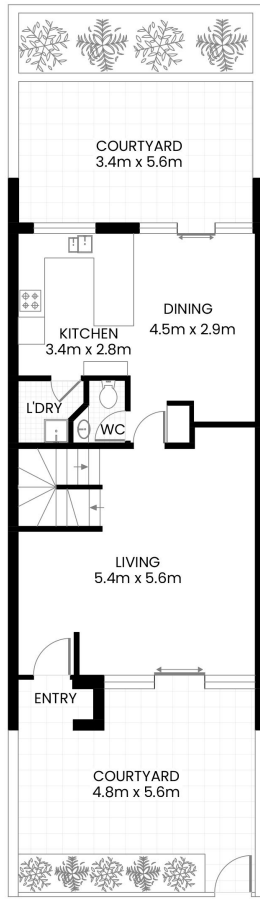
Disclaimer: All information contained therein is gathered from relevant third parties sources. We cannot guarantee or give any warranty about the information provided. Interested parties must rely solely on their own enquiries.

2/28-30 Golf Avenue
Mona Vale

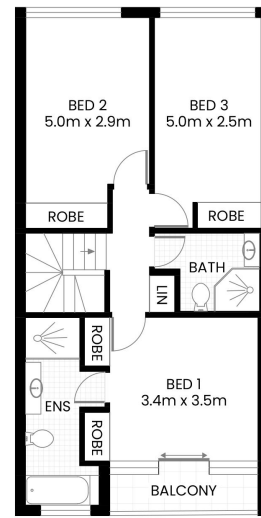
INTERNAL AREA 156m² APPROX.
 INCL GARAGE
 EXTERNAL AREA 58m² APPROX.
 TOTAL AREA 212m² APPROX.



LOWER GROUND FLOOR



GROUND FLOOR



FIRST FLOOR



The site plan and floor plan are not to scale; measurements are indicative and in meters. Bushes and trees are placed for illustration purposes. Plans should not be relied on. Interested parties should make and rely on their own enquire. All other information provided has been collected from reliable sources but cannot be guaranteed for accuracy.



LJ Hooker Mona Vale
 (02) 9979 8000

Disclaimer: All information contained therein is gathered from relevant third parties sources. We cannot guarantee or give any warranty about the information provided. Interested parties must rely solely on their own enquiries.