



16 Southbourne Way, Mona Vale

Northerly Facing Torrens Title Sanctuary in Prestigious "The Woodlands Estate"

Set within the highly sought-after Woodlands Estate, this beautifully presented Torrens Title residence offers an exceptional opportunity for downsizers, young families, or those seeking a premium low-maintenance lifestyle in one of Mona Vale's most tightly held pockets. Combining relaxed coastal charm with modern comfort, this sun-drenched home boasts a prime north-easterly aspect and seamless indoor-outdoor living - perfect for entertaining or quiet retreats.

Features:

- Ideal north-easterly aspect with light-filled interiors and sun-drenched terraces
- Private courtyard oasis, perfect for entertaining or unwinding, featuring an automated Vergola for year-round enjoyment
- Spacious open-plan living and dining areas with beautiful hardwood timber flooring
- Well-appointed kitchen with quality appliances, ample storage, and a casual meals area
- Three generous bedrooms, all with built-in robes; the master and second bedroom open to private terraces capturing sea breezes

3 2 1

FOR SALE
SOLD prior to auction

AGENTS

Josephine Cowling
0419 430 766
jcowling@ljhmv.com.au

Luka Valkovic
0432 609 312
lvalkovic@ljhmv.com.au

AGENCY

LJ Hooker Mona Vale
(02) 9979 8000

All information contained therein is gathered from relevant third parties sources.
We cannot guarantee or give any warranty about the information provided.
Interested parties must rely solely on their own enquiries.



- and district ocean glimpses
- Two stylish renovated bathrooms plus a convenient downstairs powder room
- Ducted air conditioning on the upper level for year-round comfort
- Lock-up garage with internal access plus additional off-street parking
- Abundant internal storage throughout
- Approx. Rates - Council \$531.95 p/qtr; Community Levies \$819.75 p/qtr; Water \$204.13 p/qtr

Enjoy the warm community feel of "The Woodlands Estate", known for its friendly neighbours and peaceful, leafy surroundings. This tranquil sanctuary is just a short, near-level stroll to the vibrant heart of Mona Vale Village, with its boutique shops, cafes, dining options, and everyday essentials.

Also within easy reach are:

- Line express bus to the CBD
- A choice of beautiful local beaches, parks, and golf courses
- Well-regarded local schools and childcare centres

This immaculate home delivers the perfect blend of lifestyle, location, and convenience in one of the Northern Beaches' most desirable addresses. A haven, ready to move in and enjoy. It is time for you to live the dream...

Disclaimer:

All information contained herewith, including but not limited to the general property description, price and the address, is provided to LJ Hooker Mona Vale by third parties. We have obtained this information from sources we believe to be reliable; however, we cannot guarantee its accuracy. The information contained herewith should not be relied upon and you should make your own enquiries and seek advice in respect of this property or any property on this website.

MORE DETAILS

Property ID	2WDMF6K
Property Type	Townhouse
Land Area	242.5 m2
Including	Courtyard Balcony Outdoor Entertaining Floorboards Built-in-Robes Remote Garage

Josephine Cowling 0419 430 766

Licensed Real Estate Agent & Auctioneer | jcowling@ljhmv.com.au

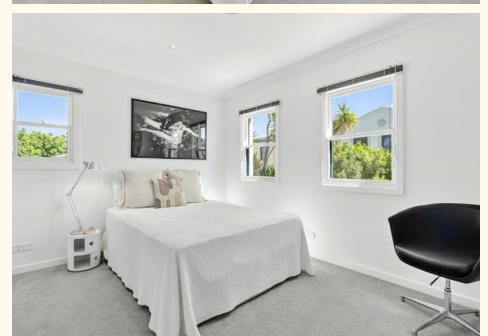
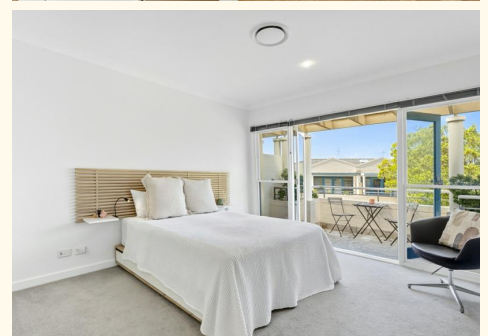
Luka Valkovic 0432 609 312

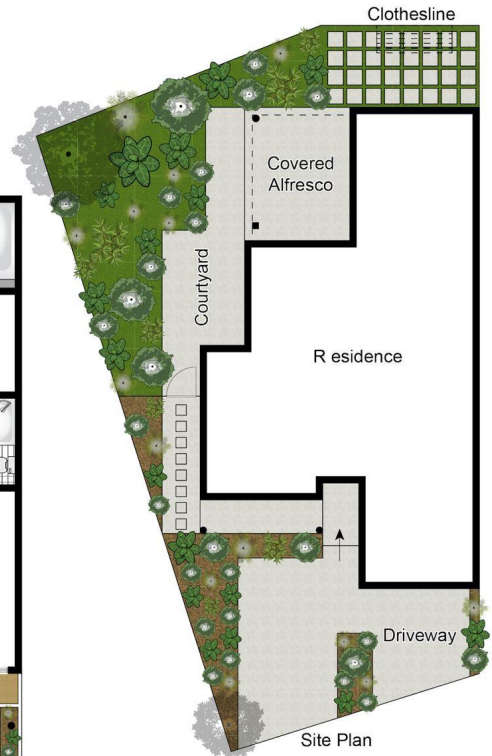
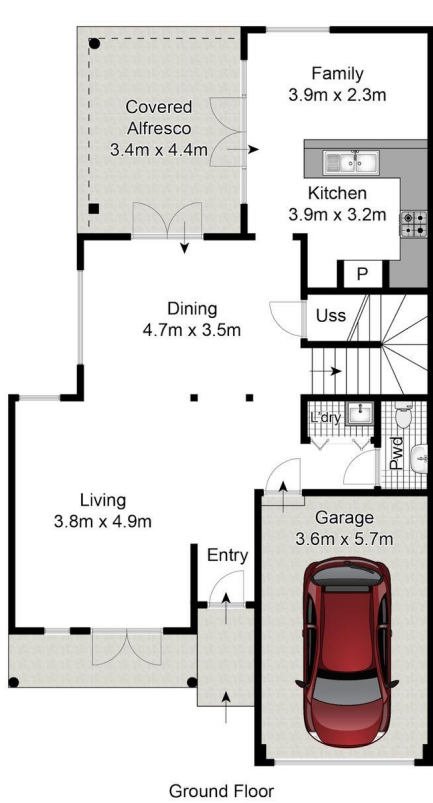
Licensed Real Estate Agent | lvalkovic@ljhmv.com.au

LJ Hooker Mona Vale (02) 9979 8000

3/18 Bungan Street, MONA VALE NSW 2103

monavale.ljhooker.com.au | monavale@ljhmv.com.au





Whilst bwrn.com.au has made every attempt to ensure the accuracy of the floor plan contained here, measurements are approximate and no responsibility is taken for any error, omission, or mis-statement. This plan is for illustrative purposes only.



16 Southbourne Way, Mona Vale



All information contained therein is gathered from relevant third parties sources. We cannot guarantee or give any warranty about the information provided. Interested parties must rely solely on their own enquiries.

