



## Mona Vale, 6 Coronation Street

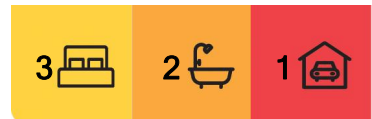
Charming Beachside Family Cottage – On 765sqm  
Approx – Great Location

One of Warriewood Beach's original quintessential beach houses, positioned in this sought after beachside location within easy walking distance of the sand and surf ... embrace your new coastal lifestyle!

Set on approximately 765.1sqm of near level land, this character filled family home with three bedrooms and a study has loads of potential to add your own personality and style.

\* Open plan living and dining with full length front balcony overlooking the leafy yard

\* Covered entertaining terrace overlooking the private gently sloping backyard



**For Sale**

Break Into This Tightly Held Locale

**View**

[ljhooker.com.au/2UMYF6K](https://ljhooker.com.au/2UMYF6K)

**Contact**

**Kylie Segedin**

0417 744 317

[ksegedin@ljhmv.com.au](mailto:ksegedin@ljhmv.com.au)

**Josephine Cowling**

0419 430 766

[jcowling@ljhmv.com.au](mailto:jcowling@ljhmv.com.au)



**LJ Hooker Mona Vale**  
**(02) 9979 8000**

**Disclaimer:** All information contained therein is gathered from relevant third parties sources. We cannot guarantee or give any warranty about the information provided. Interested parties must rely solely on their own enquiries.



lawn ... ideal for kids, pets and family get togethers

\* Three good size bedrooms, plus a study

\* Family bathroom with separate toilet. Additional powder room

\* Lock up garage with off-street driveway parking

Within and easy walk to Warriewood and Mona Vale beaches, cinemas, nearby local cafes and restaurants, your choice of beachfront reserves, sports and recreational facilities and transport, including the B-Line express service to the CBD.

Loads of options to capitalise on this elite location ... live-in as is, renovate or knock down and built your dream home in keeping with the surrounding prestige residences.

Disclaimer:

All information contained herewith, including but not limited to the general property description, price and the address, is provided to LJ Hooker Mona Vale by third parties. We have obtained this information from sources we believe to be reliable; however, we cannot guarantee its accuracy. The information contained herewith should not be relied upon and you should make your own enquiries and seek advice in respect of this property or any property on this website.

## More About this Property

<b>Property ID</b>	2UMYF6K
<b>Property Type</b>	House
<b>Land Area</b>	765.1 m <sup>2</sup>

**Kylie Segedin 0417 744 317**

Licensed Real Estate Agent | [ksegedin@ljhmv.com.au](mailto:ksegedin@ljhmv.com.au)

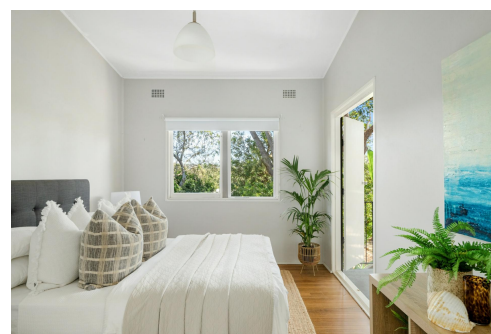
**Josephine Cowling 0419 430 766**

Licensed Real Estate Agent & Auctioneer | [jcowling@ljhmv.com.au](mailto:jcowling@ljhmv.com.au)

**LJ Hooker Mona Vale (02) 9979 8000**

3/18 Bungan Street, MONA VALE NSW 2103

[monavale.ljhooker.com.au](http://monavale.ljhooker.com.au) | [monavale@ljhmv.com.au](mailto:monavale@ljhmv.com.au)

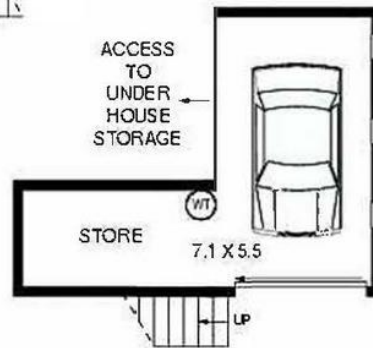


**LJ Hooker Mona Vale  
(02) 9979 8000**

**Disclaimer:** All information contained therein is gathered from relevant third parties sources. We cannot guarantee or give any warranty about the information provided. Interested parties must rely solely on their own enquiries.



ELEVATED GROUND FLOOR

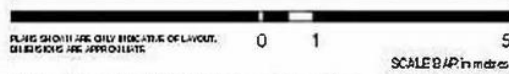


GROUND FLOOR



6 CORONATION STREET

MONA VALE



APPROX : GROSS INTERNAL AREA : 130 SQM

FLOOR PLANS ARE ONLY INDICATIVE OF LAYOUT. DIMENSIONS ARE APPROXIMATE.

*Disclaimer: The Plans and the Virtual Tour floor plans, site plans, and any other documents or information provided are for illustrative purposes only and do not constitute an offer of any real estate. The information is provided for general information only and should not be relied upon for any specific purpose. The information is provided for general information only and should not be relied upon for any specific purpose. The information is provided for general information only and should not be relied upon for any specific purpose.*

Floor Plans by Mind the Gap - Property Marketing Services  
 Ph: 1300 133 145  
 Email: enquiring@mindthegap.com.au  
 Web: www.mindthegap.com.au  
 Digital Photography - Project Marketing - Virtual Tours - Image Retouching - Floor Plans - Delivered Online



**LJ Hooker Mona Vale**  
**(02) 9979 8000**

**Disclaimer:** All information contained therein is gathered from relevant third parties sources. We cannot guarantee or give any warranty about the information provided. Interested parties must rely solely on their own enquiries.