



Mona Vale, 28 Park Street

'Dungarvon' A Charming Sandstone Cottage With Development Potential

Situated at 28 Park Street, Mona Vale this remarkable property presents a rare opportunity, boasting a desirable location, abundant space, and a range of impressive features.

With four spacious bedrooms, "Dungarvon" offers abundant living space and an elegant, functional layout ideal for families or those needing extra room for an office or creative space. Set on a generous 2033 sqm, the property features expansive outdoor areas, including a tennis court and a sparkling pool perfect to relax, play & entertain.

Not only offering an exceptional residential opportunity but also presenting as an exciting development potential. With its sizeable land parcel and desirable location, this is a rare prospect, with scope to explore the zoning for home plus business opportunity or future subdivision (STCA).

The home boasts close proximity to shops, restaurants, cafes, public transport and the golden sands of Mona Vale Beach



Disclaimer: All information contained therein is gathered from relevant third parties sources. We cannot guarantee or give any warranty about the information provided. Interested parties must rely solely on their own enquiries.

4

2

6

For Sale

Buyers Guide: \$6,500,000

View

By Appointment

Contact

Gordon Spring

0418 210 219

gspring@ljhnewport.com.au

Elizabeth Charlton

0457 177 060

lcharlton@ljhnewport.com.au

LJ Hooker Newport
(02) 9979 1111

Disclaimer:

All information contained herewith, including but not limited to the general property description, price and the address, is provided to LJ Hooker Newport by third parties. We have obtained this information from sources we believe to be reliable; however, we cannot guarantee its accuracy. The information contained herewith should not be relied upon and you should make your own enquiries and seek advice in respect of this property or any property on this website

More About this Property

Property ID	1AF6G5W
Property Type	House
Land Area	2033 m2

Gordon Spring 0418 210 219

Principal | gspring@ljhnewport.com.au

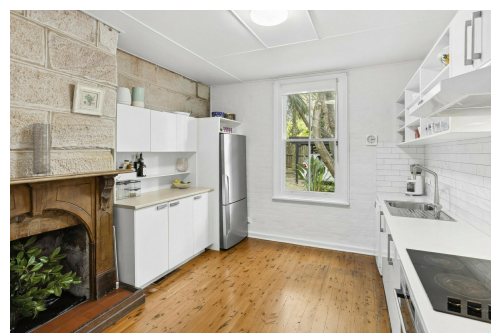
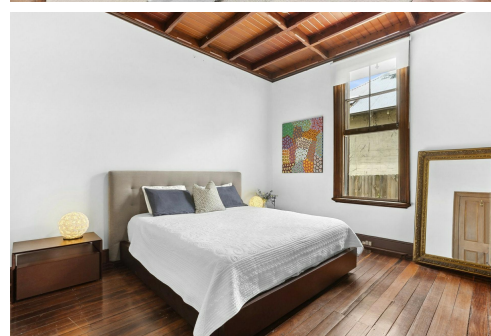
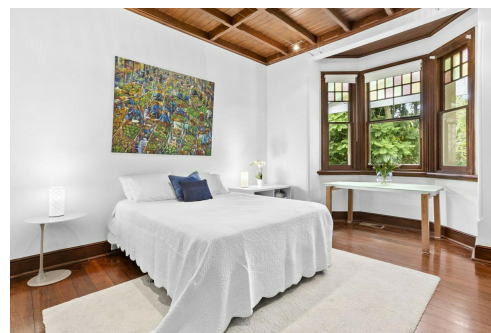
Elizabeth Charlton 0457 177 060

EA to Gordon Spring | lcharlton@ljhnewport.com.au

LJ Hooker Newport (02) 9979 1111

303 Barrenjoey Road, NEWPORT NSW 2106

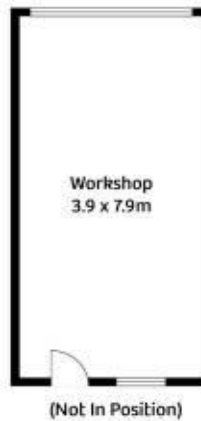
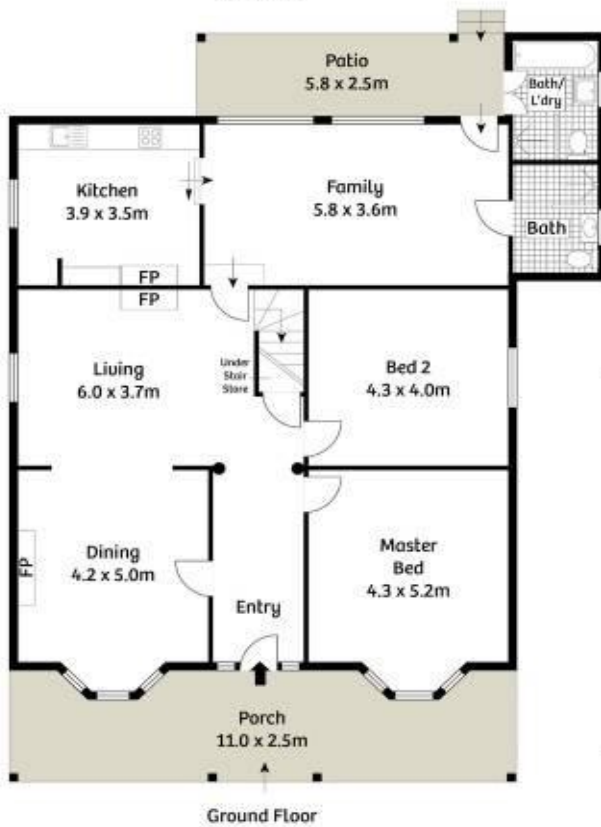
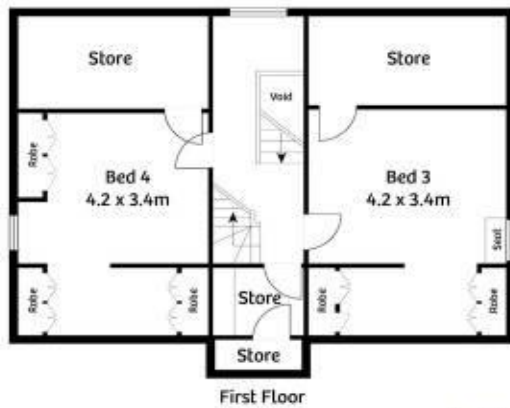
newport.ljhooker.com.au | newport@ljhnewport.com.au



Disclaimer: All information contained therein is gathered from relevant third parties sources. We cannot guarantee or give any warranty about the information provided. Interested parties must rely solely on their own enquiries.

LJ Hooker Newport
(02) 9979 1111

28 Park Street, Mona Vale



Approx. Internal Area 225sqm
Approx. Land Area 2033sqm

Whilst bwrn.com.au has made every attempt to ensure the accuracy of the floor plan contained here, measurements are approximate and no responsibility is taken for any error, omission, or mis-statement. This plan is for illustrative purposes only.



LJ Hooker Newport
(02) 9979 1111

Disclaimer: All information contained therein is gathered from relevant third parties sources. We cannot guarantee or give any warranty about the information provided. Interested parties must rely solely on their own enquiries.