

## Mona Vale, 1657 Pittwater Road

Walk to the Beach & Mona Vale Village

Large Block with DA Approved Potential for Separate 2 bedroom Accommodation

This charming and solid red-brick home offers a perfect blend of classic elegance and modern convenience. Boasting 3 spacious bedrooms it's an ideal family sanctuary with ample room to grow.

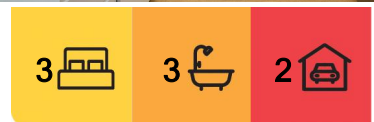
What sets this property apart is the DA-approved potential to add or construct separate accommodation —perfect for guests, extended family, or extra income potential.

The home's timeless red-brick exterior speaks to its solid construction, ensuring durability and lasting value. As you approach the entrance, you'll be captivated by the original sandstone that frames the doorway, a unique feature that enhances the character of this beautiful property.

OR



**Disclaimer:** All information contained therein is gathered from relevant third parties sources. We cannot guarantee or give any warranty about the information provided. Interested parties must rely solely on their own enquiries.



**For Sale**  
Mona Vale Classic on 1000m2 Block

**View**  
Sat 26th Apr @ 11:00AM - 11:30AM

**Contact**  
**Asha Kerr**  
0451 635 535  
akerr@ljhmv.com.au

**LJ Hooker Mona Vale**  
**(02) 9979 8000**

Take advantage of the new zoning changes for Low and Mid-rise planning to further develop the site.

Either way, you will enjoy the outdoor lifestyle with the newly built pergola, offering a fantastic space for entertaining or relaxing while taking in the surroundings. As you unwind after a day at the beach, this addition provides an idyllic setting.

With the beach and Mona Vale Village just a short stroll away, you'll be able to take advantage of the coastal lifestyle, with cafes, shops, and transport all within easy reach. This is more than just a home; it's a lifestyle.

**Key Features:**

- \*3 spacious bedrooms & 3 bathrooms
- \*DA approved potential to construct separate accommodation of 2 bedrooms
- \*Solid red-brick construction
- \*Original sandstone entrance feature
- \*Newly built pergola
- \*Walk to Mona Vale Beach & Mona Vale Village

This property offers the perfect balance of classic charm, modern potential, and unbeatable location. Don't miss the chance to secure your future in one of the most sought-after coastal communities. Contact us today to arrange your inspection!

**Disclaimer:**

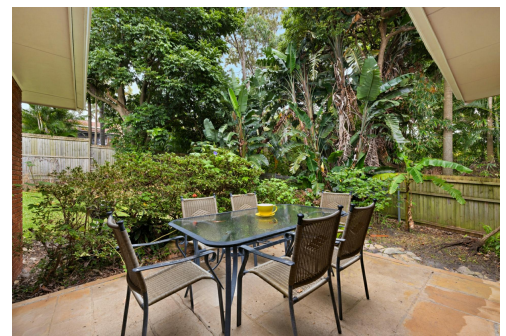
All information contained herewith, including but not limited to the general property description, price and the address, is provided to LJ Hooker Mona Vale by third parties. We have obtained this information from sources we believe to be reliable; however, we cannot guarantee its accuracy. The information contained herewith should not be relied upon and you should make your own enquiries and seek advice in respect of this property or any property on this website.

## More About this Property

<b>Property ID</b>	2VYKF6K
<b>Property Type</b>	House
<b>House Size</b>	139 m <sup>2</sup>
<b>Land Area</b>	980 m <sup>2</sup>

**Asha Kerr 0451 635 535**  
Licensed Real Estate Agent | akerr@ljhmv.com.au

**LJ Hooker Mona Vale (02) 9979 8000**  
3/18 Bungan Street, MONA VALE NSW 2103  
monavale.ljhooker.com.au | monavale@ljhmv.com.au



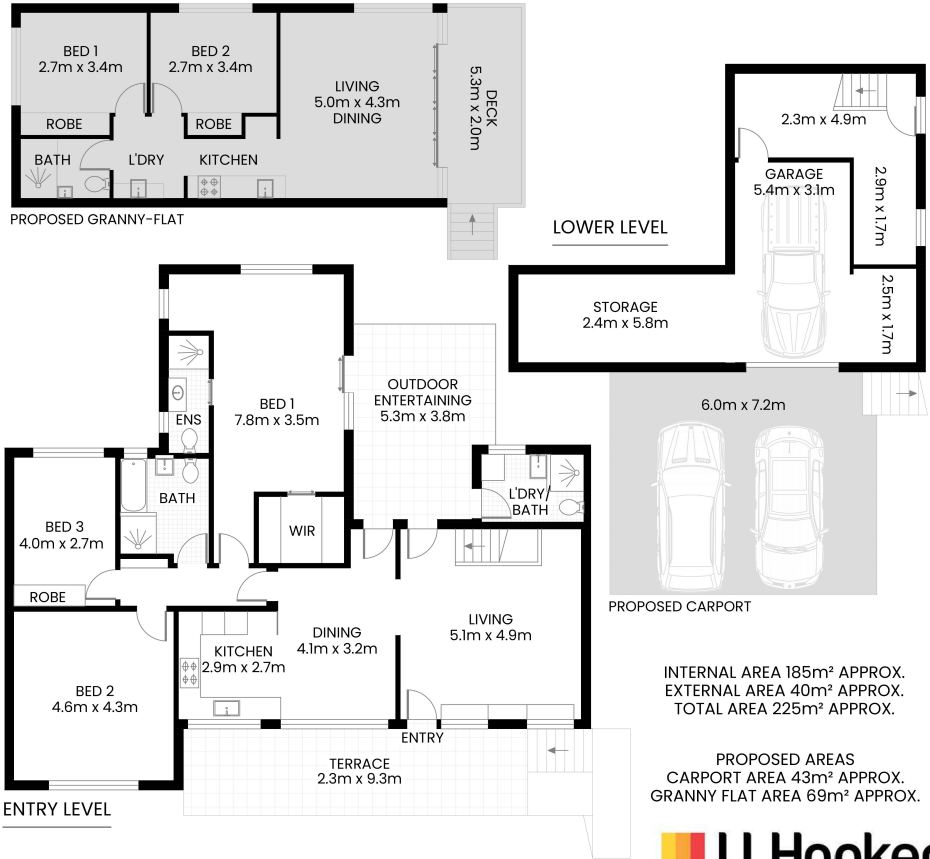
**LJ Hooker Mona Vale**  
**(02) 9979 8000**

**Disclaimer:** All information contained therein is gathered from relevant third parties sources. We cannot guarantee or give any warranty about the information provided. Interested parties must rely solely on their own enquiries.

1657 Pittwater Road  
Mona Vale



SITE PLAN



The site plan and floor plan are not to scale; measurements are indicative and in meters. Bushes and trees are placed for illustration purposes. Plans should not be relied on. Interested parties should make and rely on their own enquire. All other information provided has been collected from reliable sources but cannot be guaranteed for accuracy.