



## Mona Vale, 15 Whipbird Circuit

North Facing Flawless Modern Design - Family Entertainer  
With A Tranquil Leafy Outlook

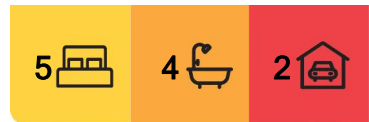
Hidden in a private, quiet circuit of Mona Vale, this architecturally designed home unfolds across three levels whilst soaking in north-facing sunlight and mesmerising leafy views. Meticulously crafted to maximise its prized aspect, the home showcases wall-to-wall bifold doors that create a seamless connection between sophisticated interiors and serene outdoor spaces. An entertainer's dream kitchen with premium Miele appliances anchors the main living area, while outside, the limestone-tiled lap pool creates a resort-style atmosphere. Premium finishes include spotted gum floors, integrated sound system, and custom cabinetry. The flowing floor plan caters perfectly to modern family life with multiple living zones, five bedrooms, and versatile spaces for work, play and relaxation.

\* Five bedrooms including luxury master suite with ensuite, walk-in robe and private balcony

\* Multiple living zones including dedicated media/rumpus room with porcelain tiles



**Disclaimer:** All information contained therein is gathered from relevant third parties sources. We cannot guarantee or give any warranty about the information provided. Interested parties must rely solely on their own enquiries.



**For Sale**  
Auction Preview

**View**  
[ljhooker.com.au/2VYBF6K](http://ljhooker.com.au/2VYBF6K)

**Contact**  
**Josephine Cowling**  
0419 430 766  
jcowling@ljhmv.com.au  
**Kylie Segedin**  
0417 744 317  
ksegedin@ljhmv.com.au

**LJ Hooker Mona Vale**  
**(02) 9979 8000**

- \* Wall-to-wall bifold doors opening to north-facing terraces and alfresco entertaining areas
- \* Gourmet entertainer's kitchen with extensive custom cabinetry, Caesarstone island bench, butler's pantry, and premium Miele appliances including integrated coffee machine, steamer and oven
- \* Limestone-tiled lap pool with sun-drenched surrounds and outdoor entertaining area
- \* Spotted gum flooring, C-Bus lighting control system, integrated zoned sound system throughout
- \* Fully ducted air conditioning, custom built-in cabinetry, Foxtel and free-to-air tv points in every room, and integrated data points in every room
- \* Double lock-up garage with additional off-street parking and abundant storage
- \* Fully fenced, sunny lawn area ideal for children and pets
- \* North-facing aspect with lush, peaceful outlooks over beautiful natural greenery
- \* Solid construction with high-end finishes including automated blinds
- \* Established landscaped, low maintenance gardens

Set in an idyllic location, this spectacular home offers the perfect balance for families — convenient access to schools, shops and commuter roads, yet embraced by the quiet privacy of a lush bushland setting. Close to Mona Vale Village, local beaches, restaurants, cafes and Pittwater. Embrace the unique combination of Northern Beaches convenience and natural tranquility...

**Disclaimer:**

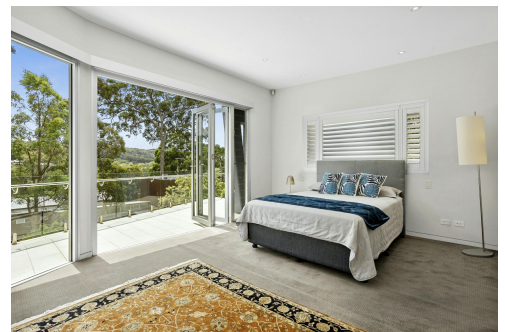
All information contained herewith, including but not limited to the general property description, price and the address, is provided to LJ Hooker Mona Vale by third parties. We have obtained this information from sources we believe to be reliable; however, we cannot guarantee its accuracy. The information contained herewith should not be relied upon and you should make your own enquiries and seek advice in respect of this property or any property on this website.

## More About this Property

<b>Property ID</b>	2VYBF6K
<b>Property Type</b>	House
<b>Land Area</b>	566.8 m2

**Josephine Cowling 0419 430 766**  
 Licensed Real Estate Agent & Auctioneer | jcowling@ljhmv.com.au  
**Kylie Segedin 0417 744 317**  
 Licensed Real Estate Agent | ksegedin@ljhmv.com.au

**LJ Hooker Mona Vale (02) 9979 8000**  
 3/18 Bungan Street, MONA VALE NSW 2103  
 monavale.ljhooker.com.au | monavale@ljhmv.com.au

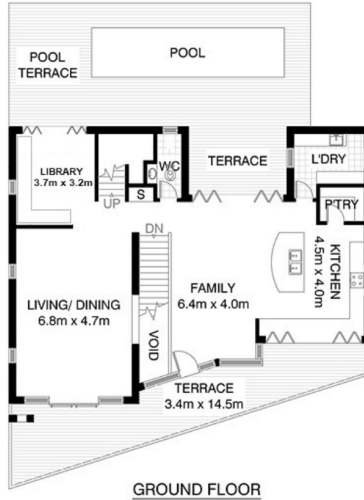
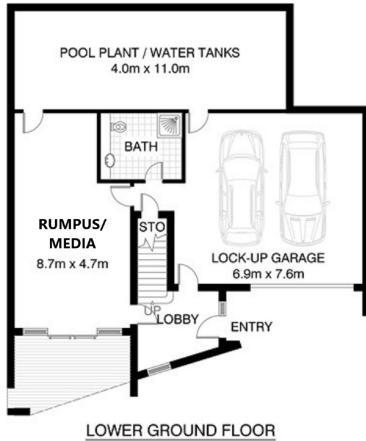
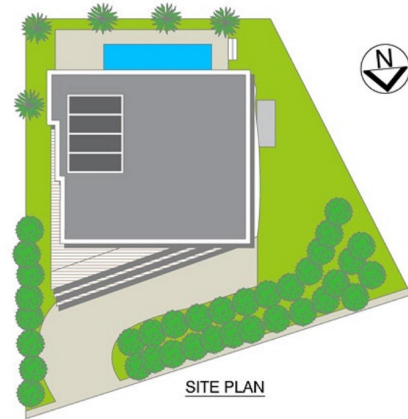


**LJ Hooker Mona Vale  
 (02) 9979 8000**

**Disclaimer:** All information contained therein is gathered from relevant third parties sources. We cannot guarantee or give any warranty about the information provided. Interested parties must rely solely on their own enquiries.

# MONA VALE 15 WHIPBIRD CIRCUIT

APPROX. INT: 419 SQM



\*PLANS SHOWN ONLY INDICATIVE OF LAYOUT. DIMENSIONS ARE APPROXIMATE.  
Floor plan supplied by V-Mark Design Pty Ltd. This floor plan is provided for indicative purposes only.  
Measurements are approximate and not to scale. The vendor, agency and supplier will accept no liability for its accuracy. Interested parties are advised to make their own independent enquiries.



**LJ Hooker Mona Vale  
(02) 9979 8000**

**Disclaimer:** All information contained therein is gathered from relevant third parties sources. We cannot guarantee or give any warranty about the information provided. Interested parties must rely solely on their own enquiries.