



Mona Vale, 3/68-70 Park Street

North Facing Gem In The Heart Of Mona Vale

An impeccable opportunity for those seeking the ideal downsizer, blending convenience, comfort, and coastal living. Located on the ground floor with lift access, this generous three bedroom apartment features a highly sought-after north-facing aspect, filling the space with natural light.

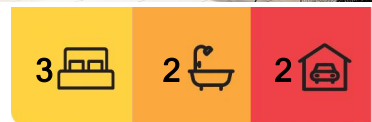
The open-plan living and dining area is designed with both style and functionality in mind, seamlessly flowing to a spacious sun-drenched balcony and private courtyard, which provide ideal outdoor living and entertaining spaces. Convenience is key with Mona Vale village a short stroll away and moments to the Golden Sands of Mona Vale Beach. An abundance of trendy cafes, restaurants and public transport routes to Sydney CBD and Palm Beach are also in close proximity.

Features Include:

- * North facing apartment with sundrenched balcony and courtyard
- * Ground floor with a lift in the block



Disclaimer: All information contained therein is gathered from relevant third parties sources. We cannot guarantee or give any warranty about the information provided. Interested parties must rely solely on their own enquiries.



For Sale
SOLD

View
ljhooker.com.au/1AMSG5W

Contact
Gordon Spring
0418 210 219
gspring@ljhnewport.com.au
Elizabeth Charlton
0457 177 060
lcharlton@ljhnewport.com.au

LJ Hooker Newport
(02) 9979 1111

- * 3 Spacious bedrooms with new plush carpet
- * Master retreat complete with a walk-in wardrobe and generous ensuite
- * Two elegant, modern bathrooms
- * Dedicated laundry with ample built-in storage
- * Double lock-up garage with internal access, providing extra convenience
- * A superb opportunity for downsizers or investors seeking modern elegance and convenience
- * Prime location close to Mona Vale Village, golf courses, cafés, and direct city bus routes

Disclaimer:

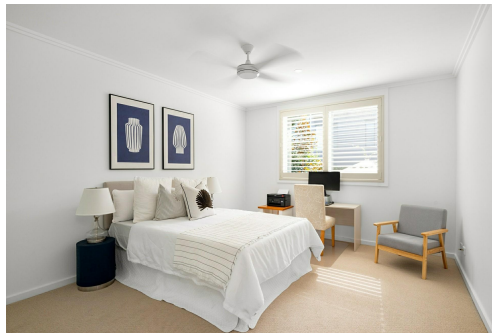
All information contained herewith, including but not limited to the general property description, price and the address, is provided to LJ Hooker Newport by third parties. We have obtained this information from sources we believe to be reliable; however, we cannot guarantee its accuracy. The information contained herewith should not be relied upon and you should make your own enquiries and seek advice in respect of this property or any property on this website.

More About this Property

Property ID	1AMSG5W
Property Type	Apartment

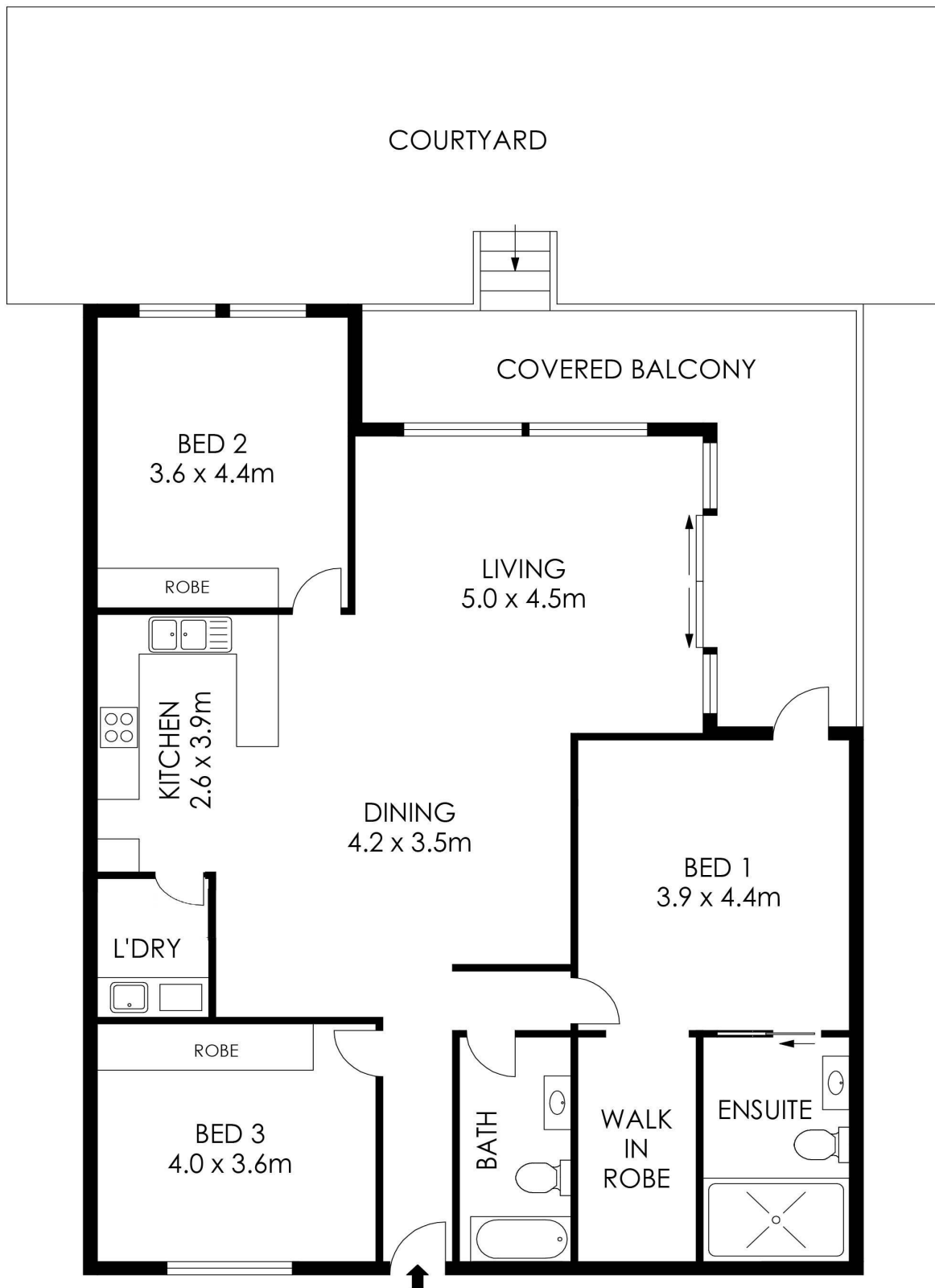
Gordon Spring 0418 210 219
Principal | gspring@ljhnewport.com.au
Elizabeth Charlton 0457 177 060
EA to Gordon Spring | lcharlton@ljhnewport.com.au

LJ Hooker Newport (02) 9979 1111
303 Barrenjoey Road, NEWPORT NSW 2106
newport.ljhooker.com.au | newport@ljhnewport.com.au



Disclaimer: All information contained therein is gathered from relevant third parties sources. We cannot guarantee or give any warranty about the information provided. Interested parties must rely solely on their own enquiries.

LJ Hooker Newport
(02) 9979 1111



APPROX. INTERNAL AREA = 133 m²
 APPROX. EXTERNAL AREA = 124 m²
 TOTAL = 257m²

PLANS SHOWN ONLY INDICATIVE OF LAYOUT. DIMENSIONS ARE APPROXIMATE.



3/68 Park Street, Mona Vale

LJ Hooker

LJ Hooker

LJ Hooker Newport
 (02) 9979 1111

Disclaimer: All information contained therein is gathered from relevant third parties sources.
 We cannot guarantee or give any warranty about the information provided. Interested parties must rely solely on their own enquiries.