

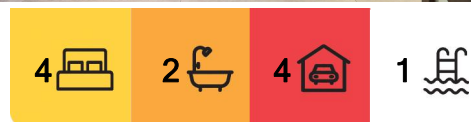
Molendinar, 16 Tasman Avenue

Find Your Haven on Tasman

Welcome to 16 Tasman Drive, Molendinar-a stunning family home that perfectly blends luxury, comfort, and functionality. Nestled in a sought-after neighborhood, this impressive property offers an array of exceptional features, making it an ideal choice for those seeking an elevated lifestyle.

Upon entering, you are greeted by an open foyer, which provides a welcoming entry into the expansive parents' retreat on the ground level. This true sanctuary features an exquisite ensuite with double vanity and a double shower, offering a spa-like experience right at home. Adjacent to the retreat is a spacious gym area, perfect for fitness enthusiasts who value convenience. The spacious double garage provides ample room for vehicles, storage, and workspace.

Outside, a pristine, crystal-clear pool awaits, offering a refreshing escape during hot summer days, surrounded by lush landscaping. For sports lovers, the private basketball



For Sale

Offers over \$1,299,000

View

By Appointment

Contact

Ben Latimer

0402 921 314

blatimer.southport@ljhooker.com.au

Alex McCormack

0411 510 099

amccormack.southport@ljhooker.com.au



Disclaimer: All information contained therein is gathered from relevant third parties sources.

We cannot guarantee or give any warranty about the information provided. Interested parties must rely solely on their own enquiries.

LJ Hooker Southport
(07) 5591 5222

half court is an excellent addition, providing endless fun and exercise opportunities. This oasis is perfect for refreshing swims, poolside lounging, and hosting elegant outdoor gatherings.

Upstairs houses three generously sized bedrooms, each designed for comfort and style. A well-appointed bathroom serves the upstairs bedrooms, featuring modern fixtures and finishes. The heart of the home is the modern kitchen, boasting an island and equipped with high-quality appliances, ample storage, and plenty of counter space, making meal preparation a delight. Adjacent to the kitchen, the dining and family area provides a welcoming space for daily meals and casual gatherings. The large living area offers a versatile space for relaxation and entertainment, designed to accommodate various furniture layouts and personal touches.

Located in the vibrant community of Molendinar, this home is close to local amenities, schools, parks, and major transport routes, ensuring easy access to everything you need. 16 Tasman Drive is not just a house; it's a home that offers a lifestyle of luxury and convenience. Whether you're enjoying a peaceful evening by the pool, hosting a barbecue in the outdoor entertainment areas, or spending quality time with family in the spacious living areas, this property caters to all your needs.

Don't miss the opportunity to make this exquisite property your own. Experience the perfect blend of elegance and comfort at 16 Tasman Drive, Molendinar. Contact Ben today to arrange a viewing and see firsthand all that this remarkable home has to offer.

Featuring:

- 4 large bedrooms
- 2 bathrooms and 1 powder room
- Kitchen with island benchtop
- Double garage with shaded carport
- Gym area
- Separate laundry
- Split level entertainment areas
- Large pool
- Basketball half court
- Carpet throughout bedrooms
- Feature walls in bedrooms
- Fans throughout

Key financial Information:

Water - \$1,900 per year approx

Council - \$2,000 per year approx

Rental appraisal - \$1,200 to \$1,300 per week approx

Disclaimer: We have in preparing this information used our best endeavors to ensure that the information contained herein is true and accurate. Prospective buyers should make their own enquiries to satisfy themselves as to its accuracy. Although high standards have been used in the preparation of this document, no legal responsibility can be accepted by LJ Hooker Southport or any loss or damage resulting from the content or the use of this information. Any photographs show only certain parts of the property as it appeared at the



LJ Hooker Southport
(07) 5591 5222

Disclaimer: All information contained therein is gathered from relevant third parties sources. We cannot guarantee or give any warranty about the information provided. Interested parties must rely solely on their own enquiries.

time they were taken. Areas, amounts, measurements, distances, and all other numerical information is approximate only.

More About this Property

Property ID	ZH3F4K
Property Type	House
Including	Air Conditioning Pool Balcony Deck Gym Dishwasher Built-in-Robes

Ben Latimer 0402 921 314

Sales Consultant/Director | blatimer.southport@ljhooker.com.au

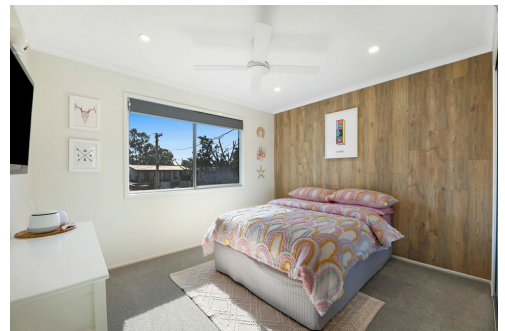
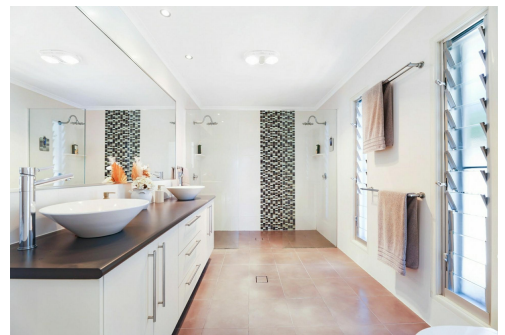
Alex McCormack 0411 510 099

Principal/Licensee | amccormack.southport@ljhooker.com.au

LJ Hooker Southport (07) 5591 5222

2308-2309 Level 3 Southport Central, Tower 2, 5 Lawson Street, SOUTHPORT
QLD 4215

southport.ljhooker.com.au | southport@ljhooker.com.au



Disclaimer: All information contained therein is gathered from relevant third parties sources.
We cannot guarantee or give any warranty about the information provided. Interested parties must rely solely on their own enquiries.

LJ Hooker Southport
(07) 5591 5222



16 Tasman Avenue MOLENDINAR

738m²

4 Bed + Gym

2 Bath + Powder

2 Car + Shade Sail

Internal 272m² | Balcony, Deck & Patio 73m² | Total 345m²

LJ Hooker

Ben Latimer 0402 921 314 | Alex McCormack 0411 510 099

This is not a legal document therefore all measurements and information provided is subject to survey. No permission is given to use or alter this Floor Plan without the consent of Pure Design Concepts. The overall presentation style, layout, imagery, fonts, background, colours and terminology has been originally created by PDC and is subject to strict copyright. No ownership is taken of building design. Find out more at puredesignconcepts.com.au

pdc.

LJ Hooker

LJ Hooker Southport
(07) 5591 5222

Disclaimer: All information contained therein is gathered from relevant third parties sources. We cannot guarantee or give any warranty about the information provided. Interested parties must rely solely on their own enquiries.