



5/14 Carty Avenue, Modbury

3  2  1 

Coming Soon - Brand New Torrens Title Homes - House & Land Package Fixed Price

First Home Owners Grant* is available, please refer to the Revenue SA website for eligibility criteria and further information.

You'll love the easy access to Tea Tree Plaza which offers many department store options, as well as boutique shops and cafes to try. Modbury Hospital is close by, ideal for students or workers.

- The First Home Owner's Grant is offered by RevenueSA and is subject to eligibility criteria as determined by RevenueSA. Prospective purchasers must make their own enquiries. The vendor and the agent make no representation in relation to the Property or Purchaser's eligibility to obtain the grant.

Note: All render images are artistic impressions only which may not represent the exact completed product. The selections shown are for illustrative purposes only and may differ to the final product. Purchasers are to make their own enquiries regarding the inclusions and specifications for each dwelling.

All information provided including, but not limited to, the property's

All information contained therein is gathered from relevant third parties sources. We cannot guarantee or give any warranty about the information provided. Interested parties must rely solely on their own enquiries.

FOR SALE
Contact Agent

AGENTS

Lisa Xu
0432 235 818
lisax@ljmw.com.au

AGENCY

LJ Hooker Mile End | Woodville
(08) 8352 7111

 **LJ Hooker**

land size, floorplan, floor size, building age and general property description has been obtained from sources deemed reliable. However, the agent and the vendor cannot guarantee the information is accurate and the agent, and the vendor, does not accept any liability for any errors or oversights. Interested parties should make their own independent enquiries and obtain their own advice regarding the property. Should this property be scheduled for Auction, the Vendor's Statement will be available for perusal by members of the public 3 business days prior to the Auction at the offices of LJ Hooker Mile End at 206a Henley Beach Road, Torrensville and for 30 minutes prior to the Auction at the place which the Auction will be conducted. RLA 242629 less

MORE DETAILS

Property ID	XY3HDM
Property Type	House
Including	Ensuite Air Conditioning Alarm Built-in-Robes Carpeted Close to Schools Close to Shops Close to Transport Heating

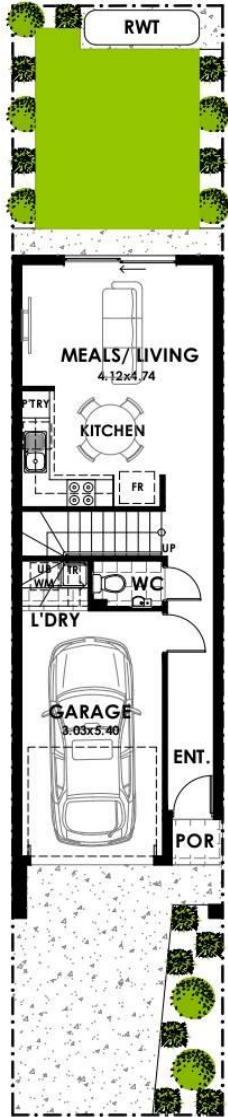
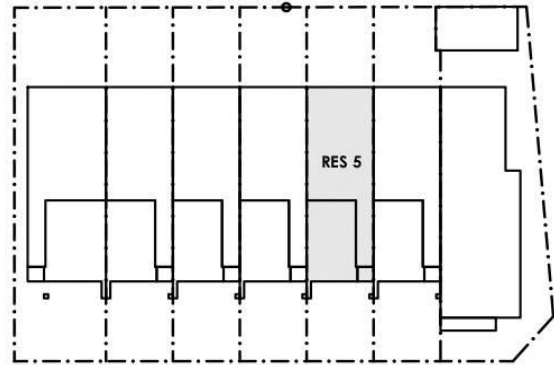


Lisa Xu 0432 235 818
Sales Executive | lisax@ljmw.com.au

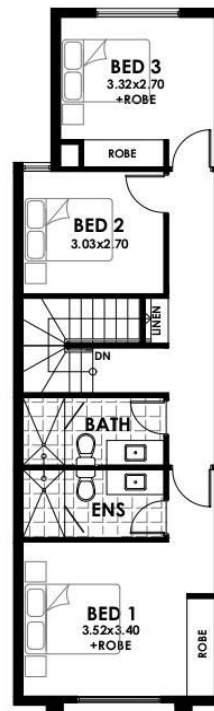
LJ Hooker Mile End | Woodville (08) 8352 7111
206A Henley Beach Road, TORRENSVILLE SA 5031
mileendwoodville.ljhooker.com.au | admin@ljhookermileend.com.au

RESIDENCE 5

AREAS	m ²
LOWER LIVING	39.55
UPPER LIVING	66.30
GARAGE	18.92
PORCH	1.10
TOTAL	125.87



GROUND FLOOR PLAN



FIRST FLOOR PLAN



Lofty
building group

All information contained therein is gathered from relevant third parties sources. We cannot guarantee or give any warranty about the information provided. Interested parties must rely solely on their own enquiries.

LJ Hooker