



Moama, 6 Dhala Place

Quiet Court Location

Situated in a peaceful court, this beautifully maintained home offers 3 spacious bedrooms, 2 bathrooms and a double garage remotely controlled and an outdoor alfresco area.

The generous master bedroom has a lovely en-suite plus a WIR and the remaining 2 bedrooms have built in robes serviced by a lovely family bathroom.

The property features a large side access ideal for additional parking for a caravan and boat.

Conveniently located close to schools, shops, clubs, walking trails, parks, public transport and all the amenities that Moama has to offer.

This home is perfect for families or professionals seeking comfort and convenience in an excellent location.



Disclaimer: All information contained therein is gathered from relevant third parties sources. We cannot guarantee or give any warranty about the information provided. Interested parties must rely solely on their own enquiries.



For Sale
Please Call

View
ljhooker.com.au/RX2FBW

Contact
Wayne Rees
0499 355 105
wayne.rees@ljhooker.com.au
Allison Minter
0419 593 801
allison.minter@ljhooker.com.au

LJ Hooker Echuca
(03) 5480 6922

This is a must see as inspection will please genuine buyers.

More About this Property

Property ID	RX2FBW
Property Type	House
Land Area	536 m2
Including	Ensuite Toilets (2)

Wayne Rees 0499 355 105

Sales Consultant | wayne.rees@ljhooker.com.au

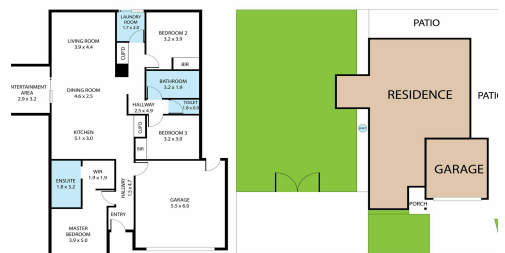
Allison Minter 0419 593 801

Principal | allison.minter@ljhooker.com.au

LJ Hooker Echuca (03) 5480 6922

1/249 Anstruther Street, ECHUCA VIC 3564

echuca.ljhooker.com.au | echuca@ljhooker.com.au



LJ Hooker Echuca
(03) 5480 6922

Disclaimer: All information contained therein is gathered from relevant third parties sources. We cannot guarantee or give any warranty about the information provided. Interested parties must rely solely on their own enquiries.