

306/16 Blackwood Street, Mitchelton

TOP FLOOR & PERFECTLY POSITIONED!

Auction Location: On Site



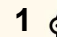
Move in ready, there is nothing left for you to do but enjoy the lifestyle offered by this brilliant apartment! Ideally positioned the apartment provides you with the convenience of public transport connectivity and a plethora of greenspaces on your doorstep.

The air-conditioned living area flows to the kitchen complete with dishwasher and stone benchtops. Your private alfresco provides an outdoor entertaining option with stunning views and soaring ceilings. The complex also offers secure allocated garage parking.

FEATURES:

- Built in 2011
- Open-plan lounge/dining area with ceiling fan and air-conditioning.
- Modern kitchen with dishwasher and stone benchtops.
- Bedroom with ceiling fan
- Built in wardrobe
- Allocated Secure Car Parking Space
- Potential rental \$420-\$450pw

Perfectly positioned in the heart of Mitchelton, minutes from a

1  1  1 

AUCTION

Sat 20th Jun @ 12:30PM

VIEW

Sat 20th Jun @ 12:00PM - 12:30PM

AGENTS

Richard Mirosch
0414 512 776
richard.mirosch@ljhooker.com.au

Lucy West
0422 175 322
lucy.west@ljhooker.com.au

AGENCY

LJ Hooker Stafford
(07) 3357 1888

All information contained therein is gathered from relevant third parties sources. We cannot guarantee or give any warranty about the information provided. Interested parties must rely solely on their own enquiries.



number of cafes, Brookside Shopping Centre and the Station. With a range of parks nearby this is a fantastic set and forget investment or ideal first home at only 10km to the City.

MORE DETAILS

Property ID	1F1FF4N
Property Type	Apartment
Including	Balcony

Richard Mirosch 0414 512 776

Principal | richard.mirosch@ljhooker.com.au

Lucy West 0422 175 322

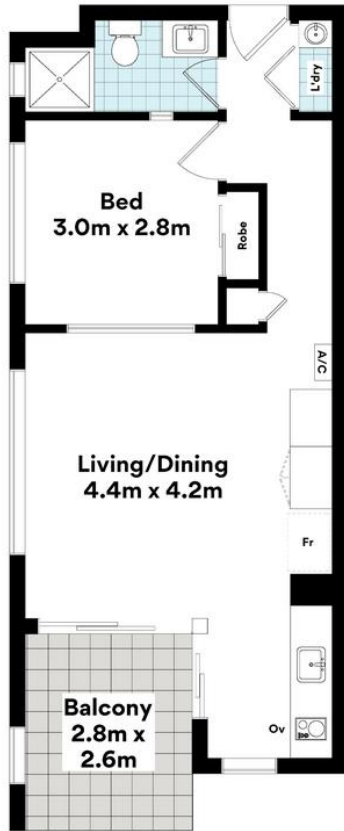
Sales & Marketing Consultant | lucy.west@ljhooker.com.au

LJ Hooker Stafford (07) 3357 1888

205 Stafford Road, STAFFORD QLD 4053

stafford.ljhooker.com.au | stafford@ljhooker.com.au





**306/16 Blackwood St,
Mitchelton**



FLOOR AREA SIZES

Internal	47.5m ²
External	6.7m ²
Car Space	13.1m ²
TOTAL	67.3m²

Whilst every attempt has been made to ensure the accuracy of the floor plans contained here, measurements of doors, windows, rooms and any other items are approximate and no responsibility is taken for any error, omission or misstatement.

These plans are for representation purposes only. Provided by primopixels.com.au