



Mitchell Park, 12 Peterson Avenue

Renovate, Rebuild or Redevelop

Auction Location: on site

"UNDER INSTRUCTIONS FROM THE PUBLIC TRUSTEE"

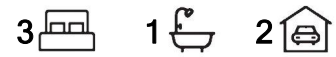
Just over 18m frontage and zoned General Neighbourhood, 12 Peterson Avenue presents a number of opportunities to add some serious value.

Currently disposed of a 3 bedrooms, 60s built home in need of some tender love and care, consider renovating and extending into the deep rear yard, knocking it over and building the family home or explore subdivision potential (STCC).

Minutes away from all your shopping needs, eateries and public transport. Ten minutes from the sea and an easy commute to the CBD. Bucket loads of opportunity waiting to be unlocked right here.



Disclaimer: All information contained therein is gathered from relevant third parties sources. We cannot guarantee or give any warranty about the information provided. Interested parties must rely solely on their own enquiries.



For Sale

Sold by Nick Ploubidis, LJ Hooker Kensington|Unley

View

ljhooker.com.au/618WFDJ

Contact

Nick Ploubidis

0423 840 514

nploubidis@ljhkensingtonunley.com.au

LJ Hooker Kensington | Unley
(08) 8431 6088

AUCTION: Friday 16 May at 11:30am, on site.

(\$730,000)

CT: Volume 5492 Folio 162

Council: City of Marion

Council Rates: \$1,680.05 per annum (approx)

Water Rates: \$181.23 per quarter (approx)

Land Size: 613 square metres (approx)

Year Built: 1965 (approx)

The Vendor's Statement (Form 1) will be available for perusal by members of the public:-

(A) at the office of the agent for at least 3 consecutive business days immediately preceding the auction; and

(B) at the place at which the auction is to be conducted for at least 30 minutes immediately before the auction commences.

More About this Property

Property ID	618WFDJ
Property Type	House
House Size	236 m2
Land Area	613 m2

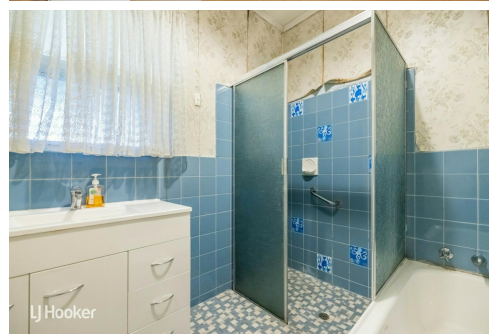
Nick Ploubidis 0423 840 514

Principal | Auctioneer | nploubidis@ljhkensingtonunley.com.au

LJ Hooker Kensington | Unley (08) 8431 6088

295 Kensington Road, KENSINGTON PARK SA 5068

kensingtonunley.ljhooker.com.au | reception@ljhkensingtonunley.com.au



Disclaimer: All information contained therein is gathered from relevant third parties sources.

We cannot guarantee or give any warranty about the information provided. Interested parties must rely solely on their own enquiries.

**LJ Hooker Kensington | Unley
(08) 8431 6088**



Scale in metres. This drawing is for illustration purposes only. All measurements are approximate and details intended to be relied upon should be independently verified.

Produced by The Fotobase Group