

34 Park View Road, Minden

Make this unfinished renovation your next project —Minden on approx 5,417sqm

Circumstances have changes for the current owner so this renovation has not been completed. When the current owner made his purchase the home did have active termites but these are now treated and the extent of the repairs required is now exposed. You will be able to see the vision. Put your work boots on and round up your tools! This 3 bedroom hardiplank home needs some love.

If you want to get your foot into the real estate market then opportunities don't arise often at this piece tag. Let your mind run wild with what you can create. The block has beautiful established trees including lots of fruit trees. With heaps of privacy and over 5,000sqm there is plenty of room for pets, kids to play and for a shed.

To inspect call Janette Lewis on 0407 144 403 to book a ti

3 🏠 1 🚿 1 🚗

FOR SALE

Please Call

AGENTS

Janette Lewis
0407 144 403
jlewis@ljhplainland.com.au

AGENCY

LJ Hooker Plainland | Laidley
(07) 5411 4960

MORE DETAILS

Property ID HH0HBC
Property Type House
Land Area 5417 m2

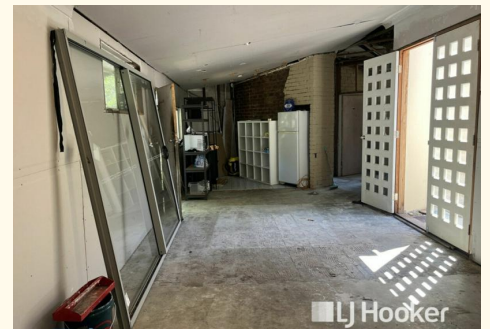
Janette Lewis 0407 144 403

Sales Consultant | jlewis@ljhplainland.com.au

LJ Hooker Plainland | Laidley (07) 5411 4960

Shop 1/16 Gehrke Road, PLAINLAND QLD 4341

laidley.ljhooker.com.au | plainland@ljhplainland.com.au



All information contained therein is gathered from relevant third parties sources.
We cannot guarantee or give any warranty about the information provided.
Interested parties must rely solely on their own enquiries.