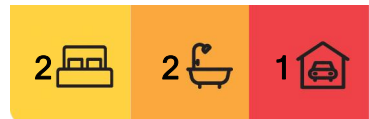




Milton, 104/25 Walsh Street

RARE COURTYARD UNIT IN THE HEART OF MILTON!



Positioned in the heart of Milton, this two-bedroom, two-bathroom residence offers a unique blend of refined interiors and exceptional outdoor space-an uncommon find in inner-city living. Designed for those who value both style and functionality, this home presents a seamless indoor-outdoor lifestyle.

For Sale
OPEN TO OFFERS

View
ljhooker.com.au/1DK9F4N

The open-plan living, dining, and kitchen area is thoughtfully designed, featuring high-end fixtures and fittings throughout. The kitchen boasts sleek cabinetry, premium appliances, and ample storage, catering to both everyday living and entertaining.

Contact
Harry Harris
harry.harris@ljhooker.com.au
Dean Hamilton
0400 799 447
dean.hamilton@ljhooker.com.au

What truly sets this property apart is its expansive terrace and additional garden space. This generous outdoor area provides a private sanctuary, perfect for alfresco dining, gardening, or simply unwinding amidst lush greenery-a rare luxury in the urban landscape.

Both bedrooms are well-proportioned, with the primary suite offering a private ensuite and



LJ Hooker Stafford
(07) 3357 1888

Disclaimer: All information contained therein is gathered from relevant third parties sources. We cannot guarantee or give any warranty about the information provided. Interested parties must rely solely on their own enquiries.

direct access to the terrace, enhancing the connection to the outdoors. The second bathroom is equally well-appointed, maintaining the home's commitment to quality and comfort.

Located within walking distance to local cafes, shops, and public transport, 104/25 Walsh Street offers a harmonious balance of urban convenience and tranquil living. This residence is ideal for professionals, downsizers, or anyone seeking a distinctive home in a vibrant community.

FEATURES:

- + Expansive wrap-around terrace, providing the best in indoor/outdoor living.
- + Extremely rare courtyard area that is surrounded by greenery, truly a unique feature that is seldom found anywhere else within the inner-city.
- + High-end kitchen with stainless steel appliances, stone countertops, and ample storage throughout.
- + Modern bathrooms with floor-to-ceiling tiles, and high-end fixtures & fittings.
- + Generous primary with a walk-through robe and high-end en-suite.
- + Spacious open plan living and dining area that effortlessly leads to the rear terrace.
- + Carpeted and tiled flooring throughout the home.
- + Ceiling fans and split-system A/C throughout.
- + Electric multi-use car charger within the secure parking space - another truly unique feature.
- + Conveniently placed internal laundry.
- + Only 290m from Milton Station.
- + Only 800m from Milton Ferry Terminal.
- + Situated only minutes away from an array of shopping and nightlife venues, it's truly a location with no compromise.
- + Admin, Sinking Fund, and Insurance contributions totaling \$7,266.00 P.A
- + Sinking fund balance totaling \$159,494.27 as at 31/05/2025.

A property of this calibre will not last long in today's market, call Harry & Dean today for the sales report and rental appraisal!

More About this Property

Property ID	1DK9F4N
Property Type	Apartment
House Size	161 m2
Including	Air Conditioning Courtyard Balcony Dishwasher Outdoor Entertaining Built-in-Robes Fully Fenced

Harry Harris

Sales Associate to Dean Hamilton | harry.harris@ljhooker.com.au

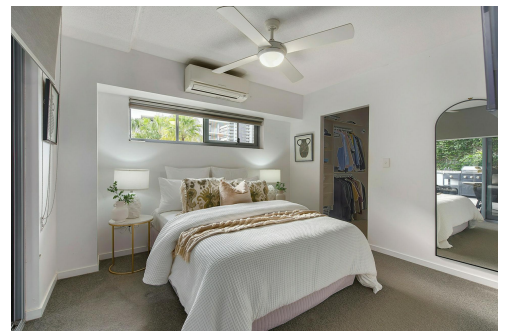
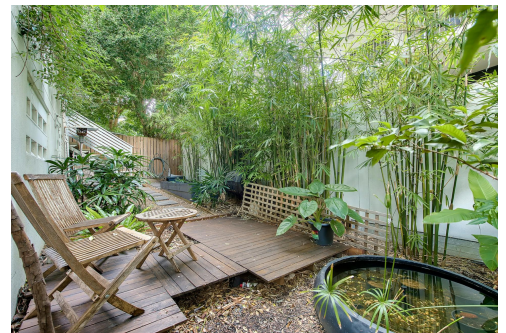
Dean Hamilton 0400 799 447

Independent Contractor - Dean H Pty Ltd | dean.hamilton@ljhooker.com.au

LJ Hooker Stafford (07) 3357 1888

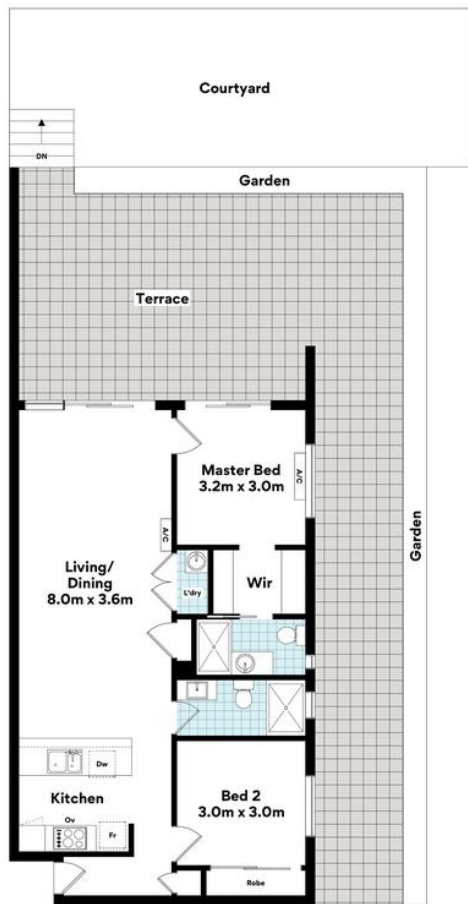
205 Stafford Road, STAFFORD QLD 4053

stafford.ljhooker.com.au | stafford@ljhooker.com.au



LJ Hooker Stafford
(07) 3357 1888

Disclaimer: All information contained therein is gathered from relevant third parties sources. We cannot guarantee or give any warranty about the information provided. Interested parties must rely solely on their own enquiries.



104/25 Walsh St,
Milton



FLOOR AREA SIZES

Internal	80.3m ²
External	65.8m ²
Car Space	14.6m ²
TOTAL	160.7m²

Whilst every attempt has been made to ensure the accuracy of the floor plans contained here, measurements of doors, windows, rooms and any other items are approximate and no responsibility is taken for any error, omission or misstatement. These plans are for representation purposes only. Provided by primapixel.com.au