



Milton, 44 Constitution Avenue

A Brand New Quality Build Throughout!!!

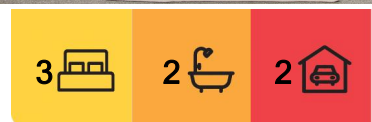
My vendor, being a builder, loves building quality homes with design focusing on big bedrooms, lots of storage, spacious living areas and unique features. Located in Milton's new subdivision, that has a rural backdrop, this home will impress you from the onset with its brick, stained timber frontage and covered patio area. Upon entering the "wow factor" hits you, the designer kitchen is a centre piece marrying functionality with aesthetic appeal.

The extra height in the ceiling gives you a grandeur of space and the open plan living with its heat pump is perfect to relax in while you enjoy those rural views, or you could appreciate them from the patio via the sliding doors. The nearby master bedroom is a great size, its walk-in wardrobe and the tiled ensuite with a bath are a touch of luxury. In a separate wing is the extra two bedrooms, another tiled family bathroom and separate toilet... perfect to close off when its not in use.

Discover the double garage, lined walls with customwood for strength and a great attic



Disclaimer: All information contained therein is gathered from relevant third parties sources. We cannot guarantee or give any warranty about the information provided. Interested parties must rely solely on their own enquiries.



For Sale
Negotiation

View
By Appointment

Contact
Paul Anderton
0273 413 733
paul@ljhmosgiel.co.nz
Caitlin Anderton
021 0823 2583
caitlin@ljhmosgiel.co.nz.

LJ Hooker Mosgiel
(03) 489 6800
Wayne Graham Realty Ltd

storage area above, via the ladder, for additional space for your belongings. The laundry is off the garage, so space isn't compromised, 100% wool carpet, and the homes having neutral toning's throughout makes it easy to suit your furniture.

Outside is a blank canvas ready for those green fingered gardeners to put your own touch on this lovely home. Only a short drive to neighbouring towns and Dunedin city, this home with all it offers has to be seriously considered.

Please note that the grass in some photos has been enhanced.

More About this Property

Property ID	6T0GEX
Property Type	House
House Size	191 m ²
Land Area	579 m ²
Licensed Real Estate Agents (REAA2008)	

Paul Anderton 0273 413 733

Licensee | paul@ljhmosgiel.co.nz

Caitlin Anderton 021 0823 2583

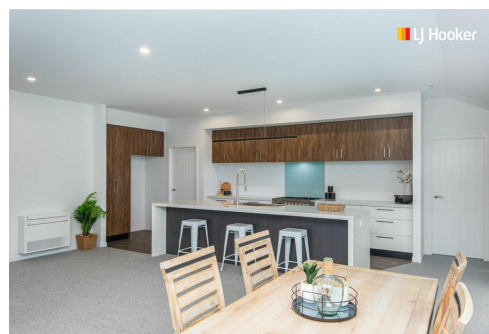
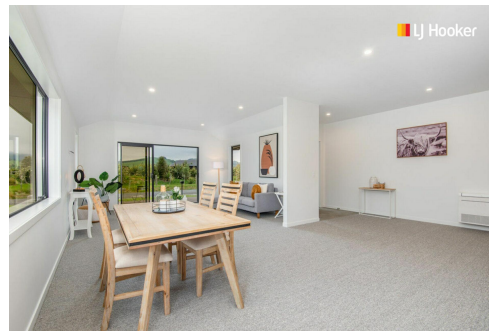
Licensee | caitlin@ljhmosgiel.co.nz.

LJ Hooker Mosgiel (03) 489 6800

Wayne Graham Realty Ltd

9 Factory Road, MOSGIEL 9024

mosgiel.ljhooker.co.nz | mosgiel@ljhmosgiel.co.nz



Disclaimer: All information contained therein is gathered from relevant third parties sources. We cannot guarantee or give any warranty about the information provided. Interested parties must rely solely on their own enquiries.

LJ Hooker Mosgiel
(03) 489 6800
Wayne Graham Realty Ltd